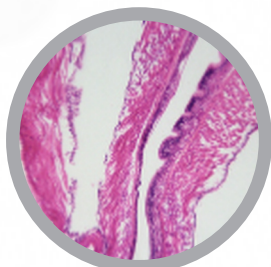


ZOOLOGY SLIDE SETS

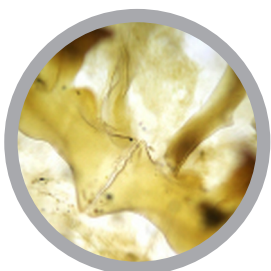
Cat #: CH-ZO1 - ZOOLOGY - PORIFERA, COELENTERATA AND ECHINODERMATA SLIDE SET - 28 slides



- 1 - Freshwater spongia w.m.
- 2 - Spicule of Spongia (calcium) w.m.
- 3 - Spicule of Spongia (silica) w.m.
- 4 - Hydra w.m.
- 5 - Hydra with bud w.m.
- 6 - Hydra t.s.
- 7 - Hydra l.s.
- 8 - Hydra through testes t.s.
- 9 - Hydra through ovary t.s.
- 10 - Nerve net of Hydra w.m.
- 11 - Hydra through bud l.s.
- 12 - Hydra through food in cavity l.s.
- 13 - Hydra with food in cavity w.m.
- 14 - Hydra through ovary & testes t.s.
- 15 - Hydra catch food l.s.
- 16 - Starfish through papula t.s.
- 17 - Body wall of Starfish t.s.
- 18 - Arm of starfish (show nerve) t.s.
- 19 - Starfish through central disc and arm l.s.
- 20 - Eggs of Sea urchin w.m.
- 21 - 2-cell stage of egg of Sea urchin w.m.
- 22 - 4-cell stage of egg of Sea urchin w.m.
- 23 - 8-cell stage of egg of Sea urchin w.m.
- 24 - 16-cell stage of egg of Sea urchin w.m.
- 25 - 32-cell stage of egg of Sea urchin w.m.
- 26 - Blastula stage of egg of Sea urchin w.m.
- 27 - Gastrula of egg of Sea urchin w.m.
- 28 - Cleavage stage of egg of Sea urchin w.m.

For slide set prices see [page 40](#). If you are interested in purchasing individual slides [CLICK HERE](#)

Cat #: CH-ZO2 - ZOOLOGY - ARTHROPODA SLIDE SET - 25 slides



- 1 - Larva of trombididae w.m.
- 2 - Adult of trombididae w.m.
- 3 - Larva of gamasidae w.m.
- 4 - Adult of gamasidae mite w.m.
- 5 - Adult of Dermatophagoides farinae w.m.
- 6 - Mouthpart of acanthosomatidae w.m.
- 7 - Macrosiphum avenae w.m.
- 8 - Chewing mouthpart of grasshopper w.m.
- 9 - Jumping leg of grasshopper w.m.
- 10 - Coriaceous wing of grasshopper w.m.
- 11 - Filiform antenna of grasshopper w.m.
- 12 - Malpighian tube of grasshopper w.m.
- 13 - Genitalia of grasshopper w.m.
- 14 - Dorsal vessel of grasshopper t.s.
- 15 - Central nerve cord of grasshopper l.s.
- 16 - Oesophagus of grasshopper t.s.
- 17 - Crop of grasshopper t.s.
- 18 - Proventriculus of grasshopper t.s.
- 19 - Mid gut of grasshopper t.s.
- 20 - Hind gut of grasshopper t.s.
- 21 - Testis of grasshopper l.s.
- 22 - Gizzard of cricket t.s.
- 23 - Front Legs of cricket w.m.
- 24 - Digging leg of mole cricket w.m.
- 25 - Mouthpart of cricket w.m.

Cat #: CH-ZO3 - ZOOLOGY - DIPTERA SLIDE SET - 43 slides

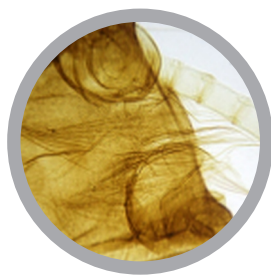


- 1 - Eggs of anopheles w.m.
- 2 - Eggs of culex w.m.
- 3 - Eggs of aedes w.m.
- 4 - Pupa of anopheles w.m.
- 5 - Pupa of culex w.m.
- 6 - Pupa of aedes w.m.
- 7 - Larva of anopheles w.m.
- 8 - Larva of culex w.m.
- 9 - Larva of aedes w.m.
- 10 - Mouthpart of female anopheles w.m.
- 11 - Mouthpart of male anopheles w.m.
- 12 - Mouthpart of female culex w.m.
- 13 - Mouthpart of male culex w.m.
- 14 - Mouthpart of female aedes w.m.
- 15 - Mouthpart of male aedes w.m.
- 16 - Male and female anopheles w.m.
- 17 - Male and female culex w.m.
- 18 - Male and female aedes w.m.

- 19 - Mouthpart of musca domestica w.m.
- 20 - Maggot w.m.
- 21 - Adult of female phlebotomus w.m.
- 22 - Adult of male phlebotomus w.m.
- 23 - Mouthparts of culex (female and male) w.m.
- 24 - Mouthparts of china anopheles (female and male) w.m.
- 25 - Antenna of china anopheles (female and male) w.m.
- 26 - Eggs of musca domestica w.m.
- 27 - Pupa of musca domestica w.m.
- 28 - Sitodiplosis mosellana w.m.
- 29 - Piercing-sucking mouthpart of mosquito w.m.
- 30 - Siphoning mouthpart of musca domestica w.m.
- 31 - Pseudohalteres of musca domestica w.m.
- 32 - Aristate antenna of musca domestica w.m.
- 33 - Whorled antenna of male mosquito w.m.
- 34 - Wings of drosophila w.m.
- 35 - Incomplete wings of drosophila w.m.
- 36 - Drosophila melanogaster w.m. female
- 37 - Drosophila melanogaster w.m. male
- 38 - Eggs of drosophila melanogaster w.m.
- 39 - Legs of musca domestica w.m.
- 40 - Wings of musca domestica w.m.
- 41 - Wing of culex w.m.
- 42 - Larva of chironomus w.m.
- 43 - Compound eye of musca domestica w.m.

For slide set prices see [page 40](#). If you are interested in purchasing individual slides [CLICK HERE](#)

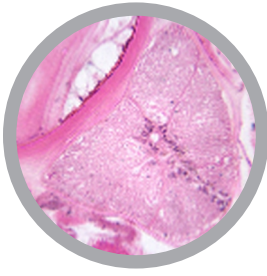
Cat #: CH-ZO4 - ZOOLOGY - LEPIDOPTERA AND HYMENOPTERA SLIDE SET - 30 slides



- 1 - Chewing-lapping mouthpart of honeybee w.m.
- 2 - Pollen-carrying leg of honeybee w.m.
- 3 - Membranous wing of honeybee w.m.
- 4 - Genuiculate antenna of honeybee w.m.
- 5 - The sting of a bee w.m.
- 6 - Compound eye of bee w.m.
- 7 - Siphoning mouthpart of butterfly w.m.
- 8 - Lepidotic of butterfly w.m.
- 9 - Plumose antenna of moth w.m.
- 10 - Clavate antenna of butterfly w.m.
- 11 - Muscle of silkworm l.s.
- 12 - Gnathal segments of larva of bombyx mori w.m.

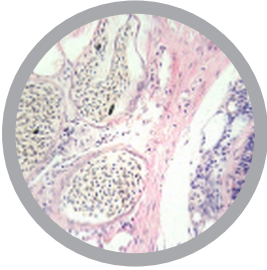
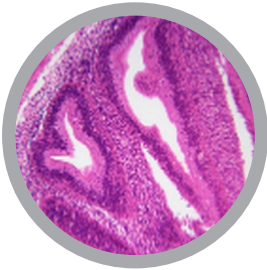
- 13 - Body wall of larva of bombyx mori t.s.
- 14 - Mid gut of bombyx mori t.s.
- 15 - Dorsal vessel of larva of bombyx mori t.s.
- 16 - Blood of bombyx mori smear
- 17 - Malpighian tube of bombyx mori w.m.
- 18 - Sericterium of bombyx mori t.s.
- 19 - Brain of bombyx mori t.s.
- 20 - Ovary of bombyx mori t.s.
- 21 - Testis of bombyx mori t.s.
- 22 - Eggs of bombyx mori t.s.
- 23 - Larva of bombyx mori w.m.
- 24 - One-year larva of bombyx mori w.m.
- 25 - Two-years larva of bombyx mori w.m.
- 26 - Three-years larva of bombyx mori w.m.
- 27 - Body of larva of hawk moth t.s.
- 28 - Eggs of hawk moth w.m.
- 29 - Eggs of Pieris rapae w.m.
- 30 - Chilo surpressalis w.m.

Cat #: CH-ZO5 - ZOOLOGY - AMPHIOXUS SLIDE SET - 16 slides



- 1 - Amphioxus w.m. (carmine)
- 2 - Amphioxus through oral hood t.s.
- 3 - Amphioxus through pharynx t.s.
- 4 - Amphioxus through intestine t.s.
- 5 - Amphioxus through gonad t.s.
- 6 - Amphioxus through caudal region t.s.
- 7 - Amphioxus combination (oral hood, pharynx, intestine, caudal region)
- 8 - Eggs of Amphioxus w.m.
- 9 - 2-cell stage of egg of amphioxus w.m.
- 10 - 4-cell stage of egg of amphioxus w.m.
- 11 - 8-cell stage of egg of amphioxus w.m.
- 12 - 16-cell stage of egg of amphioxus w.m.
- 13 - 32-cell stage of egg of amphioxus w.m.
- 14 - Blastula stage of egg of amphioxus w.m.
- 15 - Gastrula stage of amphioxus w.m.
- 16 - Amphioxus through front middle and back part t.s.

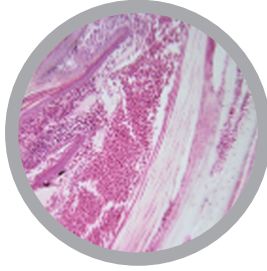
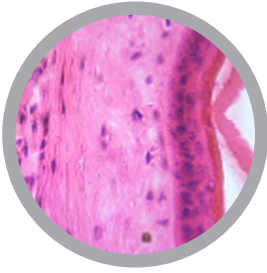
Cat #: CH-ZO6 - ZOOLOGY - FISH SLIDE SET - 35 slides



- 1 - Spleen of fish t.s.
- 2 - Oesophagus of fish sec.
- 3 - Wall of stomach of fish sec.
- 4 - Bone muscle of fish t.s.
- 5 - Heart of fish t.s.
- 6 - Rigidity squama of fish w.m.
- 7 - Smooth muscle of fish t.s.
- 8 - Caudal region of freshwater fish t.s.
- 9 - Brain of *Cyprinus carpio* l.s. (silver staining)
- 10 - Taste bud of *Cyprinus carpio* sec.
- 11 - Skin of *Lateolabrax japonicus* (show scale arrangement) t.s.
- 12 - Testis of Grass carp sec.
- 13 - Hepatopancreas of Grass carp t.s.
- 14 - Gill of Silver carp t.s.
- 15 - Testis of Silver carp t.s.
- 16 - Scale of young t.s. (silver staining)
- 17 - Spinal cord of *Hypophthalmichthys molitrix* t.s. (silver staining)
- 18 - Testis of *Hypophthalmichthys molitrix* sec.
- 19 - Ovary of *Hypophthalmichthys molitrix* sec.
- 20 - Blood of *Carassius auratus* smear
- 21 - Scale of *Carassius auratus* w.m.
- 22 - Brain of *Carassius auratus* l.s.
- 23 - Spermium of *Carassius auratus* sec.
- 24 - Ovary of *Carassius auratus* sec.
- 25 - Anterior kidney of *Carassius auratus* sec.
- 26 - Mid kidney of *Carassius auratus* sec.
- 27 - Hind kidney of *Carassius auratus* sec.
- 28 - Spinal cord of *Carassius auratus* t.s.
- 29 - Taste bud of *Carassius auratus* sec.
- 30 - Intestine of *Carassius auratus* sec.
- 31 - Pit organ of *Misgurnus anguillicadatus* t.s.
- 32 - Bristle of *Misgurnus anguillicadatus* (show taste bud) t.s.
- 33 - Intestine of *Misgurnus anguillicadatus* t.s.
- 34 - *Petromyzon median sagittal* section
- 35 - Skin of *Petromyzon* sec.

For slide set prices see [page 40](#). If you are interested in purchasing individual slides [CLICK HERE](#)

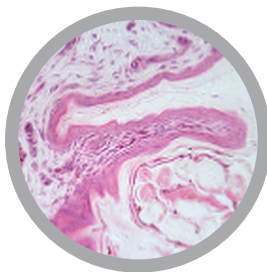
Cat #: CH-ZO7 - ZOOLOGY - AMPHIBIA AND REPTILIA SLIDE SET - 36 slides



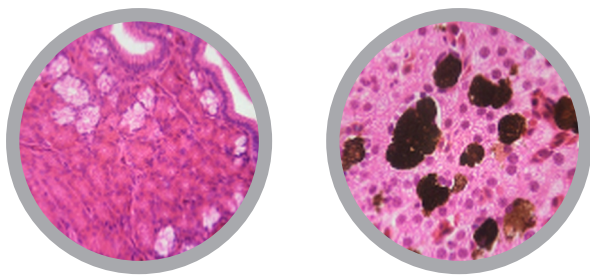
- 1 - Skin of *Cynops orientalis* (show poison gland) t.s.
- 2 - Liver of *Cynops orientalis* (show poison gland) sec.
- 3 - Skin of *bufo bufo* t.s.
- 4 - Spermium of *bufo bufo* t.s.
- 5 - Ovary of *bufo bufo* t.s.
- 6 - Tendon of *bufo bufo* t.s.
- 7 - Chromatophores of skin of frog w.m.
- 8 - Skin of frog t.s.
- 9 - Liver of frog t.s.
- 10 - Blood of frog smear
- 11 - Tongue of frog (ciliated epithelium) t.s.
- 12 - Lung of frog t.s.
- 13 - Ovary of frog sec.
- 14 - Intestine of frog t.s.
- 15 - Tadpole l.s.
- 16 - Testis of frog t.s.
- 17 - Skin of *Rana tigrina* t.s.
- 18 - Muscle of *Rana tigrina* t.s.
- 19 - Kidney of *Rana tigrina* t.s.
- 20 - Intestine of *Rana tigrina* t.s.
- 21 - Liver of *Rana tigrina* t.s.
- 22 - Kidney of gecko sec.
- 23 - Feet of gecko sec.
- 24 - Intestine of gecko t.s.
- 25 - Stomach of gecko sec.
- 26 - Lung of gecko sec.
- 27 - Skin of snake sec.
- 28 - Mesenteron of snake sec.
- 29 - Hindgut of snake sec.
- 30 - Rectum of snake sec.
- 31 - Muscle of snake sec.
- 32 - Stomach of snake sec.
- 33 - Gallbladder of snake sec.
- 34 - Blood of snake sec.
- 35 - Skin of lizard t.s.
- 36 - Blood of lizard smear

For slide set prices see [page 40](#). If you are interested in purchasing individual slides [CLICK HERE](#)

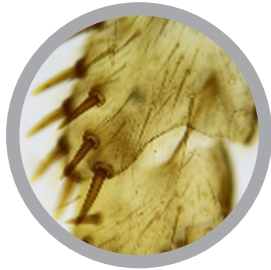
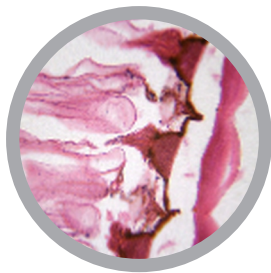
Cat #: CH-ZO8 - ZOOLOGY - BIRD SLIDE SET - 19 slides



- 1 - Hair and feather skin of bird sec.
- 2 - Skin of bird sec. (show feather)
- 3 - Feather of turkey w.m.
- 4 - Contour feather of bird (bright yellow) w.m.
- 5 - Down feather of bird w.m.
- 6 - Three types feather of birds (turkey, sparrow, pigeon)
- 7 - Cloaca of pigeon l.s.
- 8 - Lung of bird t.s.
- 9 - Eye of bird sagittal section
- 10 - Gizzard of duck t.s.
- 11 - Comb t.s.
- 12 - Feather of goose w.m.
- 13 - Ovary of bird (show forming egg) t.s.
- 14 - Ovary of chicken t.s.
- 15 - Glandulose stomach of chicken t.s.
- 16 - Lung of chicken t.s.
- 17 - Kidney of chicken t.s.
- 18 - Blood of *Gallus domesticus* smear
- 19 - Blood of pigeon smear



- 1 - Spleen of fish t.s.
- 2 - Oesophagus of fish sec.
- 3 - Wall of stomach of fish sec.
- 4 - Bone muscle of fish t.s.
- 5 - Heart of fish t.s.
- 6 - Rigidity squama of fish w.m.
- 7 - Smooth muscle of fish t.s.
- 8 - Caudal region of freshwater fish t.s.
- 9 - Brain of *Cyprinus carpio* l.s. (silver staining)
- 10 - Taste bud of *Cyprinus carpio* sec.
- 11 - Skin of *Lateolabrax japonicus* (show scale arrangement) t.s.
- 12 - Testis of Grass carp sec.
- 13 - Heptopancreas of Grass carp t.s.
- 14 - Gill of Silver carp t.s.
- 15 - Testis of Silver carp t.s.
- 16 - Scale of young t.s. (silver staining)
- 17 - Spinal cord of *Hypophthalmichthys molitrix* t.s. (silver staining)
- 18 - Testis of *Hypophthalmichthys molitrix* sec.
- 19 - Ovary of *Hypophthalmichthys molitrix* sec.
- 20 - Blood of *Carassius auratus* smear
- 21 - Scale of *Carassius auratus* w.m.
- 22 - Brain of *Carassius auratus* l.s.
- 23 - Spermary of *Carassius auratus* sec.
- 24 - Ovary of *Carassius auratus* sec.
- 25 - Anterior kidney of *Carassius auratus* sec.
- 26 - Mid kidney of *Carassius auratus* sec.
- 27 - Hind kidney of *Carassius auratus* sec.
- 28 - Spinal cord of *Carassius auratus* t.s.
- 29 - Taste bud of *Carassius auratus* sec.
- 30 - Intestine of *Carassius auratus* sec.
- 31 - Pit organ of *Misgurnus anguillicadatus* t.s.
- 32 - Bristle of *Misgurnus anguillicadatus* (show taste bud) t.s.
- 33 - Intestine of *Misgurnus anguillicadatus* t.s.
- 34 - *Petromyzon median* sagittal section
- 35 - Skin of *Petromyzon* sec.
- 36 - Skin of *Cynops orientalis* (show poison gland) t.s.
- 37 - Liver of *Cynops orientalis* (show poison gland) sec.
- 38 - Skin of *bufo bufo* t.s.
- 39 - Spermary of *bufo bufo* t.s.
- 40 - Ovary of *bufo bufo* t.s.
- 41 - Tendon of *bufo bufo* t.s.
- 42 - Chromatophores of skin of frog w.m.
- 43 - Skin of frog t.s.
- 44 - Liver of frog t.s.
- 45 - Blood of frog smear
- 46 - Tongue of frog (ciliated epithelium) t.s.
- 47 - Lung of frog t.s.
- 48 - Ovary of frog sec.
- 49 - Intestine of frog t.s.
- 50 - Tadpole l.s.
- 51 - Testis of frog t.s.
- 52 - Skin of *Rana tigrina* t.s.
- 53 - Muscle of *Rana tigrina* t.s.
- 54 - Kidney of *Rana tigrina* t.s.
- 55 - Intestine of *Rana tigrina* t.s.
- 56 - Liver of *Rana tigrina* t.s.
- 57 - Kidney of gecko sec.
- 58 - Feet of gecko sec.
- 59 - Intestine of gecko t.s.
- 60 - Stomach of gecko sec.
- 61 - Lung of gecko sec.
- 62 - Skin of snake sec.
- 63 - Mesenteron of snake sec.
- 64 - Hindgut of snake sec.
- 65 - Rectum of snake sec.
- 66 - Muscle of snake sec.
- 67 - Stomach of snake sec.
- 68 - Gallbladder of snake sec.
- 69 - Blood of snake sec.
- 70 - Skin of lizard t.s.
- 71 - Blood of lizard smear
- 72 - Haw and feather skin of bird sec.
- 73 - Skin of bird sec. (show feather)
- 74 - Feather of turkey w.m.
- 75 - Contour feather of bird (bright yellow) w.m.
- 76 - Down feather of bird w.m.
- 77 - Three types feather of birds (turkey, sparrow, pigeon)
- 78 - Cloaca of pigeon l.s.
- 79 - Lung of bird t.s.
- 80 - Eye of bird sagittal section
- 81 - Gizzard of duck t.s.
- 82 - Comb t.s.
- 83 - Feather of goose w.m.
- 84 - Ovary of bird (show forming egg) t.s.
- 85 - Ovary of chicken t.s.
- 86 - Glandulose stomach of chicken t.s.
- 87 - Lung of chicken t.s.
- 88 - Kidney of chicken t.s.



- 1 - Freshwater plankton w.m.
- 2 - Freshwater spongia w.m.
- 3 - Spicule of Spongia (calcium) w.m.
- 4 - Spicule of Spongia (silica) w.m.
- 5 - Hydra w.m.
- 6 - Hydra with bud w.m.
- 7 - Hydra t.s.
- 8 - Hydra l.s.
- 9 - Hydra through testes t.s.
- 10 - Hydra through ovary t.s.
- 11 - Nerve net of Hydra w.m.
- 12 - Hydra through bud l.s.
- 13 - Hydra through food in cavity l.s.
- 14 - Hydra with food in cavity w.m.
- 15 - Hydra through ovary & testes t.s.
- 16 - Hydra catch food l.s.
- 17 - Starfish through papula t.s.
- 18 - Body wall of Starfish t.s.
- 19 - Arm of starfish (show nerve) t.s.
- 20 - Starfish through central disc & arm l.s.
- 21 - Eggs of Sea urchin w.m.
- 22 - Amphioxus w.m. (carmine)
- 23 - Amphioxus through oral hood t.s.
- 24 - Amphioxus through pharynx t.s.
- 25 - Amphioxus through intestine t.s.
- 26 - Amphioxus through gonad t.s.
- 27 - Amphioxus through caudal region t.s.
- 28 - Amphioxus combination (oral hood, pharynx, intestine, caudal region)
- 29 - Eggs of Amphioxus w.m.
- 30 - Larva of trombididae w.m.
- 31 - Adult of trombididae w.m.
- 32 - Larva of gamasidae w.m.
- 33 - Adult of gamasidae mite w.m.
- 34 - Adult Dermatophagoides farinae w.m.
- 35 - Mouthpart of acanthosomatidae w.m.
- 36 - Macrosiphum avenae w.m.
- 37 - Chewing mouthpart of grasshopper w.m.
- 38 - Jumping leg of grasshopper w.m.
- 39 - Coriaceous wing of grasshopper w.m.
- 40 - Filiform antenna of grasshopper w.m.
- 41 - Malpighian tube of grasshopper w.m.
- 42 - Genitalia of grasshopper w.m.
- 43 - Dorsal vessel of grasshopper t.s.
- 44 - Ventral nerve cord of grasshopper l.s.
- 45 - Oesophagus of grasshopper t.s.
- 46 - Crop of grasshopper t.s.
- 47 - Proventriculus of grasshopper t.s.
- 48 - Mid gut of grasshopper t.s.
- 49 - Hind gut of grasshopper t.s.
- 50 - Testis of grasshopper l.s.
- 51 - Gizzard of cricket t.s.
- 52 - Front Legs of cricket w.m.
- 53 - Digging leg of mole cricket w.m.
- 54 - Mouthpart of cricket w.m.
- 55 - Eggs of anopheles w.m.
- 56 - Eggs of culex w.m.
- 57 - Eggs of aedes w.m.
- 58 - Pupa of anopheles w.m.
- 59 - Pupa of culex w.m.
- 60 - Pupa of aedes w.m.
- 61 - Larva of anopheles w.m.
- 62 - Larva of culex w.m.
- 63 - Larva of aedes w.m.
- 64 - Mouthpart of female anopheles w.m.
- 65 - Mouthpart of male anopheles w.m.
- 66 - Mouthpart of female culex w.m.
- 67 - Mouthpart of male culex w.m.
- 68 - Mouthpart of female aedes w.m.
- 69 - Mouthpart of male aedes w.m.
- 70 - Male and female anopheles w.m.
- 71 - Male and female culex w.m.
- 72 - Male and female aedes w.m.
- 73 - Mouthpart of musca domestica w.m.
- 74 - Maggot w.m.
- 75 - Adult of female phlebotomus w.m.
- 76 - Adult of male phlebotomus w.m.
- 77 - Mouthparts of culex (female and male) w.m.
- 78 - Mouthparts of china anopheles (male and female) w.m.
- 79 - Antenna of china anopheles (female and male) w.m.
- 80 - Eggs of musca domestica w.m.
- 81 - Pupa of musca domestica w.m.
- 82 - Sitodiplosis mosellana w.m.
- 83 - Piercing-sucking mouthpart of mosquito w.m.
- 84 - Siphoning mouthpart of musca domestica w.m.
- 85 - Pseudohalteres of musca domestica w.m.
- 86 - Aristate antenna of musca domestica w.m.
- 87 - Whorled antenna of male mosquito w.m.
- 88 - Wings of drosophila w.m.
- 89 - Incomplete wings of drosophila w.m.
- 90 - Drosophila melanogaster w.m. female
- 91 - Drosophila melanogaster w.m. male
- 92 - Eggs of drosophila melanogaster w.m.
- 93 - Legs of musca domestica w.m.
- 94 - Wings of musca domestica w.m.
- 95 - Wing of culex w.m.
- 96 - Larva of chironomus w.m.
- 97 - Compound eye of musca domestica w.m.
- 98 - Chewing-lapping mouthpart of honey-
bee w.m.
- 99 - Pollen-carrying leg of honeybee w.m.
- 100 - Membranous wing of honeybee w.m.
- 101 - Genuiculate antenna of honeybee w.m.
- 102 - The sting of a bee w.m.
- 103 - Compound eye of bee w.m.
- 104 - Siphoning mouthpart of butterfly
w.m.
- 105 - Lepidotic of butterfly w.m.
- 106 - Plumose antenna of moth w.m.
- 107 - Clavate antenna of butterfly w.m.
- 108 - Muscle of silkworm l.s.
- 109 - Gnathal segments of larva of bombyx
mori w.m.
- 110 - Body wall of bombyx mori larva t.s.
- 111 - Mid gut of bombyx mori t.s.
- 112 - Dorsal vessel of larva of bombyx
mori t.s.
- 113 - Blood of bombyx mori smear
- 114 - Malpighian tube of bombyx mori
w.m.
- 115 - Sericterium of bombyx mori t.s.
- 116 - Brain of bombyx mori t.s.
- 117 - Ovary of bombyx mori t.s.
- 118 - Testis of bombyx mori t.s.
- 119 - Eggs of bombyx mori t.s.
- 120 - Larva of bombyx mori w.m.
- 121 - One-year larva of bombyx mori w.m.
- 122 - 2 years larva of bombyx mori w.m.
- 123 - 3 years larva of bombyx mori w.m.
- 124 - Body of larva of hawk moth t.s.
- 125 - Eggs of hawk moth w.m.
- 126 - Eggs of Pieris rapae w.m.
- 127 - Chilo surpressalis w.m.

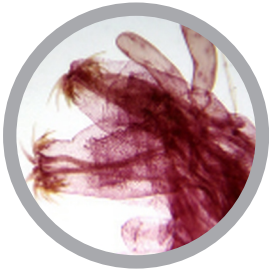
Cat #: CH-ZO11 - ZOOLOGY - INSECT PARTS SLIDE SET - 41 slides



- 1 - Legs of musca domestica w.m.
- 2 - Pollen-carrying leg of honeybee w.m.
- 3 - Digging leg of mole cricket w.m.
- 4 - Jumping leg of grasshopper w.m.
- 5 - Front Legs of cricket w.m.
- 6 - Climbing leg of louse w.m.
- 7 - Walking leg of cockroach w.m.
- 8 - Grasping leg of mantis w.m.
- 9 - Clasp ing leg of diving beetle w.m.
- 10 - Antenna of china anopheles (female and male) w.m.
- 11 - Aristate antenna of musca domestica w.m.
- 12 - Antenna of male mosquito w.m.
- 13 - Genuiculate antenna of honeybee w.m.
- 14 - Plumose antenna of moth w.m.
- 15 - Clavate antenna of butterfly w.m.
- 16 - Filiformis antenna of grasshopper w.m.
- 17 - Setaceous antenna of dragonfly w.m.
- 18 - Moniliform antenna of termite w.m.
- 19 - Serrate antenna of epicauta gorhami w.m.

- 20 - Mouthpart of acanthosomatidae w.m.
- 21 - Mouthpart of female anopheles w.m.
- 22 - Mouthpart of male anopheles w.m.
- 23 - Mouthpart of female aedes w.m.
- 24 - Mouthpart of male aedes w.m.
- 25 - Mouthpart of musca domestica w.m.
- 26 - Mouthparts of culex (female and male) w.m.
- 27 - Mouthparts of china anopheles (female and male) w.m.
- 28 - Piercing-sucking mouthpart of mosquito w.m.
- 29 - Siphoning mouthpart of musca domestica w.m.
- 30 - Chewing-lapping mouthpart of honeybee w.m.
- 31 - Siphoning mouthpart of butterfly w.m.
- 32 - Chewing mouthpart of grasshopper w.m.
- 33 - Mouthpart of cricket w.m.
- 34 - Mouthpart of blackbeetle w.m.
- 35 - Wings of drosophila w.m.
- 36 - Incomplete wings of drosophila w.m.
- 37 - Wings of musca domestica w.m.
- 38 - Wing of culex w.m.
- 39 - Membranous wing of honeybee w.m.
- 40 - Coriaceous wing of grasshopper w.m.
- 41 - Wing of aeshna cyanea sec.

Cat #: CH-ZO12 - ZOOLOGY - INSECT LIFE CYCLE SLIDE SET - 28 slides



- 1 - Eggs of anopheles w.m.
- 2 - Eggs of culex w.m.
- 3 - Eggs of aedes w.m.
- 4 - Eggs of musca domestica w.m.
- 5 - Eggs of drosophila melanogaster w.m.
- 6 - Eggs of bombyx mori t.s.
- 7 - Eggs of hawk moth w.m.
- 8 - Eggs of Pieris rapae w.m.
- 9 - Eggs of pediculus humanus w.m.
- 10 - Eggs of pulex w.m.
- 11 - Pupa of anopheles w.m.
- 12 - Pupa of culex w.m.
- 13 - Pupa of aedes w.m.
- 14 - Pupa of musca domestica w.m.
- 15 - Larva of trombididae w.m.
- 16 - Larva of gamasidae w.m.
- 17 - Larva of anopheles w.m.
- 18 - Larva of culex w.m.
- 19 - Larva of aedes w.m.
- 20 - Larva of chironomus w.m.
- 21 - Gnathal segments of larva of bombyx mori w.m.
- 22 - Body wall of larva of bombyx mori t.s.
- 23 - Dorsal vessel of larva of bombyx mori t.s.
- 24 - Larva of bombyx mori w.m.
- 25 - One-year larva of bombyx mori w.m.
- 26 - Two-years larva of bombyx mori w.m.
- 27 - Three-years larva of bombyx mori w.m.
- 28 - Body of larva of hawk moth t.s.