

2011/12



MEDICAL & SCIENCE MEDIA

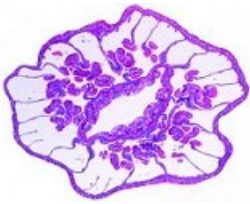
**Zoology
MICROSCOPE SLIDES**

P.O Box 136,
MT DRUITT N.S.W 2770 Australia

Tele: (02) 9675 7750

Fax: (02) 9675 7702

<http://www.msmedia.com.au/zoology.php>

Cat #: JL-1ZM**Invertebrata Slide Set****25 slides**

- 1 - Amoeba proteus, showing nucleus and pseudopodia w.m.
- 2 - Euglena, a common flagellate with eye spot
- 3 - Paramecium, a common ciliate, nuclei stained
- 4 - Sycon, marine sponge, t.s. of body
- 5 - Hydra, extended specimen for general body structure w.m.
- 6 - Dicrocoelium lanceolatum, sheep liver fluke, w.m.
- 7 - Planaria, t.s. of body for general study
- 8 - Taenia saginata, tapeworm, proglottids in different stages t.s.
- 9 - Trichinella spiralis, l.s. of muscle with encysted larvae
- 10 - Lumbricus, earthworm, t.s. of body in region of typhlosole
- 11 - Daphnia, water flea w.m.
- 12 - Cyclops, copepod w.m.
- 13 - Spider, leg with comb w.m.
- 14 - Spider, spinneret w.m.
- 15 - Musca domestica, house fly, head and mouth parts w.m.
- 16 - Periplaneta, cockroach, biting mouth parts w.m.
- 17 - Apis mellifica, honey bee, mouth parts of worker w.m.
- 18 - Musca domestica, house fly, leg with pulvilli w.m.
- 19 - Apis mellifica, anterior and posterior wing w.m.
- 20 - Trachea from insect w.m.
- 21 - Spiracle from insect w.m.
- 22 - Drosophila, fruit fly, sagittal l.s. of adult specimen
- 23 - Snail, radula w.m. or section
- 24 - Snail, t.s. through body showing internal organs
- 25 - Asterias, starfish, t.s. of arm (ray)

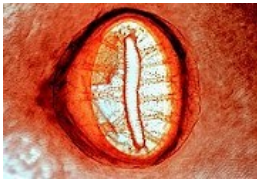
Cat #: JL-2ZM**Invertebrata, Supplementary Slide Set****50 slides**

- 1 - Radiolaria, strewn slide of mixed species
- 2 - Foraminifera, strewn slide of mixed species
- 3 - Ceratium, dinoflagellates from plankton
- 4 - Trypanosoma, causing sleeping disease, blood smear
- 5 - Plasmodium, malaria parasite, blood smear
- 6 - Eimeria stiedae, in t.s. of rabbit liver with parasites in situ

- 7 - Spongilla, fresh water sponge, gemmulae (winter bodies)
- 8 - Hydra, t.s. of body showing ectoderm and endoderm
- 9 - Obelia hydroid, w.m. of colony, hydrants and gonothecae
- 10 - Obelia medusa, jellyfish. w.m. for general study
- 11 - Actinia, sea anemone, t.s. young specimen
- 12 - Fasciola hepatica, beef liver fluke, t.s. of body
- 13 - Fasciola hepatica, ova w.m.
- 14 - Ascaris, roundworm, t.s. of female in region of gonads
- 15 - Ascaris, t.s. of male in region of gonads
- 16 - Lumbricus, earthworm, l.s. of anterior region with gonads
- 17 - Lumbricus, sperm smear with developing spermatozoa
- 18 - Hirudo medicinalis, leech, t.s. of body
- 19 - Sagitta, arrow worm, entire specimen w.m.
- 20 - Astacus, crayfish, gills t.s.
- 21 - Astacus, crayfish, liver t.s.
- 22 - Astacus, crayfish, testis t.s. showing spermatogenesis
- 23 - Astacus, crayfish, ovary t.s. showing developing ova
- 24 - Astacus, crayfish, intestine t.s.
- 25 - Spider, abdomen with internal organs l.s.
- 26 - Dermanyssus gallinae, chicken mite w.m.
- 27 - Pieris, butterfly, head and mouth parts (sucking tube) w.m.
- 28 - Vespa, wasp, biting mouth parts w.m.
- 29 - Carabus, ground beetle, biting mouth parts w.m.
- 30 - Culex pipiens, mosquito, piercing-sucking mouth parts w.m.
- 31 - Melolontha, cockchafer, antenna w.m.
- 32 - Apis mellifica, honey bee, anterior leg with eye brush w.m.
- 33 - Apis mellifica, posterior leg with pollen basket w.m.
- 34 - Pieris, butterfly, portion of wing with scales w.m.
- 35 - Apis mellifica, honey bee, cornea from eye w.m.
- 36 - Apis mellifica, honey bee, sting with poison sac w.m.
- 37 - Culex pipiens, common mosquito, t.s. of abdomen
- 38 - Apis mellifica, honey bee, head with compound eyes and brain t.s.
- 39 - Apis mellifica, honey bee, abdomen of worker t.s.
- 40 - Ctenocephalus, dog flea, w.m. of adult
- 41 - Chironomus, gnat, larva w.m.
- 42 - Bombyx mori, silkworm, t.s. of caterpillar, spinning glands
- 43 - Helix, snail, hermaphrodite gland (ovotestis) t.s.
- 44 - Helix, snail, liver t.s.
- 45 - Helix, snail, eye l.s.
- 46 - Mya arenaria, clam, gills t.s. and l.s.
- 47 - Asterias, starfish, horizontal section of young specimen
- 48 - Psammechinus, sea urchin, pluteus larva w.m.
- 49 - Branchiostoma lanceolatum, t.s. of body with testis
- 50 - Branchiostoma lanceolatum, t.s. of body with ovaries

[Cat #: JL-3ZM](#)

Insecta Slide Set



25 slides

- 1 - *Musca domestica*, house fly, leaking-sucking mouth parts w.m.
- 2 - *Pieris*, butterfly, sucking mouth parts w.m.
- 3 - *Carabus*, ground beetle, biting mouth parts (carnivore) w.m.
- 4 - *Melolontha*, cockchafer, chewing mouth parts (herbivore) w.m.
- 5 - *Pyrrhocoris*, bug, piercing sucking mouth parts w.m.
- 6 - *Bombyx mori*, silkworm moth, chewing mouth parts
- 7 - *Apis mellifica*, honey bee, leaking sucking mouth parts of worker w.m.
- 8 - *Culex pipiens*, mosquito, piercing sucking mouth parts w.m.
- 9 - *Melolontha*, cockchafer, antenna with sense organs w.m.
- 10 - *Bombyx mori*, silkworm moth, feathered antenna w.m.
- 11 - *Apis mellifica*, anterior leg with eye brush w.m.
- 12 - *Apis mellifica*, posterior leg with pollen basket w.m.
- 13 - *Musca domestica*, house fly, leg with pulvilli w.m.
- 14 - *Apis mellifica*, anterior and posterior wings w.m.
- 15 - *Pieris*, butterfly, portion of wings with scales w.m.
- 16 - Trachea from insect w.m.
- 17 - Spiracle from insect w.m.
- 18 - Cornea isolated from insect eye w.m.
- 19 - *Apis mellifica*, honey bee, sting and poison sac w.m.
- 20 - *Apis mellifica*, head with compound eyes and brain t.s.
- 21 - *Bombyx mori*, silkworm, t.s. showing silk spinning glands
- 22 - *Drosophila*, fruit fly, w.m. of adult
- 23 - *Ctenocephalus canis*, dog flea, w.m. of adult
- 24 - *Culex pipiens*, mosquito, w.m. of larva
- 25 - *Chironomus*, gnat, w.m. of larva

[Cat #: JL-4ZM](#)

Insecta, Supplementary Slide Set



36 slides

- 1 - *Gomphocerus*, grasshopper, biting mouth parts of a herbivore w.m.
- 2 - *Vespa vulgaris*, wasp, biting mouth parts of carnivore w.m.

- 3 - *Periplaneta*, cockroach, chewing biting mouth parts w.m.
- 4 - *Apis mellifica*, honey bee, mouth parts of worker t.s.
- 5 - *Culex pipiens*, mosquito, mouth parts of female t.s.
- 6 - *Pieris*, butterfly, mouth parts t.s.
- 7 - *Pyrrhocoris*, bug, mouth parts t.s.
- 8 - *Curculionidae*, weevil, head with mouth parts and geniculate antennae w.m.
- 9 - *Chironomus*, gnat, head with mouth parts and feathered antennae w.m.
- 10 - *Pieris*, butterfly, clubbed antenna w.m.
- 11 - *Pieris*, butterfly, walking leg w.m.
- 12 - *Pieris*, butterfly, abdominal foot of caterpillar w.m.
- 13 - *Melolontha*, cockchafer, digging leg w.m.
- 14 - Aquatic insect, swimming leg w.m.
- 15 - *Gomphocerus*, grasshopper, leg with stridulatory organ w.m.
- 16 - *Chrysopa*, wing of neuroptera w.m.
- 17 - *Musca domestica*, house fly, wing and haltere w.m.
- 18 - *Cantharis*, beetle, chitinous and membranous wings w.m.
- 19 - *Drosophila*, fruit fly, sagittal l.s. for general insect anatomy
- 20 - *Carausius*, walking stick, abdomen t.s. for internal organs
- 21 - *Cloeon* or *Baetis*, May fly, head and eyes t.s.
- 22 - *Carabus*, ground beetle, gizzard t.s.
- 23 - *Periplaneta*, chyle, middle intestine t.s. (Malpighian tubules)
- 24 - *Periplaneta*, rectum with ampulli t.s.
- 25 - Ovaries of insect, sagittal l.s. for developing ova
- 26 - Testis of insect, t.s. to show spermatogenesis and cell division
- 27 - *Colembola*, spring tail, adult w.m.
- 28 - *Caenis*, May fly, adult w.m.
- 29 - *Caenis*, nymph with tracheal gills w.m.
- 30 - *Pediculus humanus*, human louse, adult w.m.
- 31 - *Thysanoptera*, thrips, adult w.m.
- 32 - *Aphidae*, plant lice adults and larvae w.m.
- 33 - *Psylla*, adult w.m.
- 34 - *Chironomus*, gnat, adult male w.m.
- 35 - *Corethra*, gnat, larva w.m.
- 36 - *Lasius*, ant, winged adult w.m.

[Cat #: JL-5ZM](#)

Protozoa Slide Set



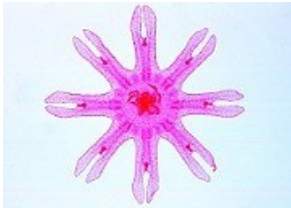
10 slides

- 1 - *Amoeba proteus*, Rhizopoda, w.m.
- 2 - *Radiolaria*, mixed species, fossil
- 3 - Foraminifera from Mediterranean sea, mixed species, recent
- 4 - *Euglena viridis*, a common green flagellate, w.m.
- 5 - *Ceratium hirundinella*, fresh-water Dinoflagellate w.m.
- 6 - *Trypanosoma gambiense*, causes African sleeping sickness, blood smear

- 7 - Plasmodium, causes human malaria, blood smear
- 8 - Eimeria stiedae, causing coccidiosis, t.s. of infected liver, different phases of developing
- 9 - Paramecium, a common ciliate, micro- and macronuclei stained
- 10 - Vorticella, a coloniote ciliate

Cat #: JL-6ZM

Coelenterata and Porifera Slide Set



10 slides

- 1 - Sycon, a small marine sponge of the sycon type, l.s. and t.s. on one slide
- 2 - Spongilla, fresh-water sponge, t.s.
- 3 - Euspongia, commercial sponge, t.s.
- 4 - Sponge spicules of different kinds, mixed species w.m.
- 5 - Hydra, fresh water polyp, extended and w.m.
- 6 - Hydra, fresh water polyp t.s. in different levels
- 7 - Laomedea, w.m. of colony, vegetative and reproductive polyps
- 8 - Obelia, w.m. of medusa
- 9 - Aurelia, jellyfish, w.m. of ephyra
- 10 - Actinia, sea anemone, l.s. and t.s.

Cat #: JL-7ZM

Vermes Slide Set



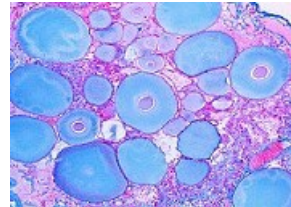
20 slides

- 1 - Planaria, (Turbellaria) w.m.
- 2 - Planaria, t.s. for general structure
- 3 - Fasciola hepatica, large liver fluke, w.m.
- 4 - Fasciola hepatica, t.s. of middle region of body
- 5 - Taenia sp., tapeworm, proglottids, w.m.
- 6 - Taenia sp., mature proglottids, t.s.
- 7 - Taenia or Moniezia, tapeworm, scolex and proglottides, w.m.
- 8 - Echinococcus multilocularis, infected liver, sec.
- 9 - Enterobius vermicularis, pinworm, w.m.
- 10 - Trichinella spiralis, encysted larvae in muscles, l.s.
- 11 - Ascaris, roundworm, adult male and female, t.s.
- 12 - Nemertine, marine species, t.s. of middle region of body
- 13 - Nereis, seaworm, t.s. for general structure
- 14 - Tubifex, oligochaete, w.m.
- 15 - Hirudo medicinalis, leech, t.s. for general structure

- 16 - Lumbricus, earthworm, anterior end, l.s.
- 17 - Lumbricus, earthworm, region of seminal vesicles, t.s.
- 18 - Lumbricus, earthworm, t.s. with stomach
- 19 - Lumbricus, earthworm, t.s. with intestine and nephridia
- 20 - Lumbricus, earthworm, t.s. with setae

Cat #: JL-8ZM

Crustacea Slide Set

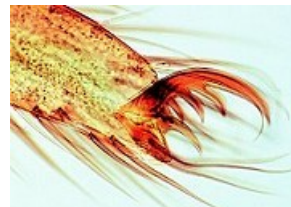


10 slides

- 1 - Daphnia sp., water flea, w.m.
- 2 - Cyclops sp., copepod, w.m.
- 3 - Gammarus, amphipode, w.m.
- 4 - Lepas anatifera, barnacle, w.m. of catching leg
- 5 - Artemia salina, brine shrimp, various developing stages on each slide, w.m.
- 6 - Nauplius larva, w.m.
- 7 - Astacus, crayfish, eye, l.s.
- 8 - Astacus, gills, t.s.
- 9 - Astacus, stomach, t.s.
- 10 - Astacus, intestine, t.s.

Cat #: JL-9ZM

Arachnoidea and Myriapoda Slide Set



12 slides

- 1 - Garden spider, chelicera and pedipalp, female, w.m.
- 2 - Garden spider, w.m. of leg
- 3 - Garden spider, w.m. of spinnerets
- 4 - Garden spider, abdomen with book-lungs l.s.
- 5 - Garden spider, l.s. of the cephalothorax showing the central nervous system
- 6 - Varroa, parasitic mite of bees w.m.
- 7 - Tyroglyphus farinae, mite from meal, w.m.
- 8 - Dermanyssus gallinae, chicken mite, w.m.
- 9 - Sarcoptes, infected skin, showing eggs and mites. sec.
- 10 - Lithobius, centipede, w.m. of mouth parts
- 11 - Lithobius, centipede, body, t.s.
- 12 - Diplopoda sp., body, t.s.

[Cat #: JL-10ZM](#)

Apterigota and Orthoptera Slide Set



10 slides

- 1 - Lepisma, silverfish, w.m. of scales from body
- 2 - Podura, spring tail, adult w.m.
- 3 - Forficula, earwig, forceps of male, w.m.
- 4 - Forficula, earwig, w.m. of upper and lower wing
- 5 - Cockroach, w.m. of dissected biting-lapping mouth parts
- 6 - Periplaneta, cockroach, gizzard with chitinous teeth w.m.
- 7 - Gomphocerus, grasshopper, mouth parts w.m.
- 8 - Gomphocerus, grasshopper, w.m. of jumping leg
- 9 - Cricket, Malpighian tubules and intestine, t.s.
- 10 - Carausius, grasshopper, t.s. of testis showing spermatogenesis, carefully stained for meiotic and mitotic stages

[Cat #: JL-11ZM](#)

Archiptera and Rhynchota Slide Set

10 slides

- 1 - Thysanoptera, thrips, w.m. of adult
- 2 - Caenis, May fly, adult w.m.
- 3 - Caenis, May fly, nymph, w.m. of trachea gill
- 4 - Pediculus corporis, human body louse, w.m. adult
- 5 - Louse eggs attached to the hair, w.m.
- 6 - Aphidae sp., plant lice, w.m. of several per slide
- 7 - Squash bug, wings, w.m.
- 8 - Squash bug, mouth parts w.m., long piercing-sucking tube
- 9 - Cimex lectularius, bed bug, adult w.m.
- 10 - Diving beetle or water bug (Gerris), swimming leg w.m.

[Cat #: JL-12ZM](#)

Neuroptera and Lepidoptera Slide Set



10 slides

- 1 - Chrysopa, w.m. of typical neuroptera wing
- 2 - Caterpillar of Bombyx, t.s. of the body
- 3 - Caterpillar of Bombyx, prolegs, w.m.
- 4 - Lepidoptera, mouth parts of moth, sucking tubes, w.m.
- 5 - Caterpillar of Pieris, butterfly, biting mouth parts, w.m.

- 6 - Caterpillar, w.m. of young specimen
- 7 - Caterpillar of Bombyx, trachea w.m. showing cellular structure tracheal rings and fine branches
- 8 - Lepidoptera, wing showing scales of butterfly, w.m.
- 9 - Lepidoptera, wing showing scales of moth, w.m.
- 10 - Lepidoptera, antennae of butterfly and of moth, w.m.

[Cat #: JL-13ZM](#)

Hymenoptera and Coleoptera Slide Set

15 slides

- 1 - Lasius, ant, worker w.m.
- 2 - Apis mellifica, Honeybee, wings with hooks and ridge for locking the wings, w.m.
- 3 - Apis mellifica, hind leg with pollen basket, w.m.
- 4 - Apis mellifica, anterior leg with eye brush w.m.
- 5 - Apis mellifica, sting apparatus with poison sac, w.m.
- 6 - Apis mellifica, mouth parts, dissected and w.m.
- 7 - Apis mellifica, posterior leg with pollen basket w.m.
- 8 - Vespa vulgaris, wasp, biting mouth parts of a carnivore, w.m.
- 9 - Melolontha, cockchafer, laminate antenna, w.m.
- 10 - Melolontha, cockchafer, ovary t.s.
- 11 - Water beetle, stigma, w.m.
- 12 - Colorado beetle, w.m. of chewing mouth parts
- 13 - Cornea, isolated from eye of house fly, w.m. showing facets
- 14 - Beetle, w.m. of digging leg
- 15 - Water beetle (Gyrinus), w.m. of swimming leg

[Cat #: JL-14ZM](#)

Diptera and Aphaniptera Slide Set



15 slides

- 1 - Musca domestica, House fly, proboscis, lapping, w.m.
- 2 - Musca domestica, leg with clinging pads, w.m.
- 3 - Musca domestica, w.m. of wing
- 4 - Musca domestica, aristate antenna, w.m.
- 5 - Musca domestica, compound eye, rad. sec.
- 6 - Midge, haltera, w.m.
- 7 - Drosophila, fruit fly, w.m. of adult specimen
- 8 - Stomoxys calcitrans, stable fly, piercing sucking mouth parts w.m.
- 9 - Culex pipiens, mosquito, head, with piercing mouth parts, w.m.
- 10 - Culex pipiens, mosquito, Culex, larva, w.m.
- 11 - Culex pipiens, mosquito, Culex pipiens, pupa w.m.
- 12 - Culex pipiens, mosquito, adult female w.m.
- 13 - Culex pipiens, mosquito, adult male w.m.
- 14 - Chironomus, gnat, larva w.m.
- 15 - Ctenocephalus, dog flea, w.m. of adult specimen

[Cat #: JL-15ZM](#)
Mollusca Slide Set

15 slides

- 1 - Chiton sp., t.s. of midbody
- 2 - Anodonta, mussel, t.s. of midbody
- 3 - Mya arenaria, clam, t.s. and l.s. of gills showing well developed ciliated epithelium
- 4 - Mussel, t.s. of siphonal tube
- 5 - Mya arenaria, clam, adductor muscle of shell, l.s.
- 6 - Pecten, t.s. of mantle margin showing primitive eye
- 7 - Anodonta, glochidia (larvae) w.m.
- 8 - Snail, typical t.s. of small specimen for general study
- 9 - Helix, snail, t.s. of lung cavity
- 10 - Helix, snail, t.s. of digestive gland (liver)
- 11 - Helix, snail, t.s. of kidney
- 12 - Helix, snail, t.s. of hermaphrodite gland
- 13 - Helix, snail, l.s. of tentacle showing lens eye
- 14 - Alloteuthis, young cuttlefish, l.s.
- 15 - Octopus, cuttlefish, section through sucking tube

[Cat #: JL-16ZM](#)
Echinodermata, Bryozoa and Brachiopoda Slide Set
10 slides

- 1 - Asterias, starfish, t.s. of ray showing general structure
- 2 - Young starfish, horizontal sec.
- 3 - Asterias, starfish, bipinnaria larva, w.m.
- 4 - Echinus, young sea urchin, radial section
- 5 - Development of sea urchin, eggs in different stages
- 6 - Echinus, sea urchin, pluteus larva
- 7 - Holothuria, sea cucumber, t.s.
- 8 - Holothuria, w.m. of limy bodies
- 9 - Bryozoa, moss animals, colony, sec.
- 10 - Lingula, Brachiopode, t.s.

[Cat #: JL-17ZM](#)
Cephalochordata Slide Set

10 slides

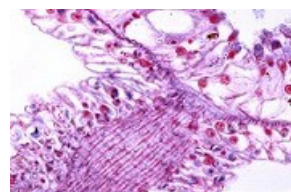
- 1 - Botryllus schlosseri, tunicate colony, w.m.
- 2 - Clavelina, tunicate, l.s. showing gill, intestine, gonads
- 3 - Clavelina, t.s. region of gills and intestine

- 4 - Balanoglossus, t.s. region of gonads
- 5 - Sagitta, arrow worm, w.m.
- 6 - Amphioxus, Branchiostoma, adult specimen, w.m.
- 7 - Amphioxus, Branchiostoma, larva, w.m.
- 8 - Amphioxus, Branchiostoma, t.s. region of gills and intestine
- 9 - Amphioxus, Branchiostoma, t.s. region of intestine and liver
- 10 - Amphioxus, Branchiostoma, head region, t.s. showing light sensitive pigment cells

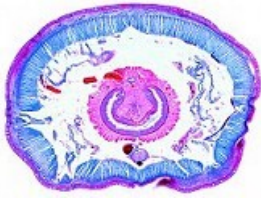
[Cat #: JL-18ZM](#)
Paramecium Slide Set

8 slides

- 1 - Paramecium, macro- and micronuclei stained
- 2 - Paramecium, food vacuoles and nuclei doubly stained
- 3 - Paramecium, pellicle stained after Bresslau
- 4 - Paramecium, silver stained to show the silver line system
- 5 - Paramecium, trichocysts shown by special preparation
- 6 - Paramecium, conjugation or after conjugation stages, nuclei stained
- 7 - Paramecium, fission stages, nuclei stained
- 8 - Paramecium, sections through many specimens, stained for internal structure

[Cat #: JL-19ZM](#)
Hydra Slide Set

8 slides

- 1 - Hydra, extended specimen for general body structure, carefully stained and w.m.
- 2 - Hydra with one or more buds w.m.
- 3 - Hydra, t.s. through body in different levels showing ectoderm with nematocysts, supporting lamella and endoderm
- 4 - Hydra, l.s. through body and tentacles
- 5 - Hydra with testis t.s.
- 6 - Hydra with ovaries t.s.
- 7 - Hydra, isolated cells showing the different cell types, nematocysts
- 8 - Hydra with food in digestive cavity, t.s.

[Cat #: JL-20ZM](#)
Earthworm Slide Set

12 slides

- 1 - Earthworm, region of typhlosolis, back of clitellum, the standard t.s.
- 2 - Earthworm, region of typhlosolis, back of clitellum, sagittal l.s.
- 3 - Earthworm, region of mouth, t.s. shows pharynx
- 4 - Earthworm, region of cerebral ganglion t.s.
- 5 - Earthworm, region of oesophagus and heart t.s.
- 6 - Earthworm, region of gonads showing ovary, t.s.
- 7 - Earthworm, region of gonads showing testis, t.s.
- 8 - Earthworm, region of clitellum t.s.
- 9 - Earthworm, region of mouth, oesophagus and hearts (1st to 9th segment) sag. l.s.
- 10 - Earthworm, region of gonads, seminal vesicles, (9th to 16th segment) sag. l.s.
- 11 - Earthworm, region of crop and gizzard (16th to 23rd segment) sag. l.s.
- 12 - Earthworm, spermatozoa in various stages of development, smear

[Cat #: JL-21ZM](#)
The Cockchafer Slide Set

9 slides

- 1 - Cockchafer, antenna w.m.
- 2 - Cockchafer, mouth parts, dissected and w.m.
- 3 - Cockchafer, head with brain and compound eyes t.s.
- 4 - Cockchafer, digging leg w.m.
- 5 - Cockchafer, intestine t.s.
- 6 - Cockchafer, ovary t.s.
- 7 - Cockchafer, testis t.s.
- 8 - Cockchafer, aedeagus w.m., male copulating organ
- 9 - Cockchafer, spiracle w.m.

[Cat #: JL-22ZM](#)
The House Fly Slide Set
7 slides

- 1 - House Fly, proboscis, lapping, w.m.
- 2 - House Fly, leg with clinging pads, w.m.
- 3 - House Fly, wing, w.m.
- 4 - House Fly, compound eye, rad. sec.
- 5 - House Fly, haltera, rudimentary under wing, w.m.

- 6 - House Fly, cornea, flat mount, showing facets
- 7 - House Fly, aristate antenna, w.m.

[Cat #: JL-23ZM](#)
The Honey Bee Slide Set

18 slides

- 1 - Honey bee, mouth parts of worker, w.m.
- 2 - Honey bee, mouth parts of worker, t.s.
- 3 - Honey bee, head with compound eyes and brain, t.s.
- 4 - Honey bee, cornea from eye, isolated and w.m.
- 5 - Honey bee, ocelli, w.m.
- 6 - Honey bee, antenna with sensory organs, w.m.
- 7 - Honey bee, anterior and posterior wing, w.m.
- 8 - Honey bee, anterior leg with eye brush, w.m.
- 9 - Honey bee, posterior leg with pollen basket, w.m.
- 10 - Honey bee, sting and poison sac, w.m.
- 11 - Honey bee, wax plate of worker, w.m.
- 12 - Honey bee, abdomen of worker, t.s. with intestine, nephridia, wax glands
- 13 - Honey bee, abdomen of queen, t.s. showing ovaries
- 14 - Honey bee, abdomen of drone, t.s. showing testis
- 15 - Honey bee, thorax of worker, t.s. showing muscles
- 16 - Honey bee, larva, entire specimen, sagittal l.s.
- 17 - Nosema apis, causing bee dysentery, t.s. of diseased intestine
- 18 - Bacillus larvae, causing foul brood, smear

[Cat #: JL-24ZM](#)
Mouth Parts of Insects Slide Set

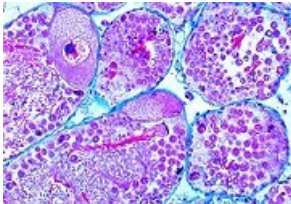
20 slides

- 1 - Periplaneta, cockroach, chewing biting mouth parts, dissected w.m.
- 2 - Carabus, ground beetle, biting mouth parts of a carnivore showing extra-intestinal digestion, w.m.
- 3 - Gomphocerus, grasshopper, biting mouth parts of a herbivore w.m.
- 4 - Vespa vulgaris, wasp, biting mouth parts of a carnivore w.m.
- 5 - Melolontha, cockchafer, chewing mouth parts of a herbivore, dissected and w.m.
- 6 - Apis mellifica, honey bee, leaking sucking mouth parts of worker w.m.
- 7 - Apis mellifica, honey bee, t.s. of mouth parts

- 8 - Pieris, butterfly, sucking mouth parts w.m.
- 9 - Pieris, butterfly, t.s. of mouth parts
- 10 - Pyrrhocoris, bug, piercing sucking mouth parts w.m.
- 11 - Pyrrhocoris, bug, t.s. of mouth parts
- 12 - Culex pipiens, common mosquito, piercing sucking mouth parts of female w.m.
- 13 - Culex pipiens, common mosquito, mouth parts of male w.m.
- 14 - Culex pipiens, t.s. of female mouth parts
- 15 - Stomoxys or Tabanus, stable fly, piercing sucking mouth parts w.m.
- 16 - Tabanus, t.s. of mouth parts
- 17 - Musca domestica, house fly, leaking sucking mouth parts w.m.
- 18 - Musca domestica, house fly, t.s. of mouth parts
- 19 - Bombyx mori, silkworm moth, chewing mouth parts w.m.
- 20 - Curculionidae, weevil, head with mouth parts w.m.

Cat #: JL-25ZM

The Snail Slide Set

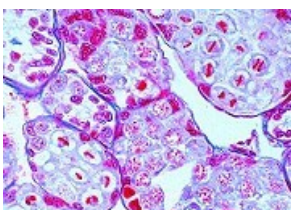


12 slides

- 1 - Snail, foot t.s., mucous and serous glands, muscles
- 2 - Snail, mantle margin t.s., chalk glands, mantle glands
- 3 - Snail, stomach t.s., digestive glands
- 4 - Snail, intestine t.s., mucous membrane, muscles
- 5 - Snail, liver t.s., chalk cells and liver cells
- 6 - Snail, hermaphrodite gland (ovotestis) t.s., ova and spermatozoa
- 7 - Snail, crystalline style and glands t.s.
- 8 - Snail, penis t.s., or spermoviduct t.s.
- 9 - Snail, flagellum t.s.
- 10 - Snail, heart and kidney t.s.
- 11 - Snail, lung t.s., with respiratory epithelium
- 12 - Snail, eye with lens and retina l.s.

Cat #: JL-26ZM

The Crayfish Slide Set



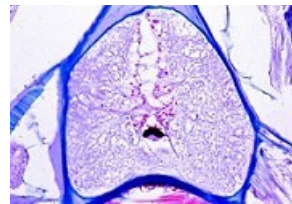
12 slides

- 1 - Crayfish, gills t.s., epithelium and vessels
- 2 - Crayfish, striated muscle l.s., showing striations very clearly
- 3 - Crayfish, antenna (decalcified) t.s., showing the chitinous skeleton

- 4 - Crayfish, compound eye l.s.
- 5 - Crayfish, cerebral ganglion t.s., nerve cells and fibres
- 6 - Crayfish, blood smear, with blood cells
- 7 - Crayfish, green gland t.s., an excretory organ
- 8 - Crayfish, stomach t.s., internal chitinous layer
- 9 - Crayfish, intestine t.s., folds of mucous membrane
- 10 - Crayfish, liver t.s., glandular tubules for reabsorption of food
- 11 - Crayfish, ovary t.s., development of ova
- 12 - Crayfish, testis t.s., spermatogenesis, cell division stages

Cat #: JL-27ZM

The Amphioxus Slide Set



8 slides

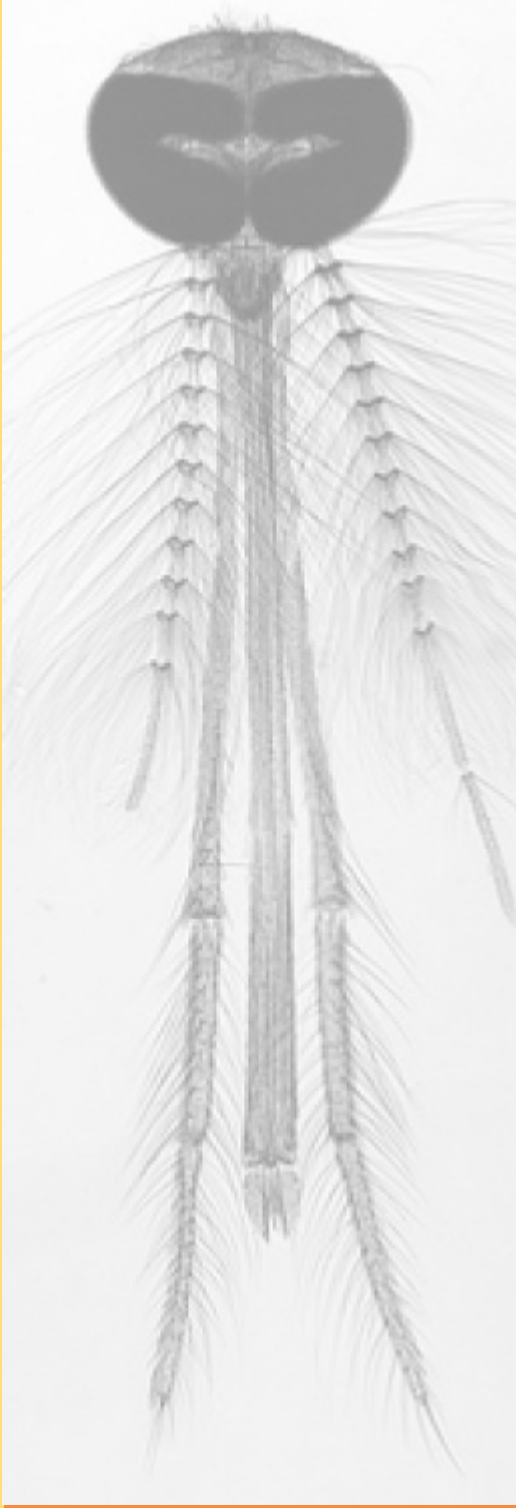
- 1 - Branchiostoma, entire specimen, stained and w.m. for general body study
- 2 - Branchiostoma, mouth region t.s., shows buccal cirri
- 3 - Branchiostoma, anterior pharynx with gills and notochord t.s.
- 4 - Branchiostoma, region of liver and ovaries t.s.
- 5 - Branchiostoma, region of liver and testis t.s.
- 6 - Branchiostoma, region of intestine t.s.
- 7 - Branchiostoma, tail t.s.
- 8 - Branchiostoma, midbody sagittal l.s.

Cat #: JL-28ZM

Different Types of Larvae Slide Set

15 slides

- 1 - Planula larva, Aurelia
- 2 - Actinula larva, Tubularia
- 3 - Trochophora larva, Polychaeta
- 4 - Trochophora larva in metamorphosis, Annelida
- 5 - Veliger larva, snail
- 6 - Actinotrocha larva, Phoronis
- 7 - Tornaria larva, Balanoglossus
- 8 - Bipinnaria larva, starfish
- 9 - Bipinnaria larva in metamorphosis, starfish
- 10 - Pluteus larva, sea-urchin
- 11 - Glochidia of clam
- 12 - Nauplius larva, Copepoda
- 13 - Zoea larve, Decapoda
- 14 - Cypris larva, Balanus
- 15 - Larva of Culex



P.O Box 136,
MT DRUITT N.S.W 2770

Australia

Tele: (02) 9675 7750

Fax: (02) 9675 7702

<http://www.msmedia.com.au>