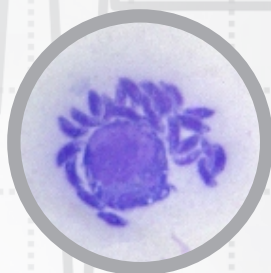
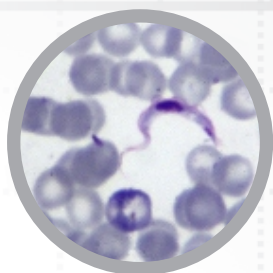


PARASITOLOGY SLIDE SETS

Cat #: CH-PAR1 - PROTOZOA SLIDE SET - 29 slides

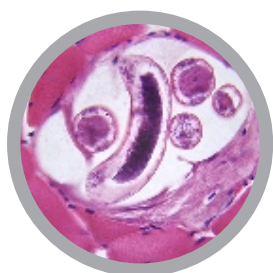


- 1 - Euglena w.m.
- 2 - Amoeba w.m.
- 3 - Paramecium caudatum w.m.
- 4 - Conjugation of Paramecium caudatum w.m.
- 5 - Binary fission of Paramecium caudatum w.m.
- 6 - Vorticella w.m.
- 7 - Stylonychia w.m.
- 8 - Entamoeba histolytica cyst w.m.
- 9 - Entamoeba coli Grassi trichrome smear
- 10 - Entamoeba coli cysts sec.
- 11 - Entamoeba histolytica trophozoites

- 12 - Iodamoeba butschlii von Prowazek smear
- 13 - Leishmania donovani amastigotes
- 14 - Leishmania donovani promastigotes
- 15 - Blood trypanosome smear
- 16 - Giardia lamblia trophozoites w.m.
- 17 - Giardia lamblia cysts w.m.
- 18 - Trichomonas vaginalis trophozoites w.m.
- 19 - Plasmodium vivax w.m.
- 20 - Plasmodium falciparum w.m.
- 21 - Plasmodium malariae
- 22 - Plasmodium berghei
- 23 - Toxoplasma gondii trophozoites w.m.
- 24 - Pneumocystis carinii cysts w.m.
- 25 - Oocyst of Eimeria tenella w.m.
- 26 - Balantidium coli cysts w.m.
- 27 - Balantidium coli trophozoites w.m.
- 28 - Babesia Canis blood smear
- 29 - Cryptosporidium

For slide set prices see [page 31](#). If you are interested in purchasing individual slides [CLICK HERE](#)

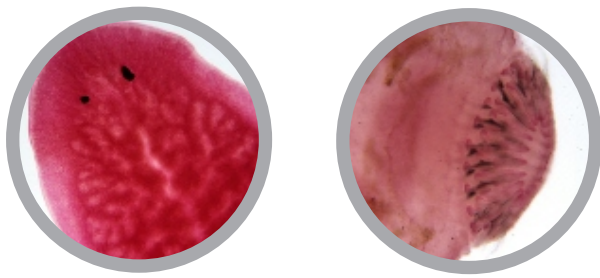
Cat #: CH-PAR3 - ROUNDWORMS SLIDE SET - 25 slides



- 1 - Ascaris lumbricoides (female and male) t.s.
- 2 - Ascaris lumbricoides (show connect sting) t.s.
- 3 - Eggs of Enterobius w.m.(natural color)
- 4 - Rotifera w.m.
- 5 - Zygote of Ascaris lumbricoides w.m. (natural color)
- 6 - Unfertilized eggs of Ascaris lumbricoides w.m. (natural color)
- 7 - Apoprotein zygote of Ascaris lumbricoides w.m. (natural color)
- 8 - Anterior end of Ascaris lumbricoides w.m.
- 9 - Back end of male Ascaris lumbricoides w.m.

- 10 - Parascaris equorum
- 11 - Eggs of Trichuris trichiura w.m.(natural color)
- 12 - Female Trichuris trichiura w.m.
- 13 - Male Trichuris trichiura w.m.
- 14 - Eggs of Ancylostoma w.m. (natural color)
- 15 - Microfilaria of Brugia malayi w.m.
- 16 - Adult of Trichinella spiralis w.m. (female)
- 17 - Trichinella spiralis (male)
- 18 - Larva of Trichinella spiralis w.m.
- 19 - Cyst of larva of Trichinella spiralis t.s. (H&E)
- 20 - Cyst of larva of Trichinella spiralis squash
- 21 - Eggs of Macracanthorhynchus hirudinaceus w.m. (natural color)
- 22 - Mixed eggs of Trematode w.m.
- 23 - Mixed eggs of Nematode w.m.
- 24 - Angiostrongyliasis (male) w.m.
- 25 - Angiostrongyliasis (female) w.m.

Cat #: CH-PAR2 - FLATWORM SLIDE SET - 49 slides



- 1 - Dugesia japonica (intestine injected) w.m.
- 2 - Dugesia japonica (shows reproduction system) w.m.
- 3 - Dugesia japonica through pharynx t.s.
- 4 - Dugesia japonica w.m.
- 5 - Dugesia japonica sagittal section
- 6 - Dugesia japonica through eyes t.s.
- 7 - Adult of Fasciola hepatica w.m.
- 8 - Fasciola hepatica t.s.
- 9 - Egg of Fasciola hepatica
- 10 - Mature proglottid of Taenia ovis w.m.
- 11 - Adult Clonorchis sinensis w.m.
- 12 - Adult Clonorchis sinensis t.s.
- 13 - Eggs of Clonorchis sinensis w.m. (nature color)
- 14 - Clonorchis sinensis with liver sec.
- 15 - Metacercaria of Clonorchis sinensis w.m.
- 16 - Eggs of Fasciolopsis buski w.m. (natural color)
- 17 - Adult of Fasciolopsis buski w.m.
- 18 - Eggs of Paragonimus westermani w.m. (natural color)
- 19 - Schistosoma japonicum (female) w.m.
- 20 - Schistosoma japonicum (male) w.m.
- 21 - Sexual mosaic of Schistosoma japonicum w.m.
- 22 - Eggs of Schistosoma japonicum w.m. (natural color)
- 23 - Miracidium of Schistosoma japonicum w.m.
- 24 - Sporocyst of Schistosoma japonicum w.m.

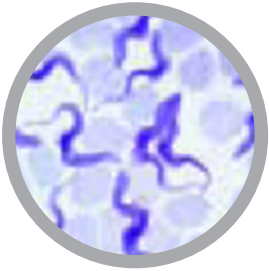
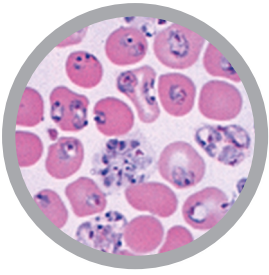
- 25 - Cercaria of Schistosoma japonicum w.m.
- 26 - Eggs of Taenia solium w.m. (natural color)
- 27 - Scolex of Taenia solium w.m.
- 28 - Immature proglottid of Taenia solium w.m.
- 29 - Mature proglottid of Taenia solium w.m.
- 30 - Cercaria of Taenia solium w.m.
- 31 - Gravid proglottid of Taenia solium w.m.
- 32 - Mature proglottid of Taenia saginatus w.m.
- 33 - Immature proglottid of Taenia saginatus w.m.
- 34 - Gravid proglottid of Taenia saginatus w.m. (ink injected)
- 35 - Eggs of Taenia saginatus w.m. (natural color)
- 36 - Scolex of Taenia saginatus sec.
- 37 - Echinococcus granulosus adult w.m.
- 38 - Hydatid sand w.m. (protoscolex)
- 39 - Mature proglottid of Dipylidium caninum w.m.
- 40 - Immature proglottid of Dipylidium caninum w.m.
- 41 - Scolex of Dipylidium caninum w.m.
- 42 - Gravid proglottid of Dipylidium caninum w.m.
- 43 - Proglottis of Moniezia expansa t.s.
- 44 - Mansoni Spirometra mature gravid proglottid
- 45 - Egg of Hymenolepis nana
- 46 - Immature section of Hymenolepis nana
- 47 - Mature section of Hymenolepis nana
- 48 - Gravid proglottid of Hymenolepis nana
- 49 - Adult of Hymenolepis nana

For slide set prices see [page 31](#). If you are interested in purchasing individual slides [CLICK HERE](#)

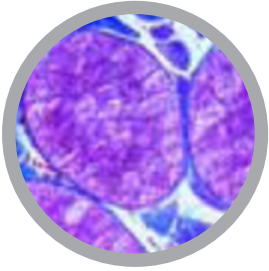
Cat #: CH-PAR4 - ECTOPARASITE SLIDE SET - 17 slides



- 1 - Adult of sarcoptidae w.m.
- 2 - Adult of Demodex w.m.
- 3 - Male and female Culex w.m.
- 4 - Male and female Aedes w.m.
- 5 - Maggot w.m.
- 6 - Adult of Ixodes w.m.
- 7 - Adult of Dermatophagoides fariane w.m. (dust mite)
- 8 - Pediculus humanus (female) w.m.
- 9 - Pediculus humanus (male) w.m.
- 10 - Eggs of Pediculus humanus w.m.
- 11 - Adult of female Phlebotomus w.m.
- 12 - Adult of male Phlebotomus w.m.
- 13 - Pulex w.m.
- 14 - Mouthpart of female Culex w.m.
- 15 - Adult pediculus comparison (human, pig and cattle)
- 16 - Bed bug w.m. (female)
- 17 - Bed bug w.m. (male)



- 1 - *Entamoeba histolytica*, amebic dysentery, smear or section
- 2 - *Leishmania donovani*, causes Kala-Azar, smear or section
- 3 - *Trypanosoma gambiense*, Central African sleeping disease, blood smear
- 4 - *Trypanosoma cruzi*, Chagas disease, blood smear
- 5 - *Plasmodium falciparum*, human malaria, blood smear with typical ring stages
- 6 - *Plasmodium berghei*, malaria in rodents, blood smear with vegetative forms and schizogony stages
- 7 - *Plasmodium* sp., malaria melanemia in human spleen, sec. showing pigment granules in endothelium
- 8 - *Toxoplasma gondii*, causing toxoplasmosis, smear or section of cyst
- 9 - *Babesia canis*, blood smear shows very heavy infection
- 10 - *Sarcocystis* sp., section of muscle showing the parasites in Miescher's tubes
- 11 - *Nosema apis*, honey bee dysentery, t.s. of diseased bee intestine
- 12 - *Monocystis agilis*, from earthworm seminal vesicle
- 13 - *Eimeria stiedae*, causes coccidiosis in rabbit liver, t.s. shows parasites in all stages
- 14 - *Fasciola hepatica*, beef liver fluke, w.m. of adult flat mount and carefully stained
- 15 - *Fasciola hepatica*, typical t.s. of body in different regions
- 16 - *Fasciola hepatica*, ova w.m.
- 17 - *Fasciola hepatica*, miracidia w.m.*
- 18 - *Schistosoma mansoni*, bilharziosis, adult male or female w.m.
- 19 - *Schistosoma mansoni*, section of infected snail liver showing redia and cercaria *
- 20 - *Schistosoma mansoni*, ova in faeces
- 21 - *Taenia* or *Moniezia*, tapeworm, scolex w.m.
- 22 - *Taenia pisiformis*, dwarf tapeworm, mature proglottids w.m.
- 23 - *Taenia saginata*, tapeworm, proglottids in different stages t.s.
- 24 - *Taenia saginata*, tapeworm, ova in faeces w.m.
- 25 - *Hymenolepis nana*, proglottids w.m.
- 26 - *Echinococcus granulosus*, dog tapeworm, scolices from cyst w.m. showing hooklets
- 27 - *Echinococcus granulosus*, cyst wall and scolices sec.
- 28 - *Ascaris lumbricoides*, roundworm of human, adult female t.s. in region of gonads
- 29 - *Ascaris lumbricoides*, adult male t.s. in region of gonads
- 30 - *Ascaris lumbricoides*, ova from faeces w.m.
- 31 - *Enterobius vermicularis* (*Oxyuris*), pin worm, adult specimen w.m.
- 32 - *Trichinella spiralis*, muscle with encysted larvae l.s.
- 33 - *Ancylostoma*, hookworm, adult male or female w.m.
- 34 - *Trichuris trichiura*, whip worm, ova from faeces w.m.
- 35 - *Strongyloides stercoralis*, larvae w.m.
- 36 - *Heterakis spumosa*, intestinal parasite of rat, adult male or female
- 37 - *Ixodes* sp., tick, adult w.m. Carrier of relapsing fever and borreliosis
- 38 - *Dermanyssus gallinae*, chicken mite w.m.
- 39 - *Acarapis woodi*, varroa, parasitic mite of honey bee, w.m.
- 40 - *Sarcoptes scabiei* (*Acarus siro*), section of diseased skin with parasites
- 41 - *Stomoxys calcitrans*, stable fly, piercing sucking mouth parts w.m.
- 42 - *Anopheles*, malaria mosquito, head and mouth parts of female w.m.
- 43 - *Culex pipiens*, common mosquito, head and mouth parts of female w.m.
- 44 - *Anopheles*, malaria mosquito, larva w.m.
- 45 - *Culex pipiens*, common mosquito, larva w.m.
- 46 - *Culex pipiens*, common mosquito, pupa w.m.
- 47 - *Cimex lectularius*, bed bug, w.m.
- 48 - *Pediculus humanus*, human louse, w.m.
- 49 - *Pediculus humanus*, louse eggs attached to the hair, w.m.
- 50 - *Ctenocephalus canis*, dog flea, adult w.m.



- 1 - Trypanosoma gambiense, Central African sleeping disease, blood smear
- 2 - Plasmodium berghei, malaria in rodents, blood smear with vegetative forms and schizogony stages
- 3 - Sarcocystis sp., section of muscle showing the parasites in Miescher's tubes
- 4 - Nosema apis, honey bee dysentery, t.s. of diseased bee intestine
- 5 - Eimeria stiedae, causes coccidiosis in rabbit liver, t.s. shows parasites in all stages
- 6 - Fasciola hepatica, beef liver fluke, w.m. of adult flat mount and carefully stained
- 7 - Fasciola hepatica, ova w.m.
- 8 - Taenia or Moniezia, tapeworm, scolex w.m.
- 9 - Taenia pisiformis, dog tapeworm, mature proglottids w.m.
- 10 - Taenia saginata, tapeworm, proglottids in different stages t.s.
- 11 - Hymenolepis nana, dwarf tapeworm, proglottids w.m.
- 12 - Echinococcus granulosus, cyst wall and scolices sec.
- 13 - Ascaris lumbricoides, roundworm of human, adult female t.s. in region of gonads
- 14 - Ascaris lumbricoides, ova from faeces w.m.
- 15 - Enterobius vermicularis (Oxyuris), pin worm, adult specimen w.m.
- 16 - Trichinella spiralis, muscle with encysted larvae l.s.
- 17 - Ixodes sp., tick, adult w.m. Carrier of relapsing fever and borreliosis
- 18 - Dermanyssus gallinae, chicken mite w.m.
- 19 - Acarapis woodi, varroa, parasitic mite of honey bee, w.m.
- 20 - Sarcoptes scabiei (Acarus siro), section of diseased skin with parasites
- 21 - Anopheles, malaria mosquito, head and mouth parts of female w.m.
- 22 - Culex pipiens, common mosquito, head and mouth parts of female w.m.
- 23 - Cimex lectularius, bed bug, w.m.
- 24 - Pediculus humanus, human louse, w.m.
- 25 - Ctenocephalus canis, dog flea, adult w.m.