

2011/12

MEDICAL & SCIENCE MEDIA

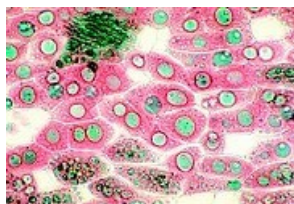
Miscellaneous MICROSCOPE SLIDES

P.O Box 136,
MT DRUITT N.S.W 2770 Australia

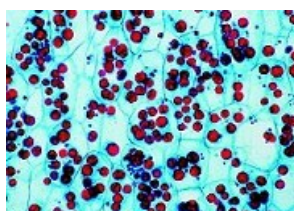
Tele: (02) 9675 7750

Fax: (02) 9675 7702

<http://www.msmedia.com.au/miscellaneous.php>

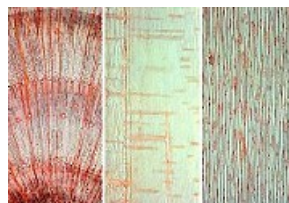
[Cat #: JL-1MM](#)**Foods and Spices Slide Set****25 slides**

- 1 - Potato tuber t.s.
- 2 - Wheat flour
- 3 - Rye flour
- 4 - Rice starch
- 5 - Potato starch
- 6 - Bean, pod with pericarp and seed t.s.
- 7 - Yeast
- 8 - Fresh milk, stained for fat
- 9 - Sour milk, stained for bacteria
- 10 - Bacteria from cheese
- 11 - Mould in spoiled foodstuffs
- 12 - Coffee bean t.s.
- 13 - Silvery pellicle of coffee bean
- 14 - Ceylon tea, leaves t.s.
- 15 - Paprika, ground
- 16 - Black pepper, ground
- 17 - Cocoa powder
- 18 - Nutmeg t.s.
- 19 - Mustard
- 20 - Ginger, ground
- 21 - Carrot, storage root t.s.
- 22 - Soya meal
- 23 - Corn starch
- 24 - Tobacco, leaves t.s.
- 25 - Hazelnut, t.s. stained for fat

[Cat #: JL-2MM](#)**Foods, Impurities and Adulterations Slide Set****25 slides**

- 1 - Wheat flour
- 2 - Rye flour
- 3 - Oat meal
- 4 - Solanum tuberosum, potato starch grains
- 5 - Rice starch
- 6 - Wheat bran
- 7 - Wheat flour adulterated with chalk
- 8 - Rye flour spoiled with moths
- 9 - Corn flour spoiled with spores of corn smut (Ustilago)
- 10 - Spoiled wheat flour (corroded starch)
- 11 - Wheat grain, t.s. for general study
- 12 - Wheat rust (Puccinia), uredinia on wheat leaf t.s.
- 13 - Rye grain, t.s. for general study
- 14 - Mites from meal (Tyroglyphus farinae)

- 15 - Ergot (Claviceps), t.s. of sclerotium
- 16 - Ingredients of rye bread
- 17 - Bacteria from bread, stained
- 18 - Yeast (Saccharomyces), budding cells
- 19 - Fruit rind of lemon, t.s. shows oil glands
- 20 - Milk, stained for fat
- 21 - Almond, t.s. of endosperm
- 22 - Coconut, t.s. of endosperm
- 23 - Cacao powder
- 24 - Cinnamon, ground
- 25 - Aniseed, ground

[Cat #: JL-3MM](#)**Wood Sections Slide Set****25 slides**

- 1 - Maple. Acer platanoides
- 2 - Apple. Pyrus malus
- 3 - Birch. Betula pendula
- 4 - Pear. Pyrus communis
- 5 - Mountain ash. Sorbus aucuparia
- 6 - Yew. Taxus baccata
- 7 - Oak. Quercus robur
- 8 - Alder. Alnus glutinosa
- 9 - Ash. Fraxinus excelsior
- 10 - Spruce. Picea excelsa
- 11 - White beech. Carpinus betulus
- 12 - Pine. Pinus silvestris
- 13 - Cherry. Prunus avium
- 14 - Larch. Larix decidua
- 15 - Lime. Tilia platyphylla
- 16 - Walnut. Juglans regia
- 17 - Poplar. Populus alba
- 18 - Plane. Platanus orientalis
- 19 - Plum. Prunus domestica
- 20 - Black locust. Robinia pseudacacia
- 21 - Chestnut. Aesculus hippocastanum
- 22 - Beech. Fagus sylvatica
- 23 - Elm. Ulmus scabra
- 24 - Willow. Salix alba
- 25 - Fir. Abies alba

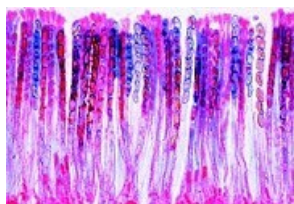
[Cat #: JL-4MM](#)**Textile Fibres and Fabrics Slide Set****25 slides**

- 1- Angora wool
- 2 - Camel-hair
- 3 - Merino wool

- 4 - Mohair
- 5 - European wool
- 6 - Australian wool
- 7 - Cocoon silk, raw
- 8 - Organsin silk
- 9 - Tussah silk
- 10 - Egyptian cotton
- 11 - Mercerized cotton
- 12 - Linen (flax)
- 13 - Jute
- 14 - Italian hemp
- 15 - Ramie
- 16 - Cellulose
- 17 - Cuprama rayon
- 18 - Casein fibre
- 19 - PVC fibre
- 20 - Acetate rayon
- 21 - Viscose rayon
- 22 - Bemberg rayon
- 23 - Perlon
- 24 - Gauze
- 25 - Nylon fabric

Cat #: JL-5MM

Agriculture Parasitic Fungi Slide Set



20 slides

- 1 - Plasmodiophora brassicae, clubroot, host cells with spores
- 2 - Synchytrium endobioticum, potato black scab, infected tissue
- 3 - Plasmopara viticola, downy mildew of grapes, infected leaf
- 4 - Peronospora parasitica, downy mildew of crucifers, conidia
- 5 - Albugo candida (Cystopus), white rust of crucifers, conidia and sexual stages on Capsella t.s.
- 6 - Rhizopus or Mucor, mould, mycelium and sporangia w.m.
- 7 - Exoascus pruni (Taphrina), plum pockets, sec. with asci
- 8 - Erysiphe pannosa, rose mildew, infected leaf with conidia t.s.
- 9 - Uncinula necator (Oidium Tuckeri), grape mildew, t.s.
- 10 - Sphaerotheca mors uvae, gooseberry mildew, perithecia t.s.
- 11 - Claviceps purpurea, ergot stroma with perithecia l.s
- 12 - Sclerotinia fructigena (Monilia), diseased fruit with conidia t.s.
- 13 - Rhytisma acerinum, black spot of maple, t.s. with sclerotia
- 14 - Venturia pirinum (Fusicladium), pear scab, t.s. with conidia
- 15 - Ustilago zaeae, corn smut, t.s. of pustule on host tissue
- 16 - Botrytis allii, grey mould of onions. t.s.
- 17 - Puccinia graminis, uredinia on wheat leaf cause

- red rust t.s.
- 18 - Puccinia graminis, telia on wheat causing black rust t.s.
- 19 - Puccinia graminis, aecia or pycnidia on barberry leaf t.s.
- 20 - Gymnosporangium sabinae, pear rust, pycnidia on leaf t.s.

Cat #: JL-6MM

Agriculture Basic Slide Set

20 slides

- 1 - Plasmodiophora brassicae, clubroot, host cells with spores
- 2 - Synchytrium endobioticum, potato black scab, infected tissue
- 3 - Plasmopara viticola, downy mildew of grapes, infected leaf
- 4 - Albugo candida (Cystopus), white rust of crucifers, conidia and sexual stages on Capsella t.s.
- 5 - Rhizopus or Mucor, mold, mycelium and sporangia w.m.
- 6 - Claviceps purpurea, ergot, sclerotium t.s.
- 7 - Sclerotinia fructigena (Monilia), diseased fruit with conidia t.s.
- 8 - Rhytisma acerinum, black spot of maple, t.s. with sclerotia
- 9 - Venturia pirinum (Fusicladium), pear scab, t.s. with conidia
- 10 - Ustilago zaeae, corn smut, t.s. of pustule on host tissue
- 11 - Root of lupin with symbiotic nitrogen fixing bacteria
- 12 - Puccinia graminis, uredinia on wheat leaf cause red rust t.s.
- 13 - Puccinia graminis, aecia or pycnidia on barberry leaf t.s.
- 14 - Tuberculous lung of cow t.s.
- 15 - Earthworm (Lumbricus) t.s., causing soil improvement
- 16 - Trypanosoma equiperdum, causing dourine in horses, blood smear showing parasites
- 17 - Eimeria stiedae, coccidiosis, sec. of infected rabbit liver
- 18 - Fasciola hepatica, beef liver fluke, ova w.m.
- 19 - Taenia, tapeworm, proglottids t.s.
- 20 - Aphidae, plant lice w.m.

Cat #: JL-7MM

Agriculture Slide Set

66 slides

- 1 - Plasmodiophora brassicae, clubroot, host cells with spores
- 2 - Synchytrium endobioticum, potato black scab, infected tissue
- 3 - Plasmopara viticola, downy mildew of grapes, infected leaf
- 4 - Peronospora parasitica, downy mildew of crucifers, conidia
- 5 - Albugo candida (Cystopus), white rust of crucifers, conidia and sexual stages on Capsella t.s.
- 6 - Rhizopus or Mucor, mold, mycelium and sporangia w.m.
- 7 - Exoascus pruni (Taphrina), plum pockets, sec.

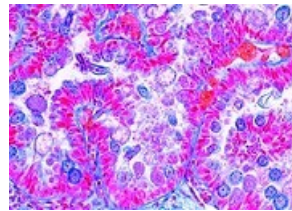
with asci

- 8 - *Erysiphe pannosa*, rose mildew, infected leaf with conidia t.s.
- 9 - *Uncinula necator* (*Oidium Tuckeri*), grape mildew, t.s.
- 10 - *Sphaerotheca mors uvae*, gooseberry mildew, perithecia t.s.
- 11 - *Claviceps purpurea*, ergot, sclerotium t.s.
- 12 - *Sclerotinia fructigena* (*Monilia*), diseased fruit with conidia t.s.
- 13 - *Rhytisma acerinum*, black spot of maple, t.s. with sclerotia
- 14 - *Venturia pirinum* (*Fusicladium*), pear scab, t.s. with conidia
- 15 - *Ustilago zeae*, corn smut, t.s. of pustule on host tissue
- 16 - *Botrytis allii*, grey mold of onions. t.s.
- 17 - *Puccinia graminis*, uredinia on wheat leaf cause red rust t.s.
- 18 - *Puccinia graminis*, telia on wheat causing black rust t.s.
- 19 - *Puccinia graminis*, aecia or pycnidia on barberry leaf t.s.
- 20 - *Gymnosporangium sabinae*, pear rust, pycnidia on leaf t.s.
- 21 - Tuberculous lung of cow t.s.
- 22 - *Bacillus anthracis*, wool sorters disease, smear stained for bacteria
- 23 - *Bacterium erysipelatos*, causing red murrain, smear stained for bacteria
- 24 - *Trypanosoma equiperdum*, causing dourine in horses, blood smear showing parasites
- 25 - *Eimeria stiedae*, coccidiosis, sec. of infected rabbit liver
- 26 - *Fasciola hepatica*, beef liver fluke, ova w.m.
- 27 - *Taenia*, tapeworm, proglottids t.s.
- 28 - *Ascaris megaloccephala*, roundworm of horses, adult female t.s. through midbody
- 29 - *Trichinella spiralis*, encysted larvae in muscle l.s.
- 30 - Pine (*Pinus*), healthy leaves, t.s.
- 31 - Pine (*Pinus*) leaves damaged by acid rain, t.s.
- 32 - Fir (*Abies*), healthy leaves, t.s.
- 33 - Fir (*Abies*), stem tip damaged t.s.
- 34 - Beech (*Fagus*), healthy leaves t.s.
- 35 - Beech (*Fagus*), t.s. of leaves with destroyed epidermis and chloroplasts
- 36 - *Rhytisma acerinum*, tar spot of maples, consequence of single-crop farming
- 37 - Early leaf fall, caused by thawing salt
- 38 - Healthy lichen, indicator of clean air
- 39 - Damaged lichen, caused by air pollution
- 40 - Healthy wood of beech, t.s.
- 41 - Wood destroyed by fungus
- 42 - *Polyporus*, wood rot fungus, fruiting body t.s.
- 43 - Root nodules of *Alnus*, with symbiotic bacteria
- 44 - Spruce beetle (*Cryphalus picea*), larva t.s.
- 45 - Wood with normal annual rings, t.s.
- 46 - Wood with anomalous narrow annual rings caused by drought, t.s.
- 47 - Bark with larval galleries of spruce beetle, t.s.
- 48 - Pineapple-like gall on spruce caused by lice, t.s.
- 49 - Gall nut on oak caused insects, t.s.
- 50 - Acidophile soil bacteria, solution of heavy metals
- 51 - Nitrite bacteria, formatting harmful nitrogenous substances
- 52 - Root of beech with ectotrophic mycorrhiza, t.s.
- 53 - Root of birch with partly endotrophic mycorrhiza, t.s.
- 54 - Root of lupin with symbiotic nitrogen fixing bacteria

- 55 - Netted venation, portion of rotted deciduous leaf
- 56 - Charlock (*Sinapis*), t.s. of stem. Green manure plant
- 57 - Soil bacteria (*Bacillus megatherium*), smear
- 58 - Hyphae of root fungi, t.s.
- 59 - Lichen, indicator of clean air
- 60 - Mushroom (*Xerocomus*), mycelium
- 61 - Root of willow (*Salix*), planting protecting against erosion
- 62 - Earthworm (*Lumbricus*) t.s., causing soil improvement
- 63 - Springtails (*Collembola*), w.m.
- 64 - Mite from forest soil, w.m.
- 65 - Constituents of humus soil
- 66 - Constituents of peaty soil

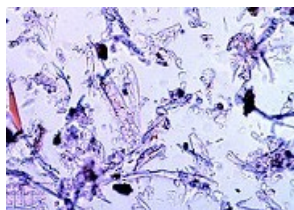
Cat #: JL-8MM

Animals, Parasites, and Pathogens Slide Set

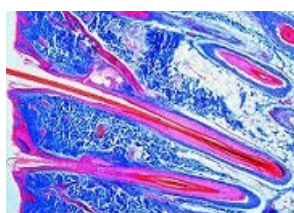


22 slides

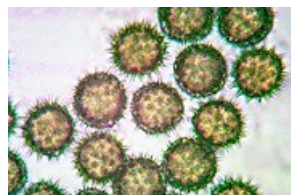
- 1 - Striated muscle of cow l.s.
- 2 - Tendon of cow l.s.
- 3 - Compact bone of cow t.s.
- 4 - Hyaline cartilage from rib of calf t.s.
- 5 - Adipose tissue from pig, stained for fat
- 6 - Liver of pig, t.s.
- 7 - Small intestine of pig t.s.
- 8 - Udder (mammary gland) of cow t.s.
- 9 - Lung of cow t.s.
- 10 - Bristles of pig w.m.
- 11 - Skin of pig, l.s. of hair follicles
- 12 - Tuberculous lung of cow t.s.
- 13 - *Bacillus anthracis*, wool sorters disease, smear stained for bacteria
- 14 - *Bacterium erysipelatos*, causing red murrain, smear stained for bacteria
- 15 - *Trypanosoma equiperdum*, causing dourine in horses, blood smear showing parasites
- 16 - *Eimeria stiedae*, coccidiosis, sec. of infected rabbit liver
- 17 - *Dicrocoelium lanceolatum*, sheep liver fluke, adult stained and w.m.
- 18 - *Fasciola hepatica*, beef liver fluke, ova w.m.
- 19 - *Taenia*, tapeworm, proglottids t.s.
- 20 - *Echinococcus granulosus*, dog tapeworm, scolices from cyst
- 21 - *Ascaris megaloccephala*, roundworm of horses, adult female t.s. through midbody
- 22 - *Trichinella spiralis*, encysted larvae in muscle l.s.

Cat #: JL-9MM**Types of Paper Slide Set****25 slides**

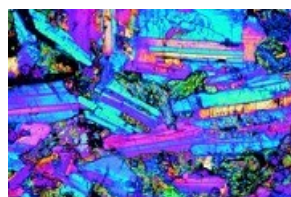
- 1 - Bank paper
- 2 - Book paper, wood-free
- 3 - Mould-made paper, 100 percent rag
- 4 - Chromo paper containing wood pulp
- 5 - Esparto paper
- 6 - Filter paper
- 7 - India paper
- 8 - Rough-surface paper containing sawdust
- 9 - Kraft paper, brown
- 10 - Art paper
- 11 - Copper plate printing paper
- 12 - Blotting paper
- 13 - Standard paper No. 3, rag/pulp
- 14 - Grease-proof paper
- 15 - Sulphate kraft paper
- 16 - Stencil raw silk, 100 percent manila
- 17 - Wrapping paper
- 18 - Counterfeit-proof check paper
- 19 - Sulphite wrapping paper
- 20 - Book printing paper, wood-free
- 21 - Newsprint
- 22 - Wood pulp paper
- 23 - Cigarette paper
- 24 - Straw board
- 25 - Wood pulp board

Cat #: JL-10MM**Human Scalp and Hair Slide Set****12 slides**

- 1 - Human scalp, vertical sec. shows l.s. of hair follicles
- 2 - Human scalp, horizontal sec. shows t.s. of hair follicles
- 3 - Natural blond and black hair
- 4 - Greyed hair
- 5 - Eyelash
- 6 - Hair of beard
- 7 - Hair from infant
- 8 - Artificially bleached hair
- 9 - Split hair tips
- 10 - Singed hair
- 11 - Eggs of louse attached to the hair, w.m.
- 12 - Human head louse (*Pediculus capitis*), w.m.

Cat #: JL-11MM**Herbs and Spices Slide Set****25 slides**

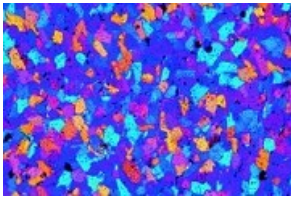
- 1 - *Amylum Oryzae*. Rice starch
- 2 - *Amylum Solani*. Potato starch
- 3 - *Amylum Triticici*. Wheat starch
- 4 - *Cortex Chinae*. Cinchona bark
- 5 - *Cortex Cinnamomi*. Cinnamon
- 6 - *Crocus*. Saffron
- 7 - *Flores Caryophylli*. Clove
- 8 - *Flores Chamomillae*. Camomile
- 9 - *Folia Melissa*. Melissa
- 10 - *Folia Sennae*. Senna leaves
- 11 - *Fructus Anisi*. Aniseed
- 12 - *Fructus Capsici*. Red pepper
- 13 - *Fructus Cardamomi*. Cardamom
- 14 - *Fructus Carvi*. Caraway
- 15 - *Fructus Foeniculi*. Fennel
- 16 - *Fructus Piperis nigri*. Black pepper
- 17 - *Radix Angelicae*. Angelica
- 18 - *Radix Ipecacuanhae*. Ipecac
- 19 - *Radix Liquiritiae*. Liquorice
- 20 - *Radix Saponariae*. Saponaria
- 21 - *Radix Valerianae*. Valerian
- 22 - *Rhizoma Rhei*. Rhubarb
- 23 - *Rhizoma Zingiberis*. Ginger
- 24 - *Semen Lini*. Linseed
- 25 - *Semen Sinapis*. Mustard

Cat #: JL-12MM**Rocks and Minerals Ground Thin Slide Set, 1****10 slides**

- 1 - Granite
- 2 - Syenite
- 3 - Gabbro
- 4 - Basalt
- 5 - Gneiss
- 6 - Mica schist
- 7 - Quartzite
- 8 - Marble
- 9 - Sandstone
- 10 - Limestone fossilized

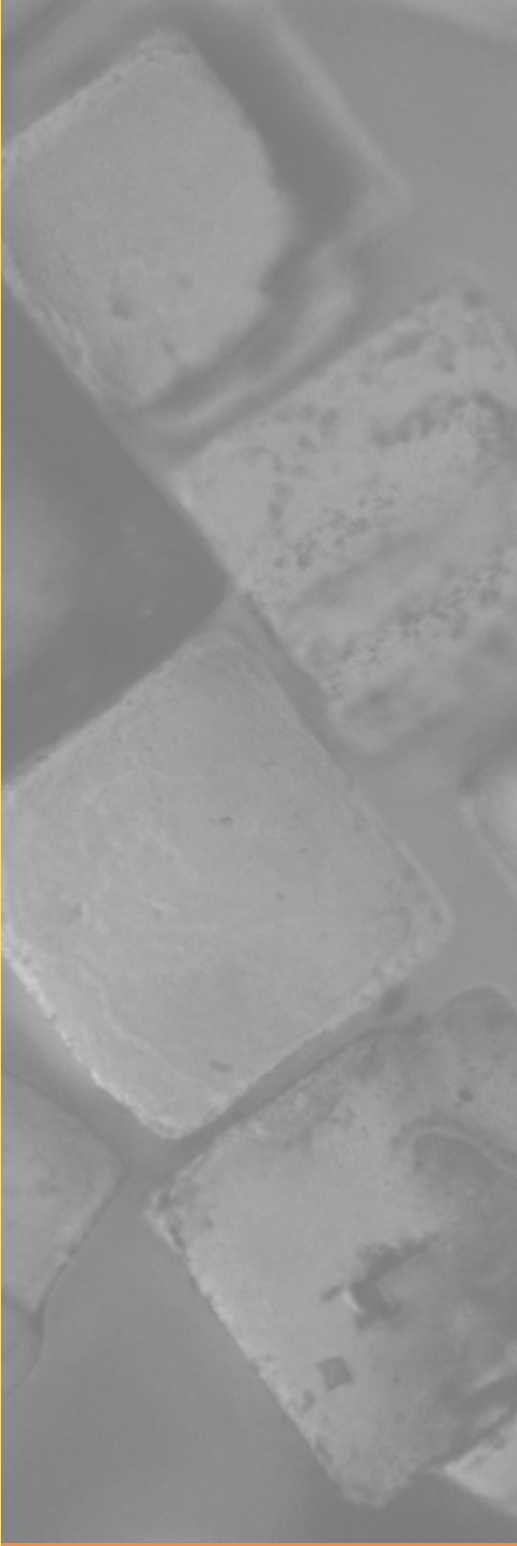
[Cat #: JL-13MM](#)

Rocks and Minerals Ground Thin Slide Set, 2



10 slides

- 1 - Andesite
- 2 - Trachyte
- 3 - Thyolite
- 4 - Diorite
- 5 - Microgranite
- 6 - Chalk
- 7 - Limestone oolitic
- 8 - Millstone
- 9 - Coal
- 10 - Schist



P.O Box 136,

MT DRUITT N.S.W 2770

Australia

Tele: (02) 9675 7750

Fax: (02) 9675 7702

<http://www.msmedia.com.au>