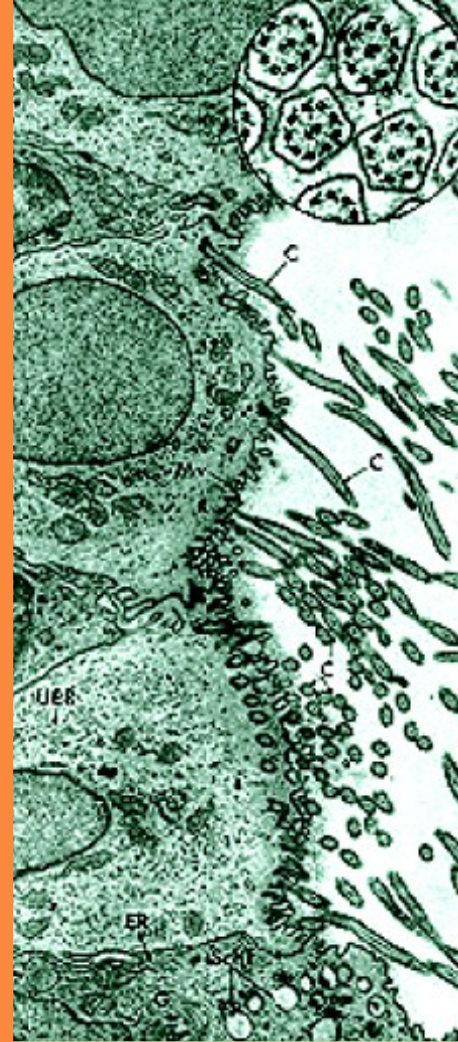


# 2011/12



## MEDICAL & SCIENCE MEDIA

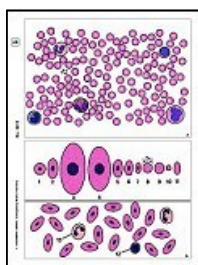
### Media PACKAGES

P.O Box 136,  
MT DRUITT N.S.W 2770 Australia  
Tele: (02) 9675 7750  
Fax: (02) 9675 7702

<http://www.msmedia.com.au/media-packages.php>

**Cat #: JL-1MP**

**Protozoa Media Pack**

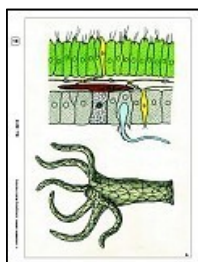


8 Microscope Slides in Plastic Box, 4 OHP Colour Transparencies, 8 Sketch and Worksheets, Brochure with explanatory text - **20 Media Items**

1. Amoeba proteus, showing nucleus and pseudopodia
2. Paramecium, a ciliate found in hay infusions
3. Euglena, a common green flagellate
4. Ceratium, dinoflagellates
5. Vorticella, a stalked ciliate
6. Radiolaria, different forms
7. Monocystis, sporozoa in earthworm seminal vesicle
8. Trypanosoma, blood flagellate causing sleeping sickness, blood smear

**Cat #: JL-2MP**

**Invertebrates Media Pack**



6 Microscope Slides in Plastic Box, 4 OHP Colour Transparencies, 6 Sketch and Worksheets, Brochure with explanatory text - **16 Media Items**

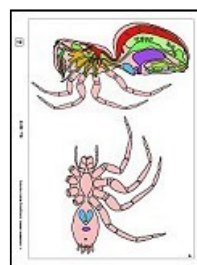
1. Marine sponge (Grantia), t.s.
2. Hydra, freshwater polyp, t.s. of body
3. Earthworm (Lumbricus), t.s. showing intestine, body wall, muscles
4. Water flea (Daphnia), small fresh water crustaceans w.m.
5. Araneus, spider, leg with comb w.m.
6. Starfish (Asterias), arm with tube feet, t.s

**You may also be interested in the microscope slide set Invertebrata Slide Set.** To visit the page click on the following link.

<http://www.msmedia.com.au/invertebrata-slide-set.php>

**Cat #: JL-3MP**

**Invertebrates, Supplementary Media Pack**

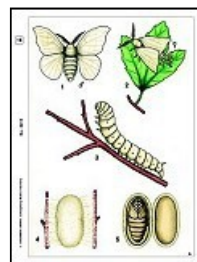


12 Microscope Slides in Plastic Box, 6 OHP Colour Transparencies, 12 Sketch - and Worksheets, Brochure with explanatory text - **30 Media Items**

1. Hydra, fresh-water polyp, w.m.
2. Commercial sponge (Euspongia), skeleton of horny fibres
3. Laomedea, w.m. of colony, vegetative and reproductive polyps
4. Sea Anemone (Actinia), t.s. of the body
5. Planaria, t.s. for general structure
6. Tapeworm (Taenia), proglottid t.s., intestinal parasite
7. Cyclops sp., copepode, w.m.
8. Crayfish (Astacus), intestine, t.s.
9. Dermanyssus gallinae, chicken mite, w.m.
10. Clam (Mya arenaria), gills. t.s.
11. Echinus, young sea urchin, t.s.
12. Amphioxus, Branchiostoma, typical t.s. region of gills and intestine

**Cat #: JL-4MP**

**Insects Media Pack**

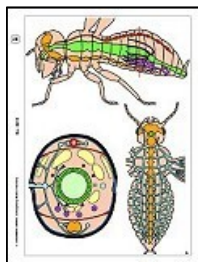


6 Microscope Slides in Plastic Box, 3 OHP Colour Transparencies, 6 Sketch - and Worksheets, Brochure with explanatory text - **15 Media Items**

1. Musca domestica, housefly, leaking-sucking mouth parts w.m.
2. Apis mellifica, honey bee, anterior and posterior wings w.m.
3. Musca domestica, house fly, leg with pulvilli w.m.
4. Pieris, butterfly, portion of wings with scales w.m.
5. Trachea from insect w.m.
6. Spiracle from insect w.m.

**Cat #: JL-5MP**

**Insects, Supplementary Media Pack**

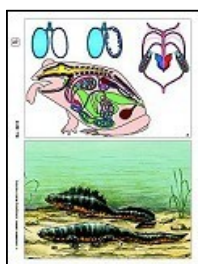


12 Microscope Slides in Plastic Box, 6 OHP Colour Transparencies, 12 Sketch and Worksheets, Brochure with explanatory text., Supplementary Pack - **30 Media Items**

1. Culex pipiens, mosquito, piercing sucking mouth parts w.m
2. Apis mellifica, posterior leg with pollen basket w.m.
3. Drosophila, fruit fly, w.m. of adult
4. Culex pipiens, mosquito, w.m. of larva
5. Apis mellifica, honey bee, mouth parts of worker t.s.
6. Pieris, butterfly, clubbed antenna w.m.
7. Aphidae, plant lice adults and larvae w.m.
8. Pieris, butterfly, walking leg w.m.
9. Apis mellifica, honey bee, sting and poison sac w.m.
10. Musca domestica. house fly, wing w.m.
11. Drosophila, fruit fly, sagittal l.s. for general insect anatomy
12. Apis mellifica, head with compound eyes and brain t.s.

**Cat #: JL-6MP**

**Frog Histology Media Pack**

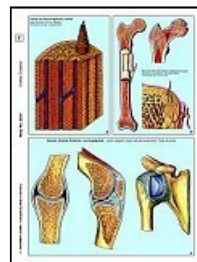


12 Microscope Slides in Plastic Box, 6 OHP Colour Transparencies, 12 Sketch and Worksheets, Brochure with explanatory text - **30 Media Items**

1. Frog, simple sac-like lung t.s.
2. Frog, blood smear, shows nucleated red corpuscles
3. Frog, stomach t.s., glandular epithelium
4. Frog, small intestine t.s., folds
5. Frog, large intestine (colon) t.s., goblet cells
6. Frog, liver t.s., showing liver parenchyma cells
7. Frog, ovary t.s. shows follicle development, yolk
8. Frog, testis t.s. showing spermatogenesis
9. Frog, heart l.s. of the entire organ
10. Frog, tongue t.s., papillae, glands, muscles
11. Frog, skin t.s., skin glands, epidermis, pigment cells
12. Frog, brain t.s. showing nerve cells.

**Cat #: JL-7MP**

**Animal Cytology Media Pack**

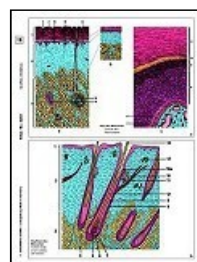


6 Microscope Slides in Plastic Box, 3 OHP Colour Transparencies, 6 Sketch and Worksheets, Brochure with explanatory text - **15 Media Items**

1. Simple animal cells in t.s. of salamander liver
2. Squamous epithelial cells from cheek
3. Nerve cells and fibers
4. Bone cells, t.s. of compact bone
5. Striated muscle cells, l.s. of skeletal muscle
6. Blood cells, smear of human blood with red and white corpuscles

**Cat #: JL-8MP**

**Human and Animal Histology Media Pack**



6 Microscope Slides in Plastic Box, 3 OHP Colour Transparencies, 6 Sketch and Worksheets, Brochure with explanatory text - **15 Media Items**

1. Squamous epithelium, isolated cells
2. Hyaline cartilage of calf, t.s.
3. Compact bone of cow, t.s.
4. Striated muscles of cat, l.s.
5. Smooth muscles of cat, t.s. and l.s.
6. Blood, human, Giemsa or Wright stained smear

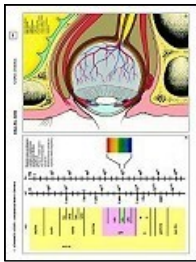
**You may also be interested in the microscope slide set Normal Human Histology Slide Set.**

To visit the page click on the following link.

<http://www.msmedia.com.au/normal-human-histology-slide-set.php>

**Cat #: JL-9MP**

**Human and Animal  
Histology, Supplementary Media Pack 1**

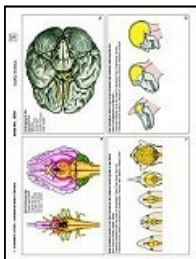


12 Microscope Slides in Plastic Box, 6 OHP Colour Transparencies, 12 Sketch and Worksheets, Brochure with explanatory text - **30 Media Items**

1. Columnar epithelium, human gall bladder, t.s
2. Elastic cartilage, ear, t.s. Elastic tissue stain
3. Skin, human, from palm, t.s. showing sweat glands
4. Lung, human t.s. showing alveoli
5. Heart muscle, t.s. and l.s., striations, intercalated discs
6. Stomach of cat, fundic region, t.s.
7. Kidney, cat, t.s. showing cortex and medulla
8. Testis, rabbit, t.s. showing spermatogenesis
9. Ovary, rabbit, t.s. follicle development
10. Cerebrum, human, cortex, t.s.
11. Spinal cord, cat, t.s. for general structure
12. Tongue, rabbit, t.s., papillae with taste buds

**Cat #: JL-10MP**

**Human and Animal  
Histology, Supplementary Media Pack 2**

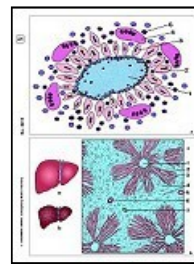


12 Microscope Slides in Plastic Box, 6 OHP Colour Transparencies, 12 Sketch and Worksheets, Brochure with explanatory text - **30 Media Items**

1. Ciliated epithelium, trachea, t.s.
2. Adipose tissue, t.s.
3. Bone development (intracartilaginous), l.s. of foetal finger
4. White fibrous tissue of cow, l.s. of tendon
5. Artery, human, t.s., elastica stained
6. Vein, human, t.s., elastica stained
7. Small intestine of cat, t.s. stained for goblet cells
8. Pancreas, human, t.s. with islets of Langerhans
9. Liver of pig, t.s.
10. Cerebellum, human, t.s.
11. Thyroid gland of cow, t.s
12. Mammary gland of cow, t.s. active stage

**Cat #: JL-11MP**

**Human Pathology Media Pack**



6 Microscope Slides in Plastic Box, 3 OHP Colour Transparencies, 6 Sketch and Worksheets, Brochure with explanatory text - **15 Media Items**

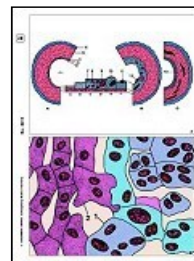
1. Tuberculosis of the lung, t.s. with bacterial foci
2. Anthracosis of lung (smoker 's lung)
3. Struma of thyroid gland (Goitre)
4. Acute hemorrhagic nephritis (Kidney)
5. Cirrhosis of liver, t.s. (abuse of alcohol)
6. Eberthella typhi (typhoid fever), smear

**Also available Human Pathology Microscope Slide Sets.** To visit the page click on the following link.

<http://www.msmedia.com.au/human-pathology.php>

**Cat #: JL-12MP**

**Human Pathology Supplementary Media Pack**

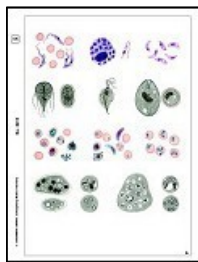


12 Microscope Slides in Plastic Box, 6 OHP Colour Transparencies, 12 Sketch and Worksheets, Brochure with explanatory text - **30 Media Items**

1. Miliary tuberculosis of liver
2. Influenzal pneumonia
3. Spindle cell sarcoma
4. Carcinoma of liver (primary)
5. Hypertrophy of prostate
6. Adiposis of heart
7. Icterus hepatis
8. Myoma of uterus
9. Carcinoma of uterus
10. Malaria parasites in blood (Plasmodium), smear
11. Sleeping disease of humans, blood smear with flagellates (Trypanosoma)
12. Pus bacteria, smear showing cocci in irregular balls

**Cat #: JL-13MP**

**Parasites of Man and Animals Media Pack**



6 Microscope Slides in Plastic Box, 3 OHP Colour Transparencies, 6 Sketch and Worksheets, Brochure with explanatory text - **15 Media Items**

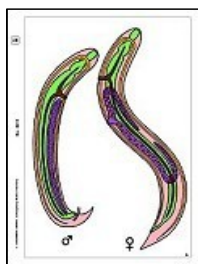
1. Trypanosoma, blood flagellate causing sleeping sickness, blood smear
2. Plasmodium falciparum, causing malaria tropica, human blood smear
3. Taenia, tapeworm, proglottids in different stages t.s
4. Ascaris lumbricoides, roundworm of human, adult female t.s. in region of gonads.
5. Trichinella spiralis, t.s. of infected muscle with larvae
6. Fasciola hepatica, beef liver fluke, t.s. of the body

**Also available Parasitology Microscope Slide Sets.** To visit the page click on the following link.

<http://www.msmedia.com.au/bacteriology-parasitology.php>

**Cat #: JL-14MP**

**Parasites of Man and Animals, Supplementary Media Pack**



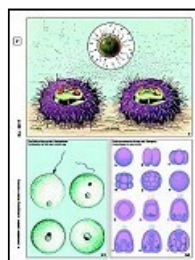
12 Microscope Slides in Plastic Box, 6 OHP Colour Transparencies, 12 Sketch and Worksheets, Brochure with explanatory text - **30 Media Items**

1. Entamoeba histolytica, smear or section
2. Eimeria stiedae, coccidiosis in rabbit liver, t.s.
3. Monocystis, from earthworm seminal vesicle
4. Fasciola hepatica, beef liver fluke, w.m.
5. Taenia pisiformis, tapeworm, mature proglottids w.m.
6. Enterobius vermicularis (Oxyuris), pin worm, w.m.
7. Echinococcus granulosus, dog tapeworm, cyst wall and scolices sec.
8. Dermanyssus, chicken mite w.m.
9. Anopheles, malaria mosquito, mouth parts of female w.m.
10. Culex pipiens, common mosquito, mouth parts of female w.m.

11. Pediculus humanus, human louse, w.m.
12. Ctenocephalus canis, dog flea, adult w.m.

**Cat #: JL-15MP**

**Reproduction of Animals Media Pack**

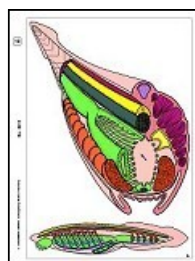


6 Microscope Slides in Plastic Box, 3 OHP Colour Transparencies, 6 Sketch and Worksheets, Brochure with explanatory text - **15 Media Items**

1. Mitotic (division) stages in red bone marrow of mammal t.s.
2. Meiotic (maturation) stages in testis of mouse t.s.
3. Sea-urchin development, first cleavage stages of egg cells, w.m.
4. Growing egg and yolk cells in ovary of bird, t.s.
5. Ovary of rabbit or other mammal showing oogenesis, t.s.
6. Sperm smear of bull showing w.m. of spermatozoa

**Cat #: JL-16MP**

**Embryology and Development of Animals Media Pack**

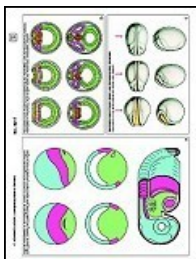


6 Microscope Slides in Plastic Box, 3 OHP Colour Transparencies, 6 Sketch and Worksheets, Brochure with explanatory text - **15 Media Items**

1. Frog, early tail bud stage, t.s. with neural tube, notochord
2. Frog, young tadpole, t.s. through head
3. Chicken, 36 hour, t.s. with neural tube, differentiation of mesoderm
4. Chicken, 48 hour, t.s. with differentiation of mesoderm and ectoderm
5. Chicken, 3 day, t.s. of head with primordium of brain, eyes and heart
6. Mouse embryo, t.s. of head, development of hairs, brain, etc.

**Cat #: JL-17MP**

**Embryology and Development of Animals, Supplementary Media Pack**

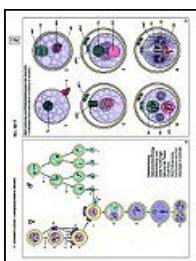


12 Microscope Slides in Plastic Box, 6 OHP Colour Transparencies, 12 Sketch and Worksheets, Brochure with explanatory text - **30 Media Items**

1. Vinegar eels (*Anguillula*), various stages w.m.
2. *Ascaris megalocephala*, first and second maturation divisions in oocytes
3. *Ascaris*, oocytes with male and female pronuclei
4. Mosquito (*Culex*), larva of insect, w.m.
5. Frog, hatching stage, t.s. region of midbody
6. Frog, young tadpole, t.s. thorax
7. Frog, young tadpole, t.s. of abdomen
8. Chicken, 3 day, t.s. through body showing amnion and serosa.
9. Chicken, 4-5 day, t.s. through region of heart shows heart, lungs, vertebrae, spinal cord
10. Chicken, feather development, sec. of wings
11. Mouse embryo, t.s. of body
12. Pig embryo, 11-12 mm, typical t.s. region of abdomen

**Cat #: JL-18MP**

**Genetics Media Pack**

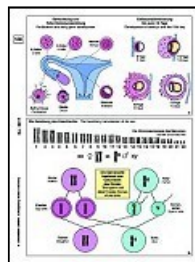


6 Microscope Slides in Plastic Box, 3 OHP Colour Transparencies, 6 Sketch and Worksheets, Brochure with explanatory text - **15 Media Items**

1. *Allium cepa*, onion, root tips, l.s. showing all stages of mitosis
2. Chromosomes, human, of culture of peripheral blood smear preparation
3. Sea urchin, developing of eggs, w.m. of most stages up to pluteus in the same slide
4. *Ascaris megalocephala*, male and female pronuclei, sec.
5. Testis of rabbit, t.s. showing spermatogenesis in all stages
6. *Spirogyra*, scalariform conjugation showing zygotes following conjugation

**Cat #: JL-19MP**

**Genetics, Supplementary Media Pack**

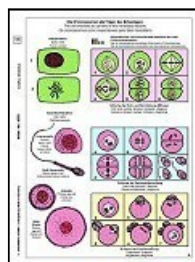


12 Microscope Slides in Plastic Box, 6 OHP Colour Transparencies, 12 Sketch and Worksheets, Brochure with explanatory text - **30 Media Items**

1. *Allium*, root tips, t.s. showing polar view of mitosis, iron-hematoxyline
2. Ovary of rabbit, l.s. follicles in various stages of development
3. *Lilium*, microspore mother cells, prophase stages t.s.
4. *Paramecium*, from mass culture showing stages of binary division
5. *Rhizopus* or *Mucor*, mould, formation of zygosporangia w.m.
6. *Mnium*, moss, archegonium, l.s.
7. *Mnium*, moss, antheridium, l.s.
8. *Pinus*, young female cone at time of pollination, l.s.
9. *Pinus*, male cone with pollen l.s.
10. *Lilium*, stigma, l.s. showing penetrating pollen grains
11. *Drosophila* genetics, adult wild type, w.m.
12. *Drosophila* genetics, "barr eye" mutant, w.m.

**Cat #: JL-20MP**

**Mitosis and Meiosis Media Pack**

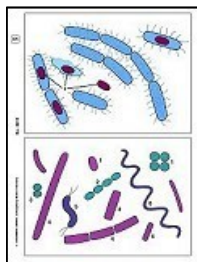


6 Microscope Slides in Plastic Box, 3 OHP Colour Transparencies, 6 Sketch and Worksheets, Brochure with explanatory text - **15 Media Items**

1. *Allium*, root tips, l.s. showing lateral view of all stages of mitosis, iron-hematoxyline
2. Whitefish mitosis, l.s. of embryo showing animal mitosis
3. Testis of mouse, t.s. showing spermatogenesis in all stages
4. Giant chromosomes from salivary gland of *Chironomus*, squash preparation special stained for chromomeres
5. *Lilium*, microspore mother cells, prophase of first division showing meiosis
6. *Lilium*, microspore mother cells, meta- or anaphase of first division, showing mitosis

[Cat #: JL-21MP](#)

**Bacteria Media Pack**

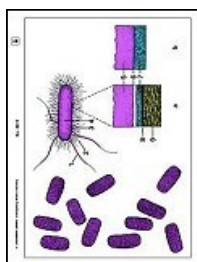


6 Microscope Slides in Plastic Box, 3 OHP Colour Transparencies, 6 Sketch and Worksheets, Brochure with explanatory text, Special cardboard box - **15 Media Items**

1. Bacteria from mouth, smear with Gram positive and negative rods
2. Typical bacteria: three smears on one slide, cocci, bacteria and spirilli are shown, carefully stained
3. Staphylococcus aureus, pus organism
4. Bacillus subtilis, hay bacillus, smear with bacilli and spores
5. Escherichia coli, colon bacteria
6. Spirillum volutans, large species from putrid water

[Cat #: JL-22MP](#)

**Bacteria, Supplementary Media Pack**

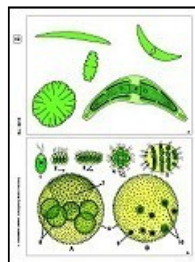


12 Microscope Slides in Plastic Box, 6 OHP Colour Transparencies, 12 Sketch and Worksheets, Brochure with explanatory text, Special cardboard box - **30 Media Items**

1. Streptococcus pyogenes, pus organism
2. Sarcina lutea, chromogenic rods occurring in item sets
3. Streptococcus lactis, milk souring organism, short chains
4. Mycobacterium tuberculosis, causing tuberculosis
5. Corynebacterium diphtheriae, causing diphtheria
6. Rhizobium radicicola, nitrogen fixing bacteria in root nodules
7. Proteus vulgaris, putrefaction
8. Eberthella typhi, causing typhoid fever
9. Clostridium botulinum (botulism), causing food poisoning, smear
10. Acetobacter aceti, manufacture of vinegar, smear
11. Salmonella enteritidis, causes meat poisoning, smear
12. Rhodospirillum rubrum, chromogenic spirilli

[Cat #: JL-23MP](#)

**Algae Media Pack**

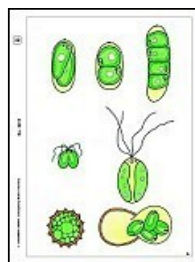


6 Microscope Slides in Plastic Box, 3 OHP Colour Transparencies, 6 Sketch and Worksheets, Brochure with explanatory text. - **15 Media Items**

1. Nostoc, blue-green alga with heterocysts
2. Diatoms, fresh water, recent, mixed species
3. Spirogyra, vegetative filaments with spiral chloroplasts, w.m.
4. Cladophora sp., branching filaments with multinucleate cells
5. Chlamydomonas, biflagellate cells, w.m.
6. Desmids, strewn slide showing several selected forms

[Cat #: JL-24MP](#)

**Algae, Supplementary Media Pack**

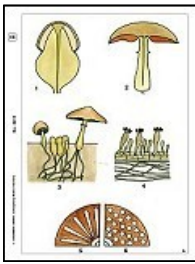


12 Microscope Slides in Plastic Box, 6 OHP Colour Transparencies, 12 Sketch and Worksheets, Brochure with explanatory text - **30 Media Items**

1. Chroococcus, a single-cell alga, w.m.
2. Oscillatoria, a blue-green filamentous alga w.m.
3. Microcystis, irregular colonies w.m.
4. Draparnaldia, main filaments and clusters of branches w.m.
5. Hydrodictyon, water net, w.m.
6. Oedogonium, a filamentous green alga with vegetative and sexual stages
7. Volvox, spherical colonies with daughter colonies and sexual stages w.m.
8. Dinobryon, a golden alga forming colonies w.m.
9. Pleurococcus (Protococcus), small colonies growing on bark, w.m.
10. Laminaria saccharina, thallus with sporangia, c.t.
11. Fucus vesiculosus, seaweed, male conceptacle with antheridia, t.s.
12. Fucus vesiculosus, female conceptacle with oogonia t.s.

[Cat #: JL-25MP](#)

**Cryptogams Media Pack**

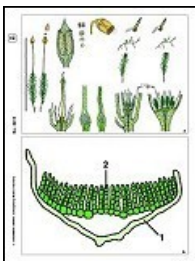


12 Microscope Slides in Plastic Box, 6 OHP Colour Transparencies, 12 Sketch and Worksheets, Brochure with explanatory text - **30 Media Items**

1. Oscillatoria, blue green alga
2. Spirogyra sp., vegetative filaments w.m.
3. Mucor, black mould, mycelium and sporangia
4. Peziza, apothecium with asci t.s.
5. Saccharomyces, yeast, budding cells
6. Coprinus, mushroom, t.s. showing typical basidia and spores
7. Moss stem with leaves w.m.
8. Marchantia, liverwort, archegonia l.s.
9. Marchantia, liverwort, antheridia l.s.
10. Equisetum, horsetail, strobilus with spores l.s.
11. Pteridium, bracken fern, t.s. of rhizome
12. Aspidium (Dryopteris), fern, leaflet with sporangia and spores t.s.

[Cat #: JL-26MP](#)

**Cryptogams, Supplementary Media Pack**

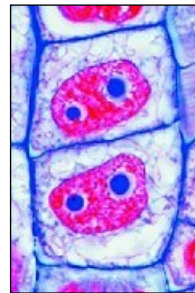


12 Microscope Slides in Plastic Box, 6 OHP Colour Transparencies, 12 Sketch and Worksheets, Brochure with explanatory text - **30 Media Items**

1. Nostoc, blue green alga with heterocysts
2. Diatoms, mixed species
3. Albugo candida, white rust of crucifers, t.s.
4. Penicillium, blue mold, mycelium and conidiophores
5. Puccinia graminis, wheat rust, uredinia on wheat t.s.
6. Psalliota, gill fungus, pileus with lamellae t.s
7. Claviceps purpurea, ergot, stroma with perithecia l.s.
8. Physcia, sec. through thallus of a typical lichen showing the fungus and the embedded algae
9. Polytrichum, moss, capsule with spores t.s.
10. Equisetum, horse tail, spores with elaters w.m.
11. Lycopodium, clubmoss, sporophyll with spores l.s.
12. Fern prothallium w.m.

[Cat #: JL-27MP](#)

**The Plant Cell Media Pack**

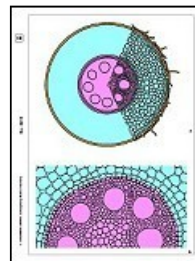


6 Microscope Slides in Plastic Box, 3 OHP Colour Transparencies, 6 Sketch and Worksheets, Brochure with explanatory text - **15 Media Items**

1. Epidermis of Allium cepa (onion), w.m. showing simple plant cells with cell walls, nuclei and cytoplasm
2. Fruit of Pyrus (pear) t.s. showing stone cells (sclerenchyma cells)
3. Tuber of Solanum (potato) t.s. shows cork and starch grains
4. Cucurbita pepo (pumpkin) l.s. of stem showing vascular bundles with sieve tubes, spiral and annular vessels, sclerenchyma fibres
5. Anthers of Lilium (lily), t.s. showing pollen sacs and pollen grains
6. Ovary of Lilium (lily), t.s. showing arrangement of ovules and embryosac

[Cat #: JL-28MP](#)

**Typical Roots of Phanerogams Media Pack**

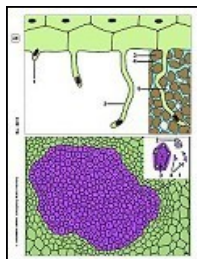


6 Microscope Slides in Plastic Box, 3 OHP Colour Transparencies, 6 Sketch and Worksheets, Brochure with explanatory text - **15 Media Items**

1. Zea mays, corn, typical monocot root t.s.
2. Ranunculus, buttercup, typical dicot root t.s.
3. Root tip and root hairs, t.s. to show epidermal origin of root hairs
4. Smilax, carrion flower, t.s. of root shows thickened endodermis
5. Elodea, Canadian waterweed, t.s. of an aquatic root
6. Lupinus, root nodules with nitrogen fixing bacteria (Rhizobium radiclecola) t.s.

**Cat #: JL-29MP**

**Typical Roots of Phanerogams, Supplementary Media Pack**

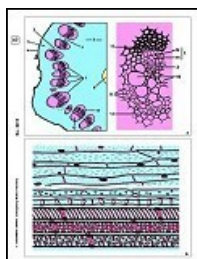


12 Microscope Slides in Plastic Box, 6 OHP Colour Transparencies, 12 Sketch and Worksheets, Brochure with explanatory text - **30 Media Items**

1. Herbaceous and woody roots, two t.s. on one slide
2. Young (primary) and older (secondary) roots, two t.s. on one slide
3. Salix, willow, l.s. of root showing origin of lateral roots
4. Iris, typical monocot root t.s.
5. Medicago, alfalfa, root t.s. showing secondary growth
6. Tilia, lime, older woody root t.s.
7. Monstera, aerial root t.s.
8. Taraxacum, dandelion, taproot with lactiferous vessels t.s.
9. Fagus, beech, root with ectotrophic mycorrhiza, t.s.
10. Neottia nidus avis, orchid, root with endotrophic mycorrhiza, l.s.
11. Cuscuta, dodder, t.s. through stem of host showing the haustoria of the parasite
12. Pinus, older woody root t.s.

**Cat #: JL-30MP**

**Typical Stems of Phanerogams Media Pack**

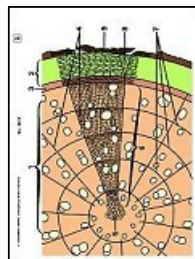


6 Microscope Slides in Plastic Box, 3 OHP Colour Transparencies, 6 Sketch- and Worksheets, Brochure with explanatory text - **15 Media Items**

1. Zea mays, typical monocot stem with scattered bundles, t.s., a standard slide for general study
2. Helianthus, sunflower, typical dicot herbaceous stem t.s. showing open vascular bundles
3. Cucurbita, pumpkin, l.s. of stem with sieve tubes and vascular bundles
4. Triticum, wheat, t.s. through the stem of a gramineous plant
5. Elodea, waterweed, t.s. of aquatic stem showing primitive bundle
6. Convallaria, lily of the valley, t.s. of rhizome with concentric vascular bundles

**Cat #: JL-31MP**

**Typical Stems of Phanerogams, Supplementary Media Pack**



12 Microscope Slides in Plastic Box, 6 OHP Colour Transparencies, 12 Sketch and Worksheets, Brochure with explanatory text - **30 Media Items**

1. Aristolochia, one year stem t.s. for general study
2. Aristolochia, older stem t.s.
3. Fagus, beech, three sections of wood: t.s., r.l.s., t.l.s.
4. Tilia, lime, older woody stem with annual rings, t.s.
5. Nymphaea, water lily, aquatic stem with idioblasts t.s.
6. Potamogeton, pondweed, stem with aerial chambers t.s.
7. Opuntia, cactus, succulent stem t.s.
8. Ranunculus, buttercup, t.s. stem with open vascular bundles
9. Coleus, t.s. of a square stem showing collenchyma clearly
10. Heder helix, ivy, stem with crystals t.s.
11. Clematis, young hexagonal stem t.s., collenchyma
12. Solanum tuberosum, potato, t.s. of tuber with starch grains

**Cat #: JL-32MP**

**Typical Leaves of Phanerogams Media Pack**



6 Microscope Slides in Plastic Box, 3 OHP Colour Transparencies, 6 Sketch and Worksheets, Brochure with explanatory text - **15 Media Items**

1. Zea mays, corn, monocot gramineous leaf t.s.
2. Syringa, lilac, t.s. of a typical mesophytic dicot leaf for general study
3. Tulipa, tulip, leaf epidermis w.m., showing stomata and guard cells
4. Elodea, t.s. of leaf showing the simple structure of an aquatic leaf
5. Nerium, oleander, leaf with sunken stomata t.s., showing the typical structures of a xerophytic leaf
6. Pinus, leaves (needles), t.s. for general study of gymnosperm leaves

**Cat #: JL-33MP**

**Typical Leaves of Phanerogams, Supplementary Media Pack**



12 Microscope Slides in Plastic Box, 6 OHP Colour Transparencies, 12 Sketch and Worksheets, Brochure with explanatory text - **30 Media Items**

1. Iris, typical isobilateral leaf t.s.
2. Poa annua, meadow grass, leaf t.s.
3. Ligustrum, privet, t.s. of dicot leaf
4. Helleborus, t.s. of a typical mesophytic dicot leaf for general study
5. Ficus elastica, India rubber plant, leaf with cystoliths t.s.
6. Nymphaea, water lily, floating leaf of an aquatic plant with air chambers t.s.
7. Potamogeton, pondweed, leaf t.s.
8. Calluna, ling, revolute leaves t.s.
9. Verbascum, mullein, branched leaf hairs w.m.
10. Dionaea, Venus flytrap, t.s. of leaf with digestive glands
11. Drosera, sundew, leaf with glandular hairs, t.s.
12. Fagus, beech, leaf bud t.s. showing leaf development

**Cat #: JL-34MP**

**Flowers and Fruits Media Pack**

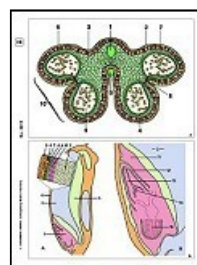


6 Microscope Slides in Plastic Box, 3 OHP Colour Transparencies, 6 Sketch and Worksheets, Brochure with explanatory text - **15 Media Items**

1. Lilium candidum, lily, t.s. of flower bud showing floral diagram of a monocot
2. Lycopersicum, tomato, t.s. of flower bud shows floral diagram of a dicot
3. Lilium, anther t.s. showing pollen chambers and pollen grains
4. Lilium, ovary t.s., showing arrangement of ovules
5. Capsella bursa pastoris, shepherd's purse, l.s. of ovule with embryos
6. Triticum, wheat, grain (seed), t.s. showing embryo and endosperm

**Cat #: JL-35MP**

**Flowers and Fruits, Supplementary Media Pack**

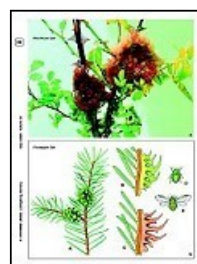


12 Microscope Slides in Plastic Box, 6 OHP Colour Transparencies, 12 Sketch and Worksheets, Brochure with explanatory text - **30 Media Items**

1. Lilium, l.s. of stigma with pollen and pollen tubes
2. Monotropa, Indian pipe, ovary t.s. with developing embryosacs
3. Papaver, poppy, t.s. of flower shows parietal placentation
4. Solanum tuberosum, potato, t.s. flower bud for floral diagram
5. Taraxacum, dandelion, l.s. of composite flower
6. Cocos nucifera, coconut, endosperm t.s.
7. Citrus, lemon, young fruit t.s.
8. Lycopersicum, tomato, young fruit t.s.
9. Pyrus malus, apple, young pome t.s., a fleshy, many seeded fruit
10. Mixed pollen types, many different species
11. Pinus, ovule l.s. showing archegonia, for general study
12. Pinus, male cone with pollen l.s.

**Cat #: JL-36MP**

**Varieties of Wood Media Pack**



6 Microscope Slides in Plastic Box, 3 OHP Colour Transparencies, 6 Sketch and Worksheets, Brochure with explanatory text - **15 Media Items**

1. Maple. Acer platanoides, three sections of wood
2. Beech. Fagus silvatica, three sections of wood
3. Pine. Pinus silvestris, three sections of wood
4. Spruce. Picea excelsa, three sections of wood
5. Poplar. Populus alba, three sections of wood
6. Lime. Tilia platyphylla, three sections of wood

Cat #: JL-37MP

**Textile Fibres, Hair and Fur Media Pack**



6 Microscope Slides in Plastic Box, 3 OHP Colour Transparencies, 6 Sketch and Worksheets, Brochure with explanatory text - **15 Media Items**

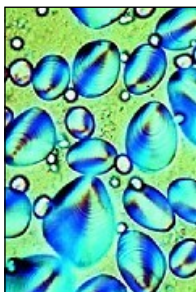
1. Merino wool
2. Cocoon silk, raw
3. Linen (flax)
4. American cotton
5. Cellulose fibers
6. Nylon fabric

**You may also be interested in the microscope slide set Human Scalp & Hair.** To visit the page click on the following link.

<http://www.msmedia.com.au/human-scalp-and-hair-slide-set.php>

Cat #: JL-38MP

**Food and It's Adulteration Media Pack**



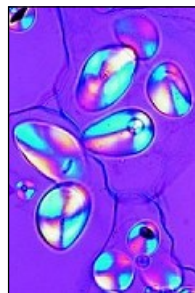
6 Microscope Slides in Plastic Box, 3 OHP Colour Transparencies, 6 Sketch and Worksheets, Brochure with explanatory text - **15 Media Items**

1. Mould in spoiled foodstuffs
2. Sour milk, stained for bacteria
3. Wheat flour adulterated with chalk
4. Corn flour spoiled with spores of corn smut (Ustilago)
5. Rye flour spoiled with moths
6. Flour spoiled with mites (Tyroglyphus farinae)

Cat #: JL-39MP

**Foods and Spices**

**Under the Microscope Media Pack**



12 Microscope Slides in Plastic Box, 6 OHP Colour Transparencies, 12 Sketch and Worksheets, Brochure with explanatory text - **30 Media Items**

1. Rye flour
2. Potato starch
3. Soya meal
4. Wheat flour
5. Rice starch
6. Coffee bean t.s.
7. Black pepper, ground
8. Paprika, ground
9. Nutmeg t.s.
10. Cocoa powder
11. Tobacco, leaves t.s.
12. Hazelnut, t.s. stained for fat

**You may also be interested in the microscope slide set Herbs and Spices.** To visit the page click on the following link.

<http://www.msmedia.com.au/herbs-and-spices-slide-set.php>

Cat #: JL-40MP

**The Wonderful**

**World in a Drop of Water Media Pack**

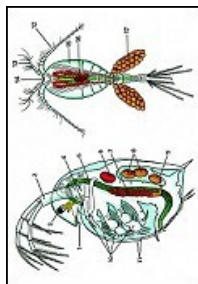


6 Microscope Slides in Plastic Box, 3 OHP Colour Transparencies, 6 Sketch and Worksheets, Brochure with explanatory text - **15 Media Items**

1. Euglena, green flagellate with eyespot
2. Paramecium, nuclei stained
3. Daphnia and Cyclops, small crustaceans
4. Spirogyra, green alga with spiral chloroplasts
5. Spongilla, fresh water sponge, isolated spicules
6. Diatomeae, diatoms, mixed species

**Cat #: JL-41MP**

**The Wonderful World in a Drop of Water, Supplementary Media Pack**



12 Microscope Slides in Plastic Box, 6 OHP Colour Transparencies, 12 Sketch and Worksheets, Brochure with explanatory text - **30 Media Items**

1. Ceratium hirundinella, dinoflagellates
2. Vorticella, a stalked ciliate
3. Putrefaction causing bacteria from hay infusions
4. Hydra, fresh water polyp, t.s. of the body
5. Cladophora, green alga, branched filaments
6. Eudorina, small colonies within gelatinous sheaths
7. Microcystis, irregular colonies
8. Rotatoria, rotifers, mixed species
9. Planaria, fresh water flat worm, t.s. of body
10. Plumatella, moss animal, section of colony
11. Tubifex, a fresh water oligochaete
12. Mixed plankton, strewn slide

**Cat #: JL-42MP**

**Identifying Polluted Water Under the Microscope Media Pack**

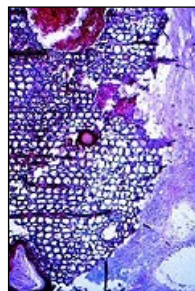


6 Microscope Slides in Plastic Box, 3 OHP Colour Transparencies, 6 Sketch and Worksheets, Brochure with explanatory text - **15 Media Items**

1. Intestinal bacteria (Escherichia coli) from putrid water
2. Putrefactive bacteria (Spirillum) from sludge poor in oxygen
3. Sludge bacteria (Methanobacterium) causing sewer gas
4. Wasserbluthe (Microcystis), blue-green alga "blooming" in stagnant water
5. Ciliates, different species from nutrient rich water
6. Water mould (Saprolegnia), harmful to plants and animals

**Cat #: JL-43MP**

**Air Pollution and Allergens Media Pack**



6 Microscope Slides in Plastic Box, 3 OHP Colour Transparencies, 6 Sketch and Worksheets, Brochure with explanatory text - **15 Media Items**

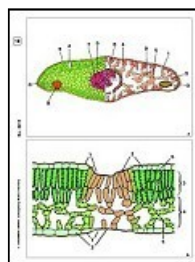
1. Pollen grains of different kinds of grass
2. Pollen grains of different kinds of conifers
3. Mixed house dust (causing allergens)
4. Asbestos powder (cancerogenous)
5. Dust mite from a living room
6. Spores of different fungi

**You may also be interested in the microscope slide set The Woods Consequences of Environmental Pollution.** To visit the page click on the following link.

<http://www.msmedia.com.au/the-woods-consequences-of-environmental-pollution-slide-set.php>

**Cat #: JL-44MP**

**Animals and Plants Damaged by Environmental Influences Media Pack**

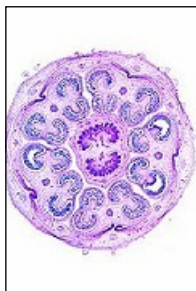


8 Microscope Slides in Plastic Box, 4 OHP Colour Transparencies, 8 Sketch and Worksheets, Brochure with explanatory text - **20 Media Items**

1. Skin of fish injured by chemicals, t.s.
2. Skin ulcer of an amphibian, t.s.
3. Human lung injured with dust particles, t.s.
4. Gall nut on oak caused by insects, t.s.
5. Beech (Fagus), t.s. of leaves with destroyed epidermis and chloroplasts
6. Damaged lichen, caused by air pollution
7. Wood with anomalous narrow annual rings caused by drought, t.s.
8. Wood destroyed by fungus

[Cat #: JL-45MP](#)

### Anatomy of Phanerogams Media Pack



12 Microscope Slides in Plastic Box, 6 OHP Colour Transparencies, 12 Sketch and Worksheets, Brochure with explanatory text - **30 Media Items**

1. Zea mays, corn, monocot root t.s.
2. Ranunculus, buttercup, dicot root t.s.
3. Root tip and root hairs, t.s. epidermal origin of root hairs
4. Zea mays, monocot stem with scattered bundles, t.s.
5. Helianthus, sunflower, dicot herbaceous stem t.s.
6. Zea mays, corn, monocot gramineous leaf t.s.
7. Syringa, lilac, t.s. of a typical mesophytic dicot leaf
8. Tulipa, tulip, leaf epidermis w.m., stomata and guard cells
9. Lilium, lily, t.s. of flower bud showing floral diagram
10. Lilium, anther t.s. showing pollen chambers and pollen grains
11. Lilium, ovary t.s., showing arrangement of ovules
12. Triticum, wheat, seed t.s. embryo and endosperm

[Cat #: JL-46MP](#)

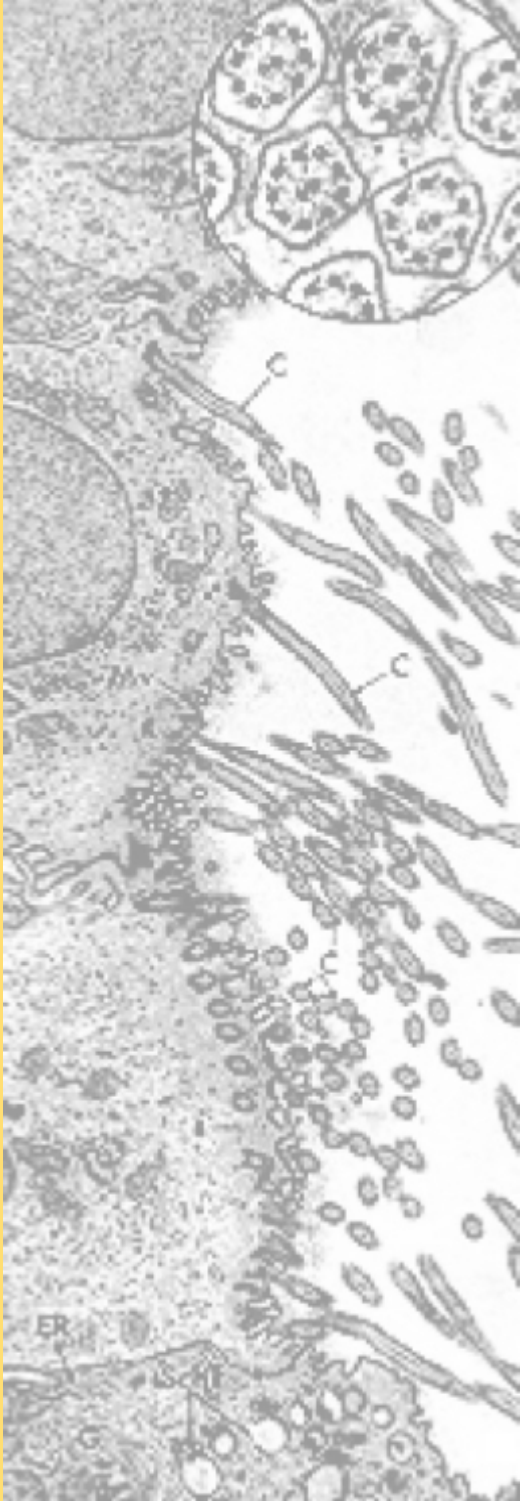
### Anatomy of Phanerogams, Supplementary Media Pack



12 Microscope Slides in Plastic Box, 6 OHP Colour Transparencies, 12 Sketch and Worksheets, Brochure with explanatory text - **30 Media Items**

1. Herbaceous and woody roots, two t.s. on one slide
2. Lupinus, root nodules with nitrogen fixing bacteria t.s.
3. Fagus, beech, root with ectotrophic mycorrhiza, t.s.
4. Aristolochia, older stem t.s.
5. Cucurbita, pumpkin, l.s. of stem with sieve tubes and vascular bundles
6. Solanum tuberosum, potato, t.s. of tuber with starch grains
7. Nerium, oleander, leaf with sunken stomata t.s. xerophytic leaf
8. Pinus, leaves (needles), t.s.
9. Lycopersicum, tomato, t.s. of flower bud shows floral diagram

10. Mixed pollen types, many different species
11. Pinus, ovule l.s. showing archegonia
12. Pinus, male cone with pollen l.s.



P.O Box 136,

MT DRUITT N.S.W 2770

Australia

Tele: (02) 9675 7750

Fax: (02) 9675 7702

<http://www.msmedia.com.au>