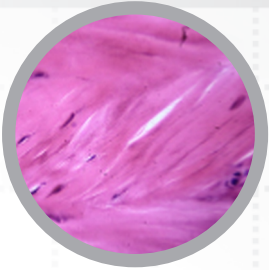


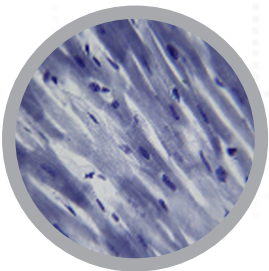
# HUMAN HISTOLOGY SLIDE SETS

## Cat #: CH-HIST1 - EPITHELIAL & CONNECTIVE SLIDE SET - 11 slides



- 1 - Simple columnar epithelium of human sec.
- 2 - Simple cuboidal epithelium of human sec.
- 3 - Pseudostratified ciliated columnar epithelium of human sec.
- 4 - Simple columnar ciliated epithelium of human sec.
- 5 - Stratified squamous epithelium of human sec.
- 6 - Epithelium cells of cavitas oris of human w.s.
- 7 - Loose connective tissue of human sec.
- 8 - Adipose tissue of human sec.
- 9 - Hyaline cartilage of human sec.
- 10 - Fibrous cartilage of human sec.
- 11 - Elastic cartilage of human sec.

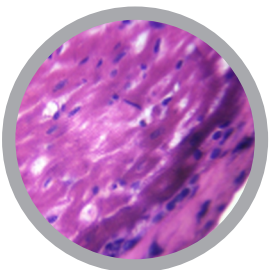
## Cat #: CH-HIST2 - MUSCULAR AND SKELETAL SYSTEM SLIDE SET - 9 slides



- 1 - Smooth muscle isolated of human sec.
- 2 - Skeletal muscle of human t.s. and l.s. (H&E)
- 3 - Skeletal muscle of human l.s. (hematoxylin staining)
- 4 - Skeletal muscle isolated of human w.s.
- 5 - Cardiac muscle of human sec. (H&E)
- 6 - Human bone grinding w.s.
- 7 - Hard bone of human t.s. (thionin-picric acid staining)
- 8 - Hard bone of human l.s. (thionin-picric acid staining)
- 9 - Human toe bone l.s.

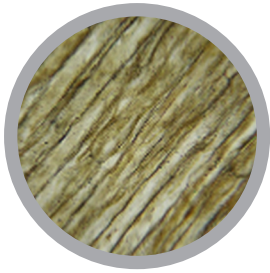
For slide set prices see [page 31](#). If you are interested in purchasing individual slides [CLICK HERE](#)

## Cat #: CH-HIST4 - CARDIOVASCULAR AND RESPIRATORY SYSTEM SLIDE SET - 13 slides



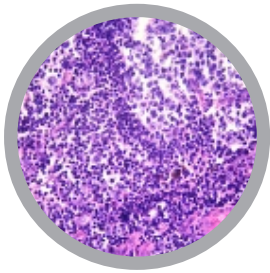
- 1 - Cardiac muscle of human sec.
- 2 - Cardiac valve of human sec.
- 3 - Human medium-sized artery and vein sec.
- 4 - Large artery of human sec.
- 5 - Large vein of human sec.
- 6 - Human Heart sec. (showing Purkinje cell)
- 7 - Blood (TYPE A.B.O) of human smear
- 8 - Blood of human smear (H&E)
- 9 - Blood of human smear (stained with Giemsa)
- 10 - Trachea of human t.s.
- 11 - Trachea of human l.s.
- 12 - Human Lung sec.
- 13 - Epiglottic cartilage of human sagittal section

Cat #: CH-HIST3 - NEUROLOGICAL SYSTEM SLIDE SET - 9 slides



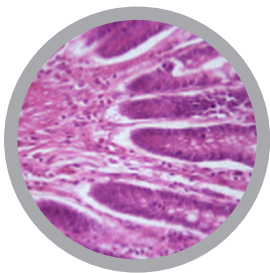
- 1 - Spinal cord of human t.s.
- 2 - Myelinated nerve fiber of human t.s.and l.s. (H&E)
- 3 - Myelinated nerve fiber of human t.s.and l.s. (silver staining)
- 4 - Tactile corpuscle of human sec.
- 5 - Lamellar corpuscle of human sec.
- 6 - Cerebrum of human sec. (silver staining)
- 7 - Cerebrum of human sec. (H&E)
- 8 - Cerebellum of human sec. (H&E)
- 9 - Cerebellum of human sec. (silver staining)

Cat #: CH-HIST5 - IMMUNE SYSTEM SLIDE SET - 10 slides



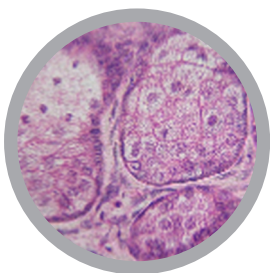
- 1 - Lymphoid node of human sec.
- 2 - Spleen of human sec.
- 3 - Thymus of human sec.
- 4 - Palatine tonsil of human sec.
- 5 - Red bone marrow of human t.s.
- 6 - Vermiform appendix of human sec.
- 7 - T-lymphocyte (E rosette assay)
- 8 - Microphage w.m. (phagocytosis)
- 9 - Macrophage w.m. (phagocytosis)
- 10 - Lymphocyte transformation w.m.

Cat #: CH-HIST6 - DIGESTIVE SYSTEM SLIDE SET - 19 slides



- 1 - Tooth sec.
- 2 - Liver of human sec. (show bile canaliculus of liver)
- 3 - Tongue of human l.s. (show intertal structure)
- 4 - Oesophagus of human t.s.
- 5 - Stomach of human t.s.
- 6 - Gastric section of stomach of human sec.
- 7 - Small intestine of human t.s.
- 8 - Small intestine of human l.s.
- 9 - Jejunum of human sec.
- 10 - Duodenum of human sec.
- 11 - Ileum of human sec.
- 12 - Vermiform appendix of human sec.
- 13 - Large intestine of human l.s.
- 14 - Large intestine of human t.s.
- 15 - Rectum sec.
- 16 - Parotid gland of human sec.
- 17 - Submandibular gland of human sec.
- 18 - Sublingual gland of human sec.
- 19 - Gall bladder of human sec.

Cat #: CH-HIST8 - INTEGUMENTARY SYSTEM SLIDE SET - 8 slides



- 1 - Lip sec.
- 2 - Human eyelid sec.
- 3 - Skin of human (show sweat gland) sec.
- 4 - Skin of human (show hair follicle) sec.
- 5 - Skin of human (show hair follicle) t.s.
- 6 - Skin of human back sec.
- 7 - Abdominal skin of human sec.
- 8 - Skin of human (show stratum corneum) sec.
- 9 - Hair of human w.s.

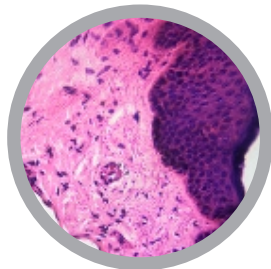
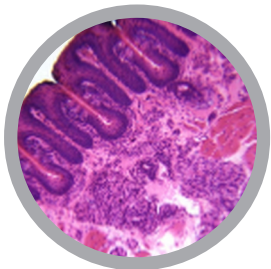
Cat #: CH-HIST7 - URINARY AND REPRODUCTIVE SYSTEM SLIDE SET - 21 slides



- 1 - Urinary bladder of human
- 2 - Kidney of human sec.
- 3 - Ureter of human t.s.
- 4 - Kidney of human through renal cortex t.s.
- 5 - Testis of human sec.
- 6 - Spermatozoon of human smear
- 7 - Epididymis of human sec.
- 8 - Prostate of human sec.
- 9 - Ductus deferens of human t.s.
- 10 - Glandula vesiculosa of human sec.
- 11 - Penis of human sec. (infant)
- 12 - Human uterus (proliferative phase) sec.
- 13 - Human uterus (secretory phase) sec.
- 14 - Uterine cervix of human sec.
- 15 - Oviduct of human t.s.
- 16 - Ampulla of uterine tube of human t.s.
- 17 - Vagina of human sec.
- 18 - Human mammary gland (active phase) sec.
- 19 - Placenta of human sec.
- 20 - Ovary of human sec.
- 21 - Human corpus luteum sec.

For slide set prices see [page 31](#). If you are interested in purchasing individual slides [CLICK HERE](#)

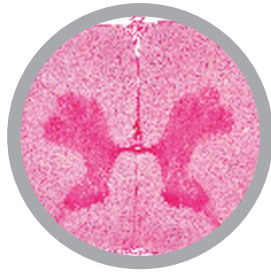
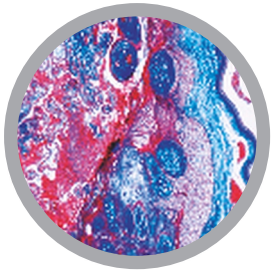
Cat #: CH-HIST9 - ORAL HISTOLOGY SLIDE SET - 39 slides



- 1 - Tooth sec.
- 2 - Tooth abrasive disc
- 3 - Periodontal tissue sec.
- 4 - Gum sec.
- 5 - Alveolar bone slides
- 6 - Soft palate slides
- 7 - Hard palate slides
- 8 - Lip slide
- 9 - Buccal mucosa slides
- 10 - Papillae filiformes sec.
- 11 - Circumvallate papillae
- 12 - Foliate papillae
- 13 - Parotid gland sec.
- 14 - Glandula submandibularis sec.
- 15 - Sublingual gland sec.
- 16 - Enamel - Transverse ground section t.s.
- 17 - Enamel - Longitudinal ground section l.s.
- 18 - Enamel - Transverse ground section in human tooth t.s.
- 19 - Dentin - Transverse ground section t.s.
- 20 - Dentin - Longitudinal ground section l.s.

- 21 - Dentin - Decalcified section in a tooth t.s.
- 22 - Dentin - Decalcified section in a tooth l.s.
- 23 - Cementum - Transverse ground section t.s.
- 24 - Cementum - Longitudinal ground section l.s.
- 25 - Cementum - Decalcified section in a tooth t.s.
- 26 - Cementum - Decalcified section in a tooth l.s.
- 27 - Pulp - Decalcified section in human tooth l.s.
- 28 - Pulp - Decalcified section in human tooth t.s.
- 29 - Periodontal ligament - Decalcified section , tooth in-situe (mesio-distal section)
- 30 - Periodontal ligament - Decalcified section of jaw & teeth in-side (buccolingual section)
- 31 - Bone - Longitudinal ground section in long bone l.s.
- 32 - Bone - Transverse ground section in long bone t.s.
- 33 - Bone - Decalcified section in cancellous bone
- 34 - Mucous Membrane - Coronal section in the tongue t.s.
- 35 - Mucous Membrane - Sagital section in the tongue l.s.
- 36 - Mucous Membrane - Filiform papilla
- 37 - Mucous Membrane - Fungiformer papilla
- 38 - Taste Buds
- 39 - Attached epithelium - dentogingival junction

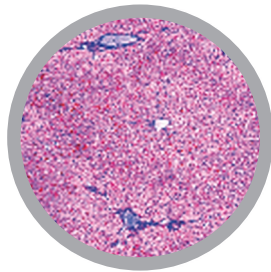
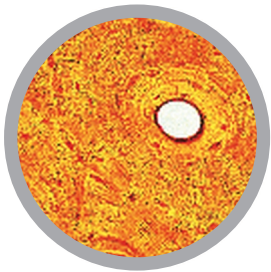
Cat #: JL-1HPM - NORMAL HUMAN HISTOLOGY SLIDE SET - 40 slides



- 1 - Squamous epithelium, human, isolated cells
- 2 - Areolar connective tissue, human w.m.
- 3 - Hyaline cartilage, human t.s.
- 4 - Compact bone, human t.s.
- 5 - Striated muscle, human l.s.
- 6 - Heart muscle, human l.s. and t.s.
- 7 - Artery, human t.s.
- 8 - Vein, human t.s.
- 9 - Lung, human t.s.
- 10 - Blood smear, human
- 11 - Spleen, human t.s.
- 12 - Thyroid gland, human t.s.
- 13 - Thymus gland from human child t.s.
- 14 - Tongue, human t.s.
- 15 - Tooth, human l.s.
- 16 - Parotid, human gland t.s.

- 17 - Oesophagus, human t.s.
- 18 - Stomach, human, fundic region t.s.
- 19 - Duodenum, human t.s. (small intestine)
- 20 - Colon, human t.s. (large intestine)
- 21 - Pancreas, human t.s.
- 22 - Liver, human t.s.
- 23 - Vermiform appendix, human t.s.
- 24 - Kidney, human t.s.
- 25 - Adrenal (suprarenal) gland, human t.s.
- 26 - Ovary, human t.s.
- 27 - Uterus, human t.s.
- 28 - Placenta, human t.s.
- 29 - Testis, human t.s.
- 30 - Epididymis, human t.s.
- 31 - Cerebrum, human t.s.
- 32 - Cerebellum, human t.s.
- 33 - Spinal cord, human t.s.
- 34 - Sympathetic ganglion, human t.s.
- 35 - Skin of palm, human t.s.
- 36 - Scalp, human, l.s. of hair follicles
- 37 - Scalp, human, t.s. of hair follicles
- 38 - Retina, human t.s.
- 39 - Finger tip from foetus with nail development l.s.
- 40 - Mammary gland, human t.s.

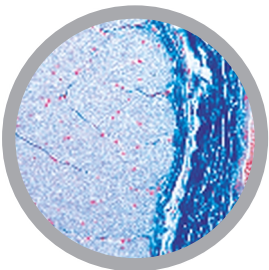
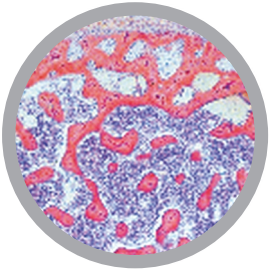
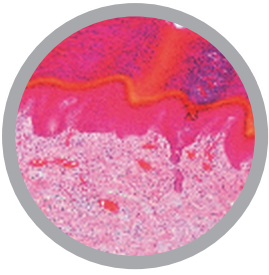
Cat #: JL-2HPM - HUMAN HISTOLOGY PART 1, SLIDE SET - 50 slides



- 1 - Isolated squamous epithelium, human
- 2 - Connective tissue, human, sec.
- 3 - Columnar epithelium, human gall bladder, t.s.
- 4 - Ciliated epithelium, human trachea, t.s.
- 5 - Smooth muscles, human, l.s. and t.s.
- 6 - Striated muscles, human, l.s.
- 7 - Heart muscles, human, l.s. and t.s.
- 8 - Hyaline cartilage, human, sec.
- 9 - Elastic cartilage of epiglottis, human, t.s.
- 10 - Bone, compact substance, human, t.s.
- 11 - White fibrous tissue (tendon), human, l.s.
- 12 - Red bone marrow, human, t.s.
- 13 - Scalp, human, l.s. of hair follicles
- 14 - Artery, human, t.s.
- 15 - Vein, human, t.s.
- 16 - Blood smear, human, Giemsa stain
- 17 - Lung, human, t.s.
- 18 - Larynx of human foetus, t.s.
- 19 - Lymph gland, human, t.s.
- 20 - Thyroid gland, human, t.s.
- 21 - Pituitary gland, human, t.s.

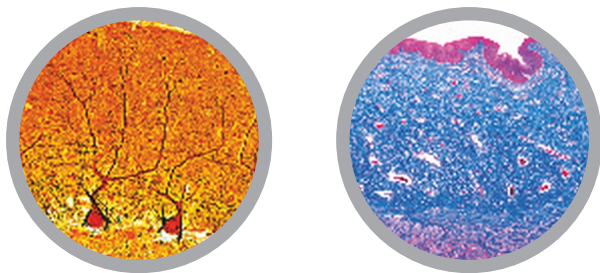
- 22 - Spleen, human, t.s.
- 23 - Tongue, human, t.s.
- 24 - Oesophagus, human, t.s.
- 25 - Sublingual gland, human, t.s.
- 26 - Stomach, pyloric region, human, t.s.
- 27 - Pancreas, human, t.s.
- 28 - Small intestine, human, t.s.
- 29 - Large intestine, human, t.s.
- 30 - Liver, human, t.s.
- 31 - Kidney, human, t.s.
- 32 - Adrenal gland, human, t.s.
- 33 - Ureter, human, t.s.
- 34 - Urinary bladder, human, t.s.
- 35 - Ovary, human, t.s.
- 36 - Uterus, human, t.s.
- 37 - Uterine tube, human, t.s.
- 38 - Placenta, human, t.s.
- 39 - Umbilical cord, human, t.s.
- 40 - Mammary gland, human, sec.
- 41 - Testis, human, t.s.
- 42 - Epididymis, human, t.s.
- 43 - Olfactory epithelium, human, t.s.
- 44 - Retina, human, t.s.
- 45 - Internal ear, human foetal, t.s.
- 46 - Touch corpuscles in human skin, t.s.
- 47 - Nerve, human, l.s.
- 48 - Spinal cord, human, t.s.
- 49 - Cerebellum, human, t.s.
- 50 - Cerebrum, cortex, human, t.s.





- 1 - Soft palate, human t.s.
- 2 - Adipose tissue, human, sec. stained for fat
- 3 - White fibrous cartilage, human intervertebral disc, sec.
- 4 - Striated (skeletal) muscle, human t.s.
- 5 - Spongy (cancellous) bone, human t.s.
- 6 - Bone development (intermembranous), vertical l.s. of foetal skull-cap (cranial bone)
- 7 - Bone development (intracartilaginous), l.s. of foetal finger
- 8 - Joint of human foetus, l.s.
- 9 - Tooth, human, t.s. of crown
- 10 - Tooth, human, complete l.s.
- 11 - Tooth development from human foetus, medium stage l.s.
- 12 - Aorta, human, t.s. routine stained
- 13 - Trachea from human foetus t.s.
- 14 - Thymus from human child, t.s.
- 15 - Parathyroid gland (Gl. parathyreoidea), human t.s.
- 16 - Tonsil (Tonsilla palatina), human t.s.
- 17 - Parotid gland (Gl. parotis), human t.s.
- 18 - Submaxillary gland (Gl. submandibularis), human t.s.
- 19 - Stomach, fundic region, human t.s.
- 20 - Stomach, cardiac region, human t.s.
- 21 - Jejunum, human t.s.
- 22 - Small intestine (Duodenum) t.s. colouring of goblet cells, PAS-HE
- 23 - Vermiform appendix, human t.s.
- 24 - Rectum, human t.s.
- 25 - Gall bladder, human t.s.
- 26 - Liver of human foetus sec., developing blood cells
- 27 - Urethra, human, t.s.
- 28 - Seminal vesicle (Gl. vesiculosa), human t.s.
- 29 - Spermatic cord (Ductus deferens), human t.s.
- 30 - Prostate, human, t.s.
- 31 - Sperm smear, human
- 32 - Corpus luteum in t.s. of human ovary
- 33 - Vagina, human t.s.
- 34 - Cerebral cortex, human, t.s. silvered (Golgi or Palmgren)
- 35 - Cerebral cortex, human, t.s. stained for neuroglial cells after Held
- 36 - Cerebellum, human, t.s. silvered (Golgi or Palmgren)
- 37 - Thalamus, human, stained after Klüver - Barrera
- 38 - Medulla oblongata, human, t.s. routine stained
- 39 - Spinal cord, human, t.s. silvered (Golgi or Palmgren)
- 40 - Sympathetic ganglion, human t.s. routine stained
- 41 - Peripheral nerve, human t.s.
- 42 - Optic nerve, human t.s.
- 43 - Cornea from eye, human t.s.
- 44 - Eyelid, human, t.s.
- 45 - Skin from finger tip, human, vertical l.s.
- 46 - Scalp, human, horizontal l.s. shows t.s. of hair follicles
- 47 - Nail development, sagittal l.s. finger tip of human foetus
- 48 - Human chromosomes in smear from culture of blood, male
- 49 - Human chromosomes in smear from culture of blood, female
- 50 - Barr bodies (human sex chromatin) in smear from female squamous epithelium \*

For slide set prices see [page 31](#). If you are interested in purchasing individual slides [CLICK HERE](#)



**Mostly stained in clear Hematoxyline - Eosine (HE)**

- 1 - Squamous epithelium, isolated cells from human mouth, smear
- 2 - Stratified, non-cornified squamous epithelium, section of oesophagus
- 3 - Simple columnar epithelium, in sec. of secreting tubules of human kidney
- 4 - Simple ciliated columnar epithelium, in t.s. of oviduct
- 5 - Simple cuboidal epithelium, in sec. of human thyroid gland
- 6 - Transitional epithelium, in sec. of human bladder
- 7 - Glandular epithelium, in sec. of human colon with unicellular mucous glands
- 8 - Areolar connective tissue, human w.m.
- 9 - Embryonic connective tissue from human foetus, sec.
- 10 - Adipose tissue, human, sec. fat removed to show the cells
- 11 - Hyaline cartilage, human t.s.
- 12 - Yellow elastic cartilage, human, sec. stained for elastic fibres
- 13 - White fibrous cartilage, human sec.
- 14 - Compact bone, human t.s.
- 15 - Compact bone, human l.s.
- 16 - Bone development (intracartilaginous), l.s. of foetal finger
- 17 - Bone development (intermembranous), vertical l.s. of foetal skull-cap (cranial bone)
- 18 - Striated (skeletal) muscle, human l.s.
- 19 - Striated (skeletal) muscle, human t.s.
- 20 - Smooth (involuntary) muscle, human l.s. and t.s.
- 21 - Heart (cardiac) muscle, human l.s. and t.s.
- 22 - Artery, human, t.s. stained for elastic fibres
- 23 - Vein, human, t.s. stained for elastic fibres
- 24 - Aorta, human, t.s. routine stained
- 25 - Blood smear, human, Wright's stain
- 26 - Trachea, human t.s.
- 27 - Trachea, human l.s.
- 28 - Trachea from human fetus t.s.
- 29 - Lung, human, sec. routine stained
- 30 - Lung from human foetus, sec.
- 31 - Lymphnode, human t.s.
- 32 - Tonsil (Tonsilla palatina), human t.s.
- 33 - Spleen, human t.s.
- 34 - Bone marrow, human t.s.
- 35 - Thymus from human child, t.s.
- 36 - Thyroid gland (Gl. thyroidea), human t.s.
- 37 - Adrenal gland (Gl. suprarenalis), human t.s.
- 38 - Pituitary gland (Hypophysis), human t.s.
- 39 - Pineal body (Epiphysis), human t.s.
- 40 - Lip, human vertical l.s.
- 41 - Tooth, human, t.s. of crown
- 42 - Tooth, human, l.s. of entire specimen
- 43 - Tooth development from human foetus, medium stage l.s.
- 44 - Tongue, human, sec. with filiform papillae
- 45 - Tongue, human, sec. with fungiform papillae
- 46 - Soft palate, human t.s.
- 47 - Oesophagus, human t.s.
- 48 - Stomach, fundic region, human t.s.
- 49 - Duodenum, human t.s.
- 50 - Jejunum, human t.s.
- 51 - Ileum, human t.s.
- 52 - Vermiform appendix, human t.s.
- 53 - Colon, human t.s.
- 54 - Parotid gland (Gl. parotis), human t.s.
- 55 - Submaxillary gland (Gl. submandibularis), human t.s.
- 56 - Pancreas, human t.s.
- 57 - Liver, human t.s.
- 58 - Gall bladder, human t.s.
- 59 - Kidney, human t.s.
- 60 - Renal papilla, human t.s.
- 61 - Kidney from human foetus, t.s.
- 62 - Ureter, human t.s.
- 63 - Urinary bladder, human t.s.
- 64 - Urethra, prostatic part, human t.s.
- 65 - Ovary, mature, human t.s.
- 66 - Ovary with Corpus luteum, human t.s.
- 67 - Oviduct (fallopian tube), t.s. in region of ampulla
- 68 - Uterus, human, proliferative stage t.s.
- 69 - Uterus, human, pregnant (gravid), t.s.
- 70 - Placenta, human t.s.
- 71 - Umbilical cord (navel string), human t.s.
- 72 - Vagina, human t.s.
- 73 - Testis from human child, t.s.
- 74 - Testis from human adult, mature stage t.s.
- 75 - Epididymis, human t.s.
- 76 - Sperm smear, human
- 77 - Spermatic cord (Ductus deferens), human t.s.
- 78 - Seminal vesicle (Gl. vesiculosa), human t.s.
- 79 - Prostata of young man, t.s.
- 80 - Penis from human foetus, t.s.
- 81 - Cerebral cortex, human, t.s. routine stained
- 82 - Cerebellum, human, t.s. routine stained
- 83 - Cerebellum from human foetus, t.s. routine stained
- 84 - Cerebrum and cerebellum composite slide, human, t.s. routine stained
- 85 - Medulla oblongata, human, t.s. routine stained
- 86 - Medulla oblongata from human foetus, t.s.
- 87 - Spinal cord, human t.s. of cervical region
- 88 - Spinal cord, human t.s. of thoracic region
- 89 - Spinal cord, human t.s. of lumbar region
- 90 - Spinal cord, human l.s. routine stained
- 91 - Spinal ganglion, human t.s.
- 92 - Peripheral nerve, human t.s.
- 93 - Peripheral nerve, human l.s.
- 94 - Optic nerve, human t.s.
- 95 - Retina from eye, t.s.
- 96 - Olfactory epithelium, human t.s.
- 97 - Skin from palm, human, vertical l.s.
- 98 - Body skin, white, vertical l.s.
- 99 - Scalp, vertical l.s. shows l.s. of hair follicles, human
- 100 - Scalp, horizontal l.s. shows t.s. of hair follicles, human
- 101 - Scalp of human foetus, vertical l.s. shows l.s. of hairs
- 102 - Finger tip of human foetus, sagittal l.s. showing nail development
- 103 - Mammary gland, active, human t.s.

\*\* Depending on availability this set can occasionally consist of 100 slides only. It is also possible that some of the slides may be different to the ones advertised. If this occurs suitable replacements are offered. If this is an issue please check with us before ordering.