

# EMBRYOLOGY SLIDE SETS

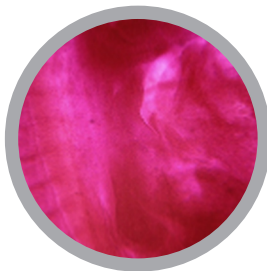
Cat #: CH-EMB1 - FROG EMBRYOLOGY SLIDE SET - 28 slides



- 1 - Simple-cell of egg of frog sec.
- 2 - 2-cell of egg of frog sec.
- 3 - Early cleavage stage of egg of frog sec.
- 4 - Late cleavage stage of egg of frog sec.
- 5 - Early blastula stage of egg of frog sec.
- 6 - Late blastula stage of egg of frog sec.
- 7 - Early gastrula stage of egg of frog sec.
- 8 - Late gastrula stage of egg of frog sec.
- 9 - Neural plate stage of egg of frog sec.
- 10 - Neural fold stage of egg of frog sec.
- 11 - Neural tube stage of egg of frog sec.
- 12 - 3mm embryo of frog w.m.
- 13 - 3mm embryo of frog serial transverse sections (set)
- 14 - 3mm embryo of frog serial sagittal sections t.s. (set)
- 15 - 5mm embryo of frog w.m.
- 16 - 5mm embryo of frog serial transverse sections (2pcs/set)
- 17 - 5mm embryo of frog serial sagittal sections (set)
- 18 - 7-9mm embryo of frog serial longitudinal sections (set)
- 19 - 7-9mm embryo of frog serial transverse sections ( 2pcs/set)
- 20 - 7-9mm embryo of frog serial frontal sections ( 2pcs/set)
- 21 - 10-11mm embryo of frog serial longitudinal sections (2pcs/set)
- 22 - 10-11mm embryo of frog serial transverse sections (4pcs/set)
- 23 - 10-11mm embryo of frog serial frontal sections (2pcs/set)
- 24 - Anterior part of 10mm embryo of frog l.s.
- 25 - 11mm embryo of frog l.s.
- 26 - Head of tadpole t.s.
- 27 - Thorax of tadpole t.s.
- 28 - Abdomen of tadpole t.s.

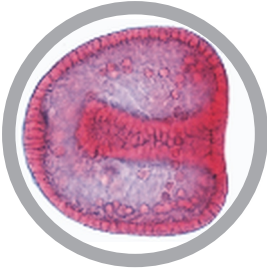
For slide set prices see [page 40](#). If you are interested in purchasing individual slides [CLICK HERE](#)

Cat #: CH-EMB2 - CHICKEN EMBRYOLOGY SLIDE SET - 15 slides



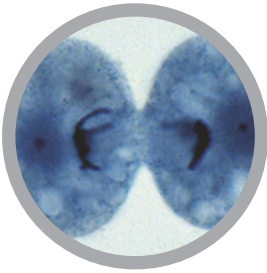
- 1 - Fertilized eggs of *Penaeus orientalis* w.m.
- 2 - Early stage of cleavage of *Penaeus orientalis* (2 cells) w.m.
- 3 - Early stage of cleavage of *Penaeus orientalis* (4 cells) w.m.
- 4 - Early stage of cleavage of *Penaeus orientalis* (8 cells) w.m.
- 5 - Blastula stage of *Penaeus orientalis* w.m.
- 6 - Gastrula stage of *Penaeus orientalis* w.m.
- 7 - Nauplius in membrane w.m.
- 8 - Embryo of chicken (24 hour) w.m.
- 9 - Embryo of chicken (24 hour) serial transverse sections.
- 10 - Embryo of chicken (48 hour) w.m.
- 11 - Embryo of chicken (48 hour) serial transverse sections.
- 12 - Embryo of chicken (72 hour) w.m.
- 13 - Embryo of chicken (72 hour) serial transverse sections.
- 14 - Embryo of chicken (96 hour) w.m.
- 15 - Embryo of chicken (96 hour) serial transverse sections.

Cat #: JL-4CEG - SEA URCHIN EMBRYOLOGY SLIDE SET - 12 slides



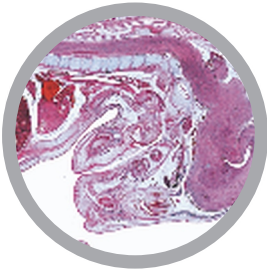
- 1 - Sea urchin, unfertilized eggs
- 2 - Sea urchin, fertilized eggs
- 3 - Sea urchin, two cells
- 4 - Sea urchin, four cells
- 5 - Sea urchin, eight cells
- 6 - Sea urchin, sixteen cells
- 7 - Sea urchin, thirty-two cells
- 8 - Sea urchin, morula
- 9 - Sea urchin, blastula
- 10 - Sea urchin, blastula, beginning gastrulation
- 11 - Sea urchin, blastula, progressive gastrulation
- 12 - Sea urchin, pluteus larva

Cat #: JL-5CEG - ASCARIS MEGALOCYPHALA EMBRYOLOGY SLIDE SET - 10 slides



- 1 - Cell division in l.s. of Allium root tips, each slide showing all mitotic stages, carefully stained. For general study of mitosis
- 2 - Ascaris, primary germ cells in the growing zone of oviduct
- 3 - Ascaris, entrance of sperm in the oocytes
- 4 - Ascaris, first and second maturation divisions in oocytes I
- 5 - Ascaris, first and second maturation divisions in oocytes II
- 6 - Ascaris, mature oocytes with male and female pronuclei
- 7 - Ascaris, early cleavage stages
- 8 - Ascaris, later cleavage stages
- 9 - Ascaris, adult female roundworm, t.s. in region of gonads
- 10 - Ascaris, adult male roundworm, t.s. in region of gonads

Cat #: JL-8CEG - PIG EMBRYOLOGY SLIDE SET - 10 slides



- 1 - Pig embryo, 4-6 mm, typical t.s.
- 2 - Pig embryo, 7-9 mm, sagittal l.s.
- 3 - Pig embryo, 11-12 mm, typical t.s. through region of head
- 4 - Pig embryo, 11-12 mm, typical t.s. region of abdomen
- 5 - Pig embryo, 15 mm, typical t.s. through region of head
- 6 - Pig embryo, 15 mm, typical t.s. through region of thorax
- 7 - Pig embryo, 15 mm, typical t.s. through region of abdomen
- 8 - Pig embryo, 15 mm, sagittal l.s.
- 9 - Pig embryo, 20-25 mm, sagittal l.s.
- 10 - Pig embryo, 20-25 mm, frontal l.s.

For slide set prices see [page 40](#). If you are interested in purchasing individual slides [CLICK HERE](#)