

2011/12



MEDICAL & SCIENCE MEDIA

**Embryology
MICROSCOPE SLIDES**

P.O Box 136,
MT DRUITT N.S.W 2770 Australia

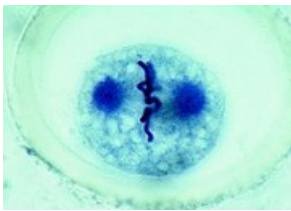
Tele: (02) 9675 7750

Fax: (02) 9675 7702

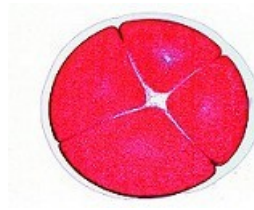
<http://www.msmedia.com.au/embryology.php>

[Cat #: JL-4CEG](#)**Sea Urchin Embryology Slide Set****12 slides**

- 1 - Sea urchin, unfertilized eggs
- 2 - Sea urchin, fertilized eggs
- 3 - Sea urchin, two cells
- 4 - Sea urchin, four cells
- 5 - Sea urchin, eight cells
- 6 - Sea urchin, sixteen cells
- 7 - Sea urchin, thirty-two cells
- 8 - Sea urchin, morula
- 9 - Sea urchin, blastula
- 10 - Sea urchin, blastula, beginning gastrulation
- 11 - Sea urchin, blastula, progressive gastrulation
- 12 - Sea urchin, pluteus larva

[Cat #: JL-5CEG](#)**Ascaris Megalocephala Embryology Slide Set****10 slides**

- 1 - Cell division in l.s. of Allium root tips, each slide showing all mitotic stages, carefully stained. For general study of mitosis
- 2 - Ascaris, primary germ cells in the growing zone of oviduct
- 3 - Ascaris, entrance of sperm in the oocytes
- 4 - Ascaris, first and second maturation divisions in oocytes I
- 5 - Ascaris, first and second maturation divisions in oocytes II
- 6 - Ascaris, mature oocytes with male and female pronuclei
- 7 - Ascaris, early cleavage stages
- 8 - Ascaris, later cleavage stages
- 9 - Ascaris, adult female roundworm, t.s. in region of gonads
- 10 - Ascaris, adult male roundworm, t.s. in region of gonads

[Cat #: JL-6CEG](#)**Frog Embryology Slide Set****10 slides**

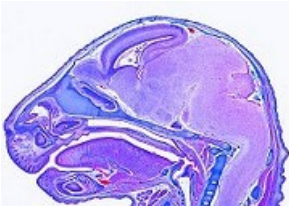
- 1 - Frog, morula, l.s. with macro- and micromeres
- 2 - Frog, blastula. l.s. shows blastocoel
- 3 - Frog, gastrula, sagittal l.s. shows germ layers, dorsal lip, yolk plug
- 4 - Frog, neurula, t.s. showing primordium of notochord, entoderm with primary intestinal cavity
- 5 - Frog, early tail bud stage, t.s. with neural tube, notochord
- 6 - Frog, early tail bud stage, sagittal l.s. with primordium of brain, intestine, segmentation of mesoderm
- 7 - Frog, hatching stage, t.s. through region of head or gills
- 8 - Frog, hatching stage, t.s. through region of midbody
- 9 - Frog, young tadpole, t.s. through head
- 10 - Frog, young tadpole, t.s. through thorax or abdomen

[Cat #: JL-7CEG](#)**Chicken Embryology Slide Set****10 slides**

- 1 - Chicken, 24 hour, t.s. with neural groove, notochord, germ layers
- 2 - Chicken, 36 hour, t.s. with neural tube, differentiation of mesoderm
- 3 - Chicken, 48 hour, l.s. with differentiation of mesoderm and ectoderm
- 4 - Chicken, 3 day, t.s. through body showing amnion and serosa. myotom, primordium of kidney, aorta, extraembryonic vessels
- 5 - Chicken, 3 day, t.s. of head with primordium of brain, eyes and heart
- 6 - Chicken, 3-4 day, horizontal section of entire specimen shows primordia of various organs, gill slits
- 7 - Chicken, 4-5 day, t.s. through region of head with brain, gill arches
- 8 - Chicken, 4-5 day, t.s. through region of heart shows heart, lungs, vertebrae, spinal cord
- 9 - Chicken, 8 day, sagittal l.s. through entire specimen showing various embryonic organs
- 10 - Chicken, feather development, sec. through wings in different stages of the development

[Cat #: JL-8CEG](#)

Pig Embryology Slide Set



10 slides

- 1 - Pig embryo, 4-6 mm, typical t.s.
- 2 - Pig embryo, 7-9 mm, sagittal l.s.
- 3 - Pig embryo, 11-12 mm, typical t.s. through region of head
- 4 - Pig embryo, 11-12 mm, typical t.s. region of abdomen
- 5 - Pig embryo, 15 mm, typical t.s. through region of head
- 6 - Pig embryo, 15 mm, typical t.s. through region of thorax
- 7 - Pig embryo, 15 mm, typical t.s. through region of abdomen
- 8 - Pig embryo, 15 mm, sagittal l.s.
- 9 - Pig embryo, 20-25 mm, sagittal l.s.
- 10 - Pig embryo, 20-25 mm, frontal l.s.



P.O Box 136,

MT DRUITT N.S.W 2770

Australia

Tele: (02) 9675 7750

Fax: (02) 9675 7702

<http://www.msmedia.com.au>