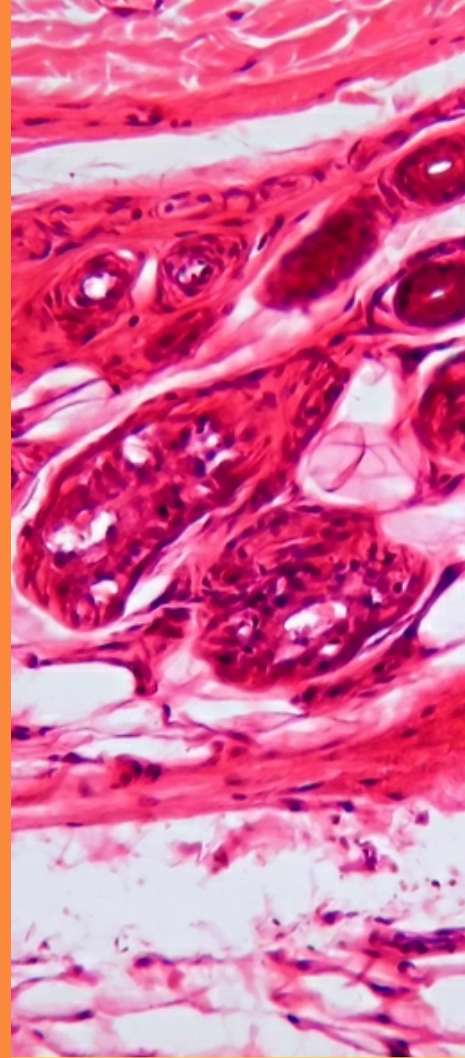


2011/12



MEDICAL & SCIENCE MEDIA

**Comparative Histology
MICROSCOPE SLIDES**

P.O Box 136,
MT DRUITT N.S.W 2770 Australia

Tele: (02) 9675 7750

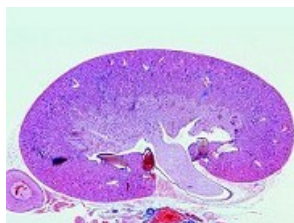
Fax: (02) 9675 7702

<http://www.msmedia.com.au/histology.php>



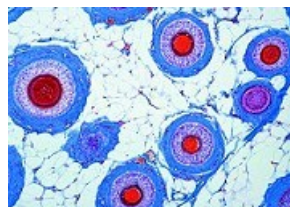
Cat #: JL-1CHM**Histology of Vertebrata
excluding Mammalia Slide Set****25 slides**

- 1 - Cyprinus, carp, liver t.s.
- 2 - Cyprinus, carp, testis t.s. showing spermatozoa
- 3 - Cyprinus, carp, small intestine t.s.
- 4 - Cyprinus, carp, kidney t.s.
- 5 - Cyprinus, carp, gills t.s.
- 6 - Cyprinus, carp, skin t.s.
- 7 - Fish scales, cycloid, ctenoid, and placoid scales w.m.
- 8 - Salamandra, skin with poison glands t.s.
- 9 - Salamandra, t.s. through thorax and forelegs of larva
- 10 - Rana, frog, lung t.s., a simple bag-like lung
- 11 - Rana, frog, blood smear, with nucleated corpuscles
- 12 - Rana, frog, stomach t.s.
- 13 - Rana, frog, large intestine t.s., with goblet cells
- 14 - Rana, frog, liver t.s. showing bile ducts
- 15 - Rana, frog, kidney t.s.
- 16 - Rana, frog, testis t.s. to show spermatogenesis
- 17 - Rana, frog, skin t.s. showing glands
- 18 - Lacerta, lizard, skin with scales, sagittal l.s.
- 19 - Gallus, chicken, blood smear, with nucleate red corpuscles
- 20 - Gallus, chicken, lung t.s.
- 21 - Gallus, chicken, glandular stomach t.s.
- 22 - Gallus, chicken, ovary with developing eggs t.s.
- 23 - Gallus, chicken, skin with developing feathers t.s. or l.s.
- 24 - Gallus, chicken, unfeathered skin of foot t.s.
- 25 - Gallus, chicken, wing and down feathers w.m.

Cat #: JL-2CHM**Histology of Mammalia, Elementary Slide Set****25 slides**

- 1 - Squamous epithelium, isolated cells
- 2 - Fibrous connective tissue, w.m. from pig mesentery
- 3 - Adipose tissue of mammal, fat stained
- 4 - Hyaline cartilage of calf, t.s.
- 5 - Compact bone of cow, t.s.
- 6 - Striated muscles of cat, l.s.
- 7 - Smooth muscles of cat, t.s. and l.s.

- 8 - Blood smear, human
- 9 - Artery of cat or rabbit, t.s.
- 10 - Vein of cat or rabbit, t.s.
- 11 - Lung of cat, t.s.
- 12 - Pancreas of pig with islets of Langerhans t.s.
- 13 - Tongue of cat, t.s. with cornified papillae
- 14 - Stomach of cat, fundic region t.s.
- 15 - Small intestine of cat or rabbit, t.s.
- 16 - Liver of pig, t.s.
- 17 - Kidney of cat, t.s.
- 18 - Ovary of rabbit, t.s., developing follicles
- 19 - Testis of mouse, t.s., spermatogenesis
- 20 - Cerebrum of cat, t.s.
- 21 - Cerebellum of cat, t.s.
- 22 - Spinal cord of cat, t.s.
- 23 - Nerve fibres isolated, Ranvier's nodes
- 24 - Motor nerve cells, smear from spinal cord
- 25 - Scalp, human, l.s. of hair follicles

Cat #: JL-3CHM**Histology of Mammalia, Supplementary Slide Set****50 slides**

- 1 - Columnar epithelium of mammal
- 2 - Ciliated epithelium of mammal
- 3 - White fibrous tissue, l.s. of tendon of cow
- 4 - Mucous tissue, t.s. of navel string
- 5 - Elastic cartilage, sec. stained for elastic fibres
- 6 - Bone development, l.s. of foetal finger
- 7 - Striated muscle of cat, t.s.
- 8 - Heart muscle of cat, l.s. and t.s.
- 9 - Red bone marrow of cow, sec. or smear
- 10 - Heart of mouse, sagittal l.s.
- 11 - Trachea of rabbit, t.s.
- 12 - Spleen of cat, t.s.
- 13 - Lymph gland of cat or rabbit, t.s.
- 14 - Adrenal (suprarenal) gland of rabbit, t.s.
- 15 - Epiphysis (pineal body) of cow or pig, t.s.
- 16 - Hypophysis (pituitary body) of cow or pig, l.s.
- 17 - Thyroid gland of cow, t.s.
- 18 - Thymus gland of cow, t.s. with Hassall bodies
- 19 - Parotid gland of cat, t.s.
- 20 - Tooth, t.s. through root or crown
- 21 - Oesophagus of rabbit, t.s.
- 22 - Vermiform appendix of rabbit, t.s.
- 23 - Large intestine (colon) of rabbit, t.s.
- 24 - Gall bladder of rabbit, t.s.
- 25 - Kidney t.s., vital stained with trypan blue showing storage
- 26 - Ureter of rabbit, t.s.
- 27 - Urinary bladder of rabbit, t.s.
- 28 - Ovary with corpus luteum t.s.
- 29 - Fallopian tube of pig, t.s.
- 30 - Uterus of rabbit, t.s.
- 31 - Placenta of rabbit, t.s.
- 32 - Uterus of rat, containing embryo t.s.
- 33 - Vagina of rabbit, t.s.
- 34 - Epididymis of rabbit, t.s.
- 35 - Sperm smear of bull

- 36 - Penis of rabbit, t.s.
- 37 - Prostate gland of pig, t.s.
- 38 - Brain of mouse, entire organ l.s.
- 39 - Cerebellum, t.s. silver stained for Purkinje cells
- 40 - Sympathetic ganglion, t.s. multipolar nerve cells
- 41 - Peripheral nerve of cat or rabbit, l.s.
- 42 - Eye of cat, anterior part with cornea t.s.
- 43 - Eye of cat, posterior part with retina t.s.
- 44 - Cochlea (internal ear) of Guinea pig, l.s. shows organ of Corti
- 45 - Olfactory region of dog or rabbit, t.s.
- 46 - Taste buds in tongue of rabbit (Papilla foliata) t.s.
- 47 - Skin of human palm, t.s.
- 48 - Scalp, human, t.s. of hair follicles
- 49 - Nail development of embryo, sagittal l.s.
- 50 - Mammary gland of cow, t.s.

[Cat #: JL-4CHM](#)

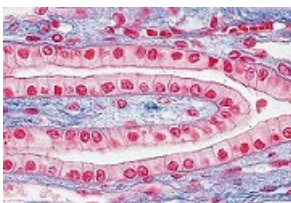
Cell Structure and It's Divisions Slide Set

10 slides

- 1 - Simple animal cells in sec. of salamander liver showing nuclei, cell membranes and cytoplasm. For general study of the animal cell
- 2 - Mitotic stages in sec. through red bone marrow of mammal
- 3 - Meiotic (maturation) stages in section through testis of salamander, selected material showing large structures *
- 4 - Human chromosomes in smear from culture of blood, male or female
- 5 - Mitochondria in thin sec. of kidney or liver, specially prepared and stained
- 6 - Pigment cells in skin
- 7 - Storage of glycogen in liver cells, sec. stained with carmine after Best or PAS reaction
- 8 - Mitotic stages in sec. of whitefish blastula showing spindles *
- 9 - Ascaris megalcephala embryology. Sec. of uteri showing maturation stages (meiosis). Polar bodies can be seen
- 10 - Ascaris megalcephala embryology. Sec. of uteri showing early cleavage stages (mitosis)

[Cat #: JL-5CHM](#)

Epithelial Tissue Slide Set



10 slides

- 1 - Squamous epithelium, isolated cells from human mouth, smear
- 2 - Stratified, non-cornified squamous epithelium, in section through buccal gum
- 3 - Simple columnar epithelium, in t.s. of small intestine
- 4 - Simple ciliated columnar epithelium, in t.s. of oviduct

- 5 - Pseudostratified ciliated columnar epithelium, in t.s. of trachea
- 6 - Cuboidal epithelium, in sec. of kidney papilla
- 7 - Cuboidal epithelium, in sec. of human thyroid gland
- 8 - Transitional epithelium, in sec. of urinary bladder of sheep
- 9 - Stratified, cornified squamous epithelium, in vertical l.s. of human body skin
- 10 - Goblet cells in sec. of colon, stained with mucicarmine

[Cat #: JL-6CHM](#)

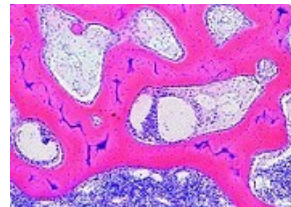
Connective Tissue Slide Set

10 slides

- 1 - Areolar connective tissue, w.m. and stained for fibres and cells
- 2 - White fibrous tissue, l.s. of tendon
- 3 - Yellow elastic fibrous tissue, l.s. of Ligamentum nuchae
- 4 - Elastic tissue, fibres teased and w.m.
- 5 - Reticular tissue t.s.
- 6 - Embryonic connective tissue t.s.
- 7 - Mucous tissue, t.s. of navel string (umbilical cord)
- 8 - Adipose tissue, section fat removed to show the cells
- 9 - Adipose tissue, section showing fat in situ stained by sudan
- 10 - Yellow elastic fibrous tissue, t.s. of Ligamentum nuchae

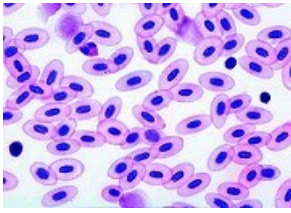
[Cat #: JL-7CHM](#)

Cartilage and Bones Slide Set



11 slides

- 1 - Hyaline cartilage of cat, t.s.
- 2 - Foetal hyaline cartilage, t.s.
- 3 - Yellow elastic cartilage, section specially stained for elastic fibres
- 4 - White fibrous cartilage, section
- 5 - Compact bone, t.s. specially prepared to show the cells and canaliculi
- 6 - Compact bone, l.s. specially prepared to show the cells and canaliculi
- 7 - Cancellous (spongy) bone, t.s.
- 8 - Bone development, intracartilaginous ossification in foetal finger or toe, l.s.
- 9 - Bone development, intermembranous ossification in foetal head (cranial bone), vertical l.s.
- 10 - Yellow bone marrow t.s.
- 11 - Joint of finger or toe, sagittal l.s.

[Cat #: JL-8CHM](#)**Blood Slide Set****10 slides**

- 1 - Human blood smear, Wright's stain
- 2 - Rabbit blood smear, Giemsa stain
- 3 - Cat blood smear, Giemsa stain
- 4 - Rat blood smear, Giemsa stain
- 5 - Rana, Frog, blood smear, nucleated erythrocytes
- 6 - Salamandra, blood smear
- 7 - Lacerta, lizard, blood smear
- 8 - Gallus domesticus, chicken, blood smear
- 9 - Cyprinus, carp, blood smear
- 10 - Red bone marrow of cow, thin sec.

[Cat #: JL-9CHM](#)**Muscle Tissue Slide Set****6 slides**

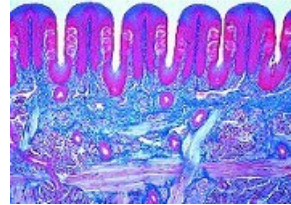
- 1 - Striated (skeletal) muscle l.s.
- 2 - Striated (skeletal) muscle t.s.
- 3 - Smooth (involuntary) muscle, l.s. and t.s.
- 4 - Heart muscle, l.s. and t.s.
- 5 - Striated (skeletal) muscle, thin l.s. specially stained to show details of the striations
- 6 - Heart muscle, l.s. and t.s. specially stained for intercalated discs

[Cat #: JL-10CHM](#)**Nerve Tissue Slide Set****15 slides**

- 1 - Cerebral cortex of cat or dog, t.s. routine stained
- 2 - Cerebral cortex, t.s. stained by Golgi's silver method to show the pyramid cells
- 3 - Cerebellum of cat or dog, t.s. routine stained
- 4 - Cerebellum, t.s. stained by Golgi's silver method to show the Purkinje cells
- 5 - Spinal cord of cat, t.s. routine stained
- 6 - Spinal cord of cat, t.s. stained for Nissl bodies
- 7 - Peripheral nerve of cow or pig, l.s. routine stained
- 8 - Peripheral nerve of cow or pig, t.s. routine stained
- 9 - Peripheral nerve, teased material of osmic acid fixed material showing Ranvier's nodes and medullary sheaths
- 10 - Motor nerve cells, smear preparation from spinal

cord of ox shows nerve cells and their appendages

- 11 - Spinal cord, cat, t.s., Klüver-Barrera stained
- 12 - Spinal cord, cow, t.s., Nissl stained
- 13 - Cerebrum, cat, t.s., Golgi stained
- 14 - Brain, rat, median l.s.
- 15 - Vertebra with spinal cord, rat, t.s.

[Cat #: JL-11CHM](#)**Sense Organs Slide Set****10 slides**

- 1 - Eye of cat, posterior part with retina, sagittal l.s.
- 2 - Eye of cat, anterior part with iris, ciliary body, cornea, sagittal l.s.
- 3 - Developing eyes in t.s. of head from guinea pig embryo
- 4 - Retina of cat, t.s. for general study
- 5 - Retina of pig, sec. with entrance of optic nerve
- 6 - Cornea of eye from pig, sagittal l.s.
- 7 - Cochlea (internal ear) from guinea pig, l.s. showing organ of Corti
- 8 - Olfactory region from nose of rabbit, t.s.
- 9 - Taste buds, t.s. of papilla foliata in tongue of rabbit shows abundant taste buds, carefully stained
- 10 - Tactile hairs with blood sinus, l.s. or t.s.

[Cat #: JL-12CHM](#)**Circulatory System Slide Set****8 slides**

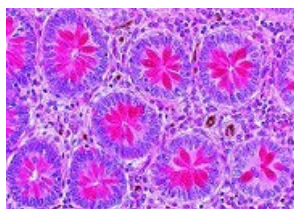
- 1 - Artery of rabbit, t.s. routine stained
- 2 - Artery of rabbit, t.s. stained for elastic fibres
- 3 - Vein of rabbit, t.s. routine stained
- 4 - Vein of rabbit, t.s. stained for elastic fibres
- 5 - Artery and vein of smaller size in one slide, guinea pig, t.s.
- 6 - Aorta of rabbit, t.s. stained for elastic fibres
- 7 - Heart of mouse, entire sagittal l.s.
- 8 - Heart of mouse, t.s.

[Cat #: JL-13CHM](#)**Lymphatic Tissue Slide Set****6 slides**

- 1 - Lymph node of cat, t.s. routine stained
- 2 - Lymph node of pig, t.s. routine stained
- 3 - Tonsil, human, t.s.
- 4 - Spleen of rabbit, t.s. showing capsula, pulp etc.
- 5 - Thymus of young cat, t.s. with Hassall bodies
- 6 - Red bone marrow of cow, smear specially stained

[Cat #: JL-14CHM](#)**Skin Slide Set****10 slides**

- 1 - Human skin from palm, vertical sec. showing cornified layers, sweat glands, etc.
- 2 - Human skin from palm, horizontal sec.
- 3 - Human scalp, sagittal l.s. sec. showing l.s. of hair follicles, sebaceous glands, etc.
- 4 - Human scalp, horizontal sec. shows t.s. of hair follicles
- 5 - Human skin from foetus, vertical sec. showing hair development
- 6 - Finger tip from human foetus, sagittal l.s. of nail development
- 7 - Skin with hairs, cat, vertical sec.
- 8 - Eyelid of cat, t.s. showing Meibomian gland
- 9 - Human hair, w.m.
- 10 - Mammary gland of cow, active t.s.

[Cat #: JL-15CHM](#)**Histology Digestive System Slide Set****15 slides**

- 1 - Tooth human, t.s. of root
- 2 - Tooth development, medium stage l.s.
- 3 - Tongue of cat, papilla with thick cornified layer, l.s.
- 4 - Oesophagus of cat or dog, t.s.
- 5 - Stomach of cat, fundic region t.s.
- 6 - Duodenum of cat or dog, t.s. showing Brunner's glands
- 7 - Jejunum of cat or dog, t.s.
- 8 - Small intestine of dog, injected to show the blood vessels and capillary network t.s.
- 9 - Vermiform appendix, human t.s.
- 10 - Colon, t.s. stained with mucicarmine, or PAS for demonstration of mucous cells
- 11 - Parotid gland of cat, t.s. of a pure serous gland
- 12 - Submaxillary gland of cat, t.s. of a mixed serous and mucous gland
- 13 - Pancreas of pig, t.s. showing islets of Langerhans
- 14 - Liver of pig, t.s. showing well developed connective tissue
- 15 - Gall bladder of sheep, t.s.

[Cat #: JL-16CHM](#)**Respiratory System Slide Set****6 slides**

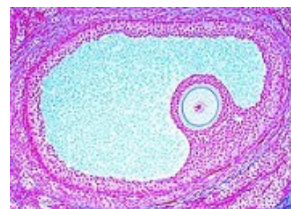
- 1 - Nasal region of small mammal (mouse or rat), t.s. showing respiratory and olfactory epithelium, bone etc.
- 2 - Trachea of cat or rabbit, l.s.
- 3 - Trachea of cat or rabbit, t.s. with ciliated

epithelium, cartilage etc.

- 4 - Lung of cat, t.s. routine stained for all details
- 5 - Lung of cat, t.s. stained for elastic fibres
- 6 - Miliary tuberculosis of lung

[Cat #: JL-17CHM](#)**Excretory System Slide Set****6 slides**

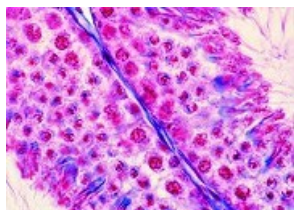
- 1 - Kidney of cat, t.s. showing cortex with Malpighian corpuscles and medulla with tubules, Mallory's stain
- 2 - Kidney of mouse, sagittal l.s. through complete organ with cortex, medulla and pelvis
- 3 - Kidney of mouse, t.s. vital stained with trypan-blue to demonstrate storage
- 4 - Ureter of pig, t.s.
- 5 - Urinary bladder of rabbit, t.s.
- 6 - Urethra of rabbit, t.s.

[Cat #: JL-18CHM](#)**Female Reproductive System Slide Set****10 slides**

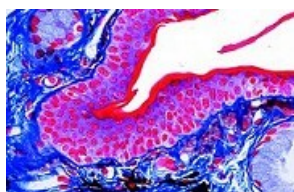
- 1 - Ovary of cat, t.s. for general study, shows primary, secondary and Graafian follicles
- 2 - Ovary, sec. selected to show Corpus luteum
- 3 - Fallopian tube of pig, t.s.
- 4 - Uterus of pig, resting stage, t.s.
- 5 - Uterus of pig, pregnant stage, t.s.
- 6 - Uterus of rat with embryo in situ, t.s.
- 7 - Placenta, human, t.s.
- 8 - Embryo of mouse, sagittal l.s. of entire specimen
- 9 - Vagina of pig, t.s.
- 10 - Umbilical cord of pig, t.s.

[Cat #: JL-19CHM](#)**Male Reproductive System Slide Set****7 slides**

- 1 - Testis of rat, t.s. showing spermatogenesis
- 2 - Epididymis of bull, t.s.
- 3 - Sperm smear of bull
- 4 - Spermatic cord (Ductus deferens) of pig or rabbit, t.s.
- 5 - Seminal vesicle (Gl. vesiculosa) of pig, t.s.
- 6 - Prostate gland of monkey, t.s.
- 7 - Penis of rabbit, t.s.

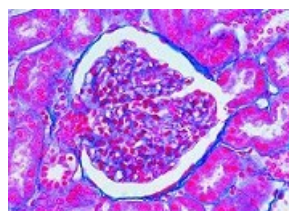
[Cat #: JL-20CHM](#)**Histology of the Rabbit Slide Set****25 slides**

- 1 - Rabbit, elastic cartilage from ear pinna, sec.
- 2 - Rabbit, striated muscle l.s.
- 3 - Rabbit, subcutaneous fat tissue, t.s.
- 4 - Rabbit, heart (cardiac) muscle l.s. and t.s.
- 5 - Rabbit, blood smear
- 6 - Rabbit, trachea t.s. with ciliated epithelium
- 7 - Rabbit, lung t.s.
- 8 - Rabbit, spleen t.s.
- 9 - Rabbit, thyroid gland t.s. with colloid
- 10 - Rabbit, tongue t.s., muscular layers
- 11 - Rabbit, stomach with digestive glands t.s.
- 12 - Rabbit, small intestine (duodenum) with villi, t.s.
- 13 - Rabbit, blind gut (caecum) t.s.
- 14 - Rabbit, symbiotic bacteria from the blind gut
- 15 - Rabbit, rectum with goblet cells, t.s.
- 16 - Rabbit, salivary gland t.s.
- 17 - Rabbit, liver t.s.
- 18 - Rabbit, kidney, sec. through cortex and medulla
- 19 - Rabbit, ovary t.s. showing follicles
- 20 - Rabbit, uterus t.s.
- 21 - Rabbit, testis t.s., showing spermatogenesis
- 22 - Rabbit, spermatozoa, smear
- 23 - Rabbit, olfactory region of nose, t.s.
- 24 - Rabbit, hair w.m.
- 25 - Rabbit, skin of body with hair follicles, l.s.

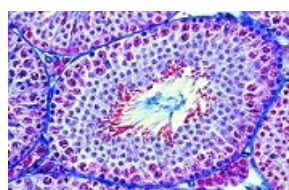
[Cat #: JL-21CHM](#)**Histology of the Frog Slide Set****20 slides**

- 1 - Frog, lung t.s., simple sac-like respiratory organ
- 2 - Frog, heart l.s. through the entire organ
- 3 - Frog, blood smear, shows nucleated red corpuscles
- 4 - Frog, spleen t.s., lymphatic tissue
- 5 - Frog, tongue t.s., papillae, glands, muscles
- 6 - Frog, oesophagus t.s., shows ciliated epithelium
- 7 - Frog, stomach t.s., glandular epithelium
- 8 - Frog, small intestine t.s., folds of intestinal membrane, chyle
- 9 - Frog, large intestine (colon) t.s., goblet cells
- 10 - Frog, pancreas t.s., showing islets of Langerhans
- 11 - Frog, liver t.s., showing liver parenchyma cells and bile ducts
- 12 - Frog, kidney t.s., Malpighian corpuscles, renal vessels

- 13 - Frog, urinary bladder t.s., smooth muscles, transitional epithelium
- 14 - Frog, ovary t.s. shows follicle development, formation of yolk
- 15 - Frog, testis t.s. showing spermatogenesis and mature spermatozoa
- 16 - Frog, fallopian tube (Müllerian duct) t.s., glandular cells
- 17 - Frog, interior brain t.s. showing nerve cells
- 18 - Frog, spinal cord t.s., showing motor nerve cells
- 19 - Frog, retina t.s., with rods and cones
- 20 - Frog, skin t.s., skin glands, epidermis, pigment cells

[Cat #: JL-22CHM](#)**Urinary System Slide Set****10 slides**

- 1 - Kidney, cat, t.s. showing cortex and medulla with glomeruli
- 2 - Kidney, pig, t.s. showing injected vessels
- 3 - Kidney, human, t.s. showing cortex and medulla with glomeruli
- 4 - Kidney, rat, t.s. of the whole organ
- 5 - Kidney, rat, l.s. of the whole organ
- 6 - Kidney of mouse, t.s. vital stained with trypan blue to demonstrate storage
- 7 - Ureter, human, t.s.
- 8 - Urinary bladder, cat, t.s.
- 9 - Urethra, human, t.s.
- 10 - Penis, rabbit, t.s.

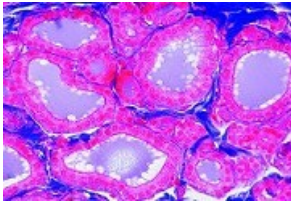
[Cat #: JL-23CHM](#)**Genital System Slide Set****14 slides**

- 1 - Testis, rabbit, t.s.
- 2 - Epididymis, rat, t.s.
- 3 - Spermatozoa, human, smear
- 4 - Vas deferens, human, t.s.
- 5 - Prostate, rat, t.s.
- 6 - Ovary, rabbit, t.s.
- 7 - Uterine tube, rabbit, t.s.
- 8 - Uterus, rabbit, t.s.
- 9 - Uterus with embryo, rat, t.s.
- 10 - Vagina, rabbit, t.s.
- 11 - Mammary gland, cow, t.s. active stage
- 12 - Placenta, human, t.s.

- 13 - Umbilical cord, human, t.s.
- 14 - Mouse embryo, l.s.

[Cat #: JL-24CHM](#)

Endocrine System Slide Set

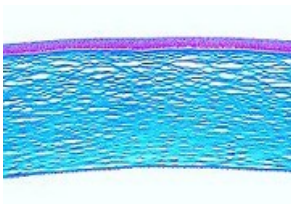


6 slides

- 1 - Pituitary gland (hypophysis), human, t.s.
- 2 - Pineal gland (epiphysis), sheep, l.s.
- 3 - Thyroid gland, sheep, t.s.
- 4 - Pancreas with islets of Langerhans, cat, t.s.
- 5 - Adrenal gland, cat, t.s.
- 6 - Corpus luteum in ovary of pig, t.s.

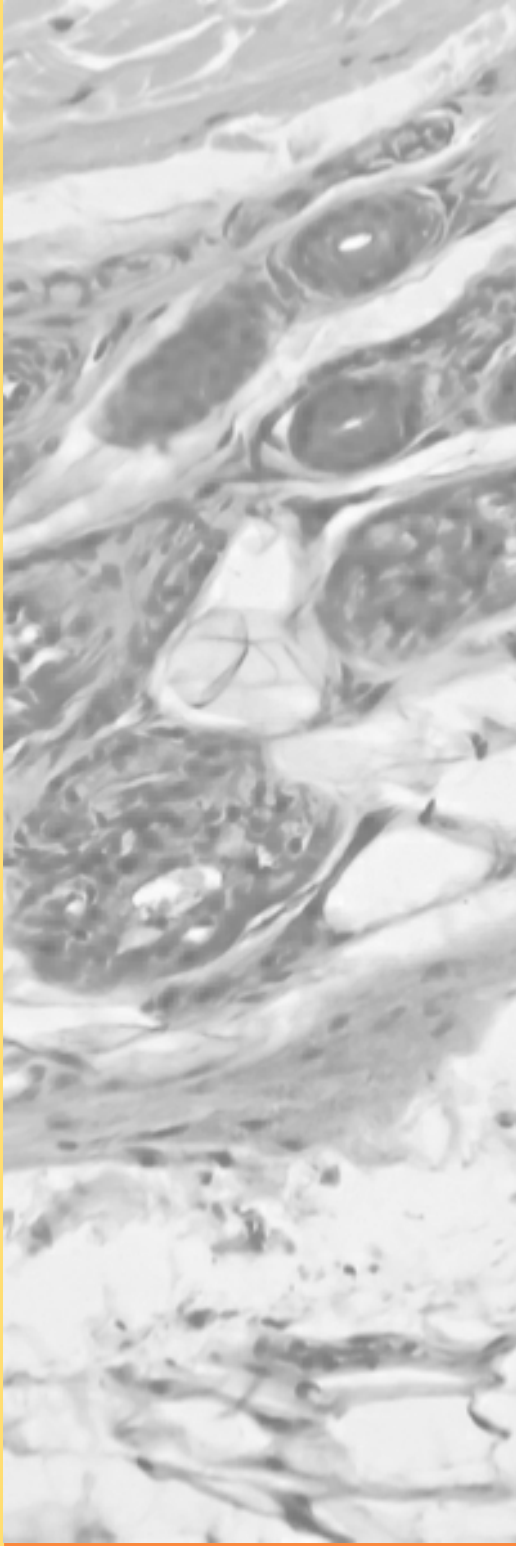
[Cat #: JL-25CHM](#)

Sensory Organs Slide Set



10 slides

- 1 - Tongue, rabbit, t.s., papillae with taste buds
- 2 - Touch corpuscles in human skin, t.s.
- 3 - Olfactory epithelium, dog, t.s.
- 4 - External and internal ear with eardrum and cochlea, l.s.
- 5 - Eye, retina, human, t.s.
- 6 - Eye, optic nerve, human, t.s.
- 7 - Eye, t.s. through cornea, iris and ciliary body
- 8 - Eye, cornea of cow, t.s.
- 9 - Eyelid, cat, t.s. showing Meibomian gland
- 10 - Eye, entrance of optic nerve in the retina, t.s.



P.O Box 136,
MT DRUITT N.S.W 2770

Australia

Tele: (02) 9675 7750

Fax: (02) 9675 7702

<http://www.msmedia.com.au>