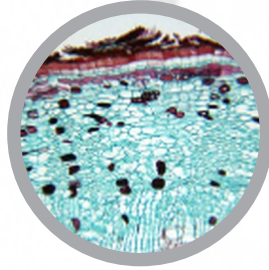
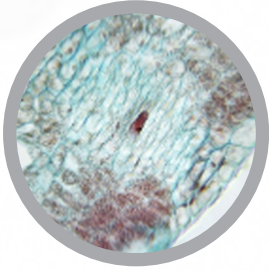


BOTANY SLIDE SETS

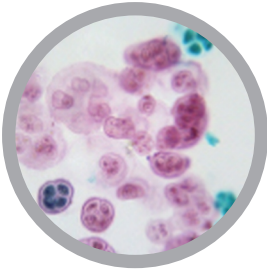
Cat #: CH-BOT1 - LEAF STEM AND ROOT SLIDE SET - 58 slides



- 1 - Leaf of *Nerium indicum* t.s. (show leaf of xerophyte)
- 2 - Water hyacinth petiole t.s. (show leaf of hydrophyte)
- 3 - Leaf of *Gossypium hirsutum* sec. (show abscission layer)
- 4 - Leaf of rapeseed margin sliced sec.
- 5 - Leaf venation w.m.
- 6 - Leaf of aloe t.s.
- 7 - Lower epidermis of dianthus leaf w.m.
- 8 - Leaf of camellia sec. (show ring pores)
- 9 - Lower epidermis of chinese cabbage w.m. (stoma)
- 10 - Leaf of ficus microcarpa t.s. (show cystolith)
- 11 - Upper epidermis of chrysanthemum leave w.m. (showing trichoma)
- 12 - Petiole of apium graveolens l.s.
- 13 - Cotton leaf flat leather w.m.
- 14 - Leaf of cycad t.s.
- 15 - Leaf of tea t.s.
- 16 - Leaf of potamogeton grass t.s.
- 17 - Heliophyte leave of oak t.s.
- 18 - Shade leave of oak t.s.
- 19 - Stem of monocotyledon t.s. (show closed bundle)(*Zea mays*)
- 20 - Stem of dicotyledon t.s. (show open bundle)(*Helianthus annuus*)
- 21 - Tip stem of hydrilla verticillata l.s. (show apical meristem)
- 22 - Stem of hydrilla verticillata t.s. (show aerating tissue)
- 23 - Old stem of ricinus communis t.s. (show cambium ring)
- 24 - Stem of oryza satira (geniculum) t.s. (show air cavity)
- 25 - Stem of zea mays t.s. (intergeniculum)
- 26 - Stem of triticum aestivum (geniculum)t.s.
- 27 - Stem apex of buxus sinica l.s. (apical bud)
- 28 - Young stem of tilia t.s. (show primary texture)
- 29 - Young stem of tilia t.s. (show primary structure)
- 30 - Mulberry bark t.s. (show lenticel)
- 31 - Bud of populus tomentosa l.s.
- 32 - Stem of pine t.s. (show resin duct)
- 33 - Stem of cedarwood sec. (showing bordered pit)
- 34 - Overground stem of moso bamboo t.s.
- 35 - Stem of club moss t.s. (show protosteles)
- 36 - Stem of herbaceous dicot t.s.
- 37 - Bark of privet t.s.
- 38 - Underground stem of pteris nervosa t.s.
- 39 - Prop root of *Zea mays* t.s. (show thickening endodermis)
- 40 - Root of *Vicia faba* l.s. (show formation of lateral root)
- 41 - Root nodule of *Vicia faba* sec.
- 42 - Plant root t.s. (showing Casparian dots)
- 43 - Young root of *Triticum aestivum* t.s.
- 44 - Old root of *Triticum aestivum* t.s.
- 45 - Root tip of *Triticum aestivum* l.s.
- 46 - Root tip of *Triticum aestivum* t.s.
- 47 - Young root of *Ranunculus japonicus* t.s. (hydrophilous)
- 48 - Young root of *Ranunculus japonicus* t.s. (xerophil)
- 49 - Old root of *Oryza sativa* t.s. (show air cavity)
- 50 - Mycorrhiza of orchid sec.
- 51 - Aerial root of bracket plant t.s.
- 52 - Climbing root of Chinese ivy
- 53 - Prop root of *Ficus microcarpa* t.s.
- 54 - Parasitic root of *Cuscuta chinensis* sec.
- 55 - Modified root of *Beta vulgaris* Linn t.s.
- 56 - Rhizome of celery l.s.
- 57 - Root of rhizoma nardostachyos t.s.
- 58 - Root of *Ipomoea aquatica* sec. (show storage tissue)

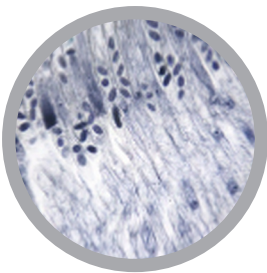
For slide set prices see [page 40](#). If you are interested in purchasing individual slides [CLICK HERE](#)

Cat #: CH-BOT2 - ALGAE SLIDE SET - 38 slides



- 1 - Chroococcus w.m.
- 2 - Microcystis w.m.
- 3 - Ocillatoria w.m.
- 4 - Spirulina w.m.
- 5 - Nostoc w.m. (hematoxylin staining)
- 6 - Anabaena w.m.
- 7 - Euglena w.m.
- 8 - Cyclotella w.m.
- 9 - Navicula w.m.
- 10 - Pennales w.m.
- 11 - Melosira w.m.
- 12 - Chlamydomonas w.m.
- 13 - Volvox w.m.
- 14 - Scenedesmus w.m.
- 15 - Ulothrix w.m.
- 16 - Cladophora w.m.
- 17 - Pandorina w.m.
- 18 - Pediatrulum w.m.
- 19 - Micractinium w.m.
- 20 - Botryococcus w.m.
- 21 - Hydrodictyon w.m.
- 22 - Cosmarium w.m.
- 23 - Chlorella w.m.
- 24 - Conjugation of spirogyra w.m.
- 25 - Oedogonium w.m.
- 26 - Mougeotia w.m.
- 27 - Draparnaldia w.m.
- 28 - Zygnema w.m.
- 29 - Coelosphaerium w.m.
- 30 - Brachyblast of chara w.m.
- 31 - Top of chara l.s.
- 32 - Carpospore of porphyra w.m.
- 33 - Spermatangium of porphyra w.m.
- 34 - Porphyra t.s.
- 35 - Laminaria t.s. (show sporange)
- 36 - Undaria pinnatifida sec.
- 37 - Cladosiphon okamuranus w.m.
- 38 - Porphyridium w.m.

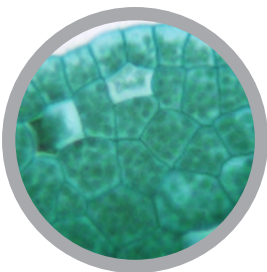
Cat #: JL-BOT3 - FUNGI AND LICHEN SLIDE SET - 20 slides



- 1 - Sporangium of Stemonitis w.m.
- 2 - Saprolegnia w.m.
- 3 - Rhizopus w.m.
- 4 - Saccharomyces w.m.
- 5 - Candida albicans smear
- 6 - Peziza l.s.
- 7 - Morchella sec.
- 8 - Aspergillus w.m.
- 9 - Agaricus sec.
- 10 - Tremella fuciformis sec.
- 11 - Ganoderma sec.
- 12 - Auricularia auricula sec.
- 13 - Ustilago maydis of corn w.m.
- 14 - Pileus of ganoderma lucidium l.s.
- 15 - Pileus of ganoderma lucidium t.s.
- 16 - Pileus of chinese ganoderma l.s.
- 17 - Heteromerous lichen sec.
- 18 - Lichen apothecium sec.
- 19 - Foliose lichen sec.
- 20 - Fruticose lichen

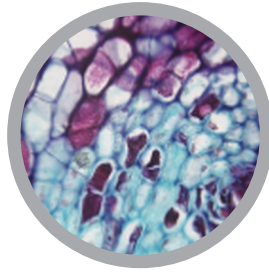
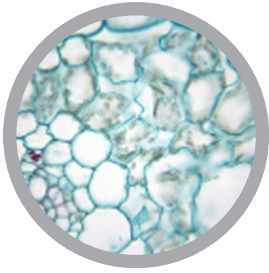
For slide set prices see [page 40](#). If you are interested in purchasing individual slides [CLICK HERE](#)

Cat #: JL-BOT4 - BRYOPHYTES AND PTERIDOPHYTES SLIDE SET - 36 slides



- 1 - Frond of marchantia sec.
- 2 - Cyphella of marchantia sec.
- 3 - Gemma of marchantia sec.
- 4 - Antheridiophore of marchantia l.s.
- 5 - Archegoniophore of marchantia l.s.
- 6 - Sporophyte of marchantia l.s.
- 7 - Funaria w.m.
- 8 - Blade of funaria w.m.
- 9 - Blade of funaria t.s.
- 10 - Stem of funaria t.s.
- 11 - Polliondium of funaria l.s.
- 12 - Archegonium of funaria l.s.
- 13 - Capsule of funaria l.s.
- 14 - Protonema of funaria w.m.
- 15 - Capsule of anthoceros t.s.
- 16 - Anthoceros w.m.
- 17 - Frond of anthoceros sec.
- 18 - Sporophyll spike of lycopodiopsida l.s.
- 19 - Macrosporangium of selaginella l.s.
- 20 - Microsporangium of selaginella l.s.
- 21 - Stem of selaginella t.s. (show polystele)
- 22 - Sporophyll of pteridium sec.
- 23 - Prothallium of pteridium w.m.
- 24 - Subterranean stem of pteridium t.s.
- 25 - Prothallium juvenile sporophyte of fern w.m.
- 26 - Stem of gleicheniaceae t.s. (showing protostele)
- 27 - Stem of psilotum t.s. (show stellatestele)
- 28 - Stem of lycopodium t.s. (show dicyostele)
- 29 - Stem of equisetum arvense t.s.
- 30 - Stem of equisetum arvense l.s.
- 31 - Strobilus of equisetum arvense l.s.
- 32 - Spore of equisetum arvense w.m. (showing elater)
- 33 - Leave of cyrtomium fortunei sec.
- 34 - Sporocarp of salvinia sec.
- 35 - Sporocarp of azolla imbricata sec.
- 36 - Leaf of platycerium t.s.

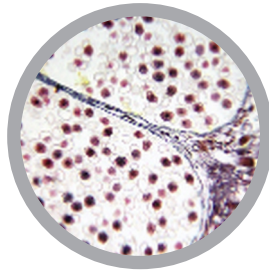
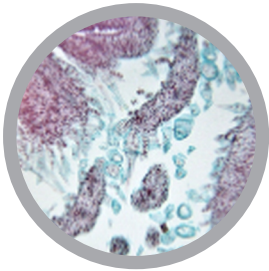
Cat #: JL-BOT5 - BOTANY - CELLS AND STRUCTURES SLIDE SET - 37 slides



- 1 - Epidermis cells of capsicum frutescens fruit w.m. (show simple pit-pair)
- 2 - Lower epidermis of apple w.m. (showing epidermal hair)
- 3 - Lower epidermis of pelargonium hortorum leaf w.m. (show glandular setae)
- 4 - Epidermis of mentha haplocalyx leaf w.m. (show glandular scale)
- 5 - Juglans regia shell w.m. (show stone cell)
- 6 - Zingiber officinale sec. (show secretory cells and laticiferous tube)
- 7 - Leaf of ficus microcarpa t.s. (show cystolith)
- 8 - Stem of pinus t.s. (show rosin duct)
- 9 - Peel of citrus reticulata sec. (show secretory cavity)
- 10 - Root of ipomoea aquatica sec. (show storage tissue)
- 11 - Stem of myriophyllum verticillatum t.s. (show aerating tissue)
- 12 - Leaf of nymphaea tetragona t.s. (show aerating tissue)
- 13 - Prop root of zea mays t.s. (show thickening endodermis)

- 14 - Root of vicia faba l.s. (show formation of lateral root)
- 15 - Young root of ranunculus japonicus t.s. (hydrophilous)
- 16 - Young root of ranunculus japonicus t.s. (xerophile)
- 17 - Old root of oryza sativa t.s. (show air cavity)
- 18 - Petiole of dahlia pinnata t.s. (show collenchyma)
- 19 - Stem macerated of vitis vinifera w.m. (show sclerenchyma)
- 20 - Root of allium sativum t.s. (show thickening endodermis)
- 21 - Root of taraxacum mongolicum l.s.. (show non-articulate latex duct)
- 22 - Tip Stem of hydrilla verticillata l.s. (show apical meristem)
- 23 - Stem of hydrilla verticillata t.s. (show aerating tissue)
- 24 - Stem of zea mays t.s. (intergeniculum)
- 25 - Young stem of gossypium hirsutum t.s. (show primary structure)
- 26 - Old stem of gossypium hirsutum t.s. (show secondary structure)
- 27 - Old stem of ricinus communis t.s. (show cambium ring)
- 28 - Vascular cambium of robinia pseudoacacia w.m. (show superposed)
- 29 - Vascular cambium of eucommia ulmoides w.m. (show non-superposed)
- 30 - Stem of club moss t.s. (show protostele)
- 31 - Monocotyledon and dicotyledon t.s.
- 32 - Old and young dicotyledon
- 33 - Leaf of nerium indicum t.s. (show leaf of xerophyte)
- 34 - Leaf of aloe vera var.chinensis (xerophyte) t.s.
- 35 - Leaf of water lily t.s. (show leaf of hydrophyte)
- 36 - Water hyacinth petiole t.s. (show leaf of hydrophyte)
- 37 - Leaf of Gossypium hirsutum sec. (show abscission layer)

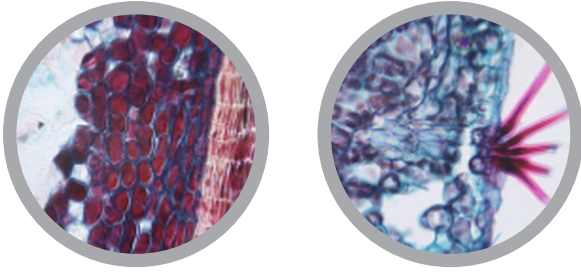
Cat #: JL-BOT6 - BOTANY - REPRODUCTION SLIDE SET - 39 slides



- 1 - Anther of lilium brownii var.viridulum t.s. (sporogenous stage)
- 2 - Anther of lilium brownii var.viridulum Baker t.s. (show tetrad)
- 3 - Ovary of lilium brownii var.viridulum t.s. (show ovule structure)
- 4 - Young embryo sac stage of lilium brownii var.viridulum ovary sec.
- 5 - Mature embryo sac stage of lilium brownii var.viridulum ovary sec.
- 6 - Stamen of calyxes t.s.
- 7 - Pollen of lily w.m. (2-celled pollen)
- 8 - Pollen germination w.m.
- 9 - Microstrobilus of pinus l.s. (male cone)
- 10 - Ovulatestrobilus of pinus l.s. (female cone)
- 11 - Peach blossom bud l.s.
- 12 - Sunflower flower l.s.

- 13 - Ovary of corn poppy t.s.
- 14 - Ovary of corn poppy l.s.
- 15 - Receptacle of syzygium aromaticum sec.
- 16 - Young anther of triticum aestivum t.s.
- 17 - Mature anther of triticum aestivum t.s.
- 18 - Flower of triticum aestivum w.m.
- 19 - Flower of triticum aestivum t.s.
- 20 - Stigma of triticum aestivum t.s.
- 21 - 2-cell stage of proembryo of capsella bursa-pastoris w.m.
- 22 - 4-cell stage of proembryo of capsella bursa-pastoris w.m.
- 23 - Globular embryo of capsella bursa-pastoris sec.
- 24 - Heart-shaped embryo of capsella bursa-pastoris sec.
- 25 - Torpedo stage embryo of capsella bursa-pastoris sec.
- 26 - Cane embryo of capsella bursa-pastoris sec.
- 27 - Mature embryo of capsella bursa-pastoris sec.
- 28 - Proembryo stage of capsella bursa-pastoris sec.
- 29 - Differentiation period of capsella bursa-pastoris embryo sec.
- 30 - Zoosporangium (Achlya cryzae)
- 31 - Chlamydo-spore (Fusarium oxysporum)
- 32 - Sporangium (Physoderma maydis)
- 33 - Oospore (Sclerospora graminicola)
- 34 - Ascus ascospore (Ascobolaceae sp.)
- 35 - Apothecium (Sclerotinia sclerotiorum)
- 36 - Conidia
- 37 - Sclerotium (Sunflower)
- 38 - Zygosperms (Mucor sp.)
- 39 - Basidium and basidiospore (Coprinus sp.)

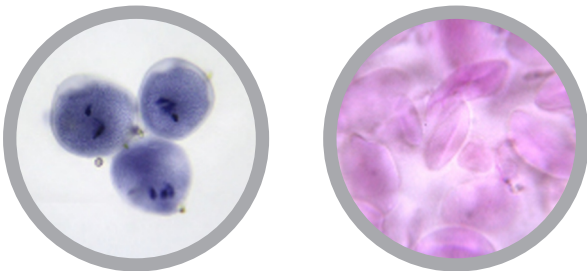
Cat #: JL-BOT7 - TREES SLIDE SET - 55 slides



- 1 - Root of *Quercus variabilis* t.s.
- 2 - Root of *Acer mono* t.s.
- 3 - Root of *Cephalotaxus fortunei* t.s.
- 4 - Annual stem of *Populus* t.s.
- 5 - Biennial stem of *Populus* t.s.
- 6 - 3-year stem of *Populus* t.s.
- 7 - Stem of African willow t.s.
- 8 - Stem of *Salix matsudana* t.s.
- 9 - Young Stem of Weeping willow t.s.
- 10 - Old Stem of Weeping willow t.s.
- 11 - Bud of *Populus tomentosa* l.s.
- 12 - Top bud of Poplar l.s.
- 13 - Top bud of Oak tree l.s.
- 14 - Stem of Masson pine t.s.
- 15 - Stem of Masson pine l.s.
- 16 - Stem of Masson pine sec.
- 17 - 3-Year Stem of Masson pine t.s.
- 18 - Stem of Maple t.s.
- 19 - Stem of Elm t.s.
- 20 - Heliophyte leaf of Oak t.s.
- 21 - Shade leaf of Oak t.s.
- 22 - Willow petioles abscission layer sec.

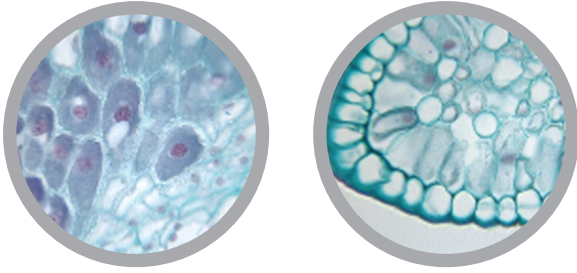
- 23 - Leaf of Maidenhair tree t.s.
- 24 - Leaf of Weeping willow t.s.
- 25 - Leaf of Dryland willow t.s.
- 26 - Leaf of Siberian elm t.s.
- 27 - Leaf of Maple t.s.
- 28 - Young stem of *Tilia* t.s. (show primary texture)
- 29 - Young stem of *Tilia* t.s. (show primary structure)
- 30 - Annual stem of *Tilia* t.s.
- 31 - Biennial stem of *Tilia* t.s.
- 32 - 3-year stem of *Tilia* t.s.
- 33 - Perennial stem of *Tilia* t.s.
- 34 - *Tilia* macerated w.m.
- 35 - Bark of *Quercus variabilis* sec.
- 36 - Xylem macerated of *Quercus variabilis* w.m.
- 37 - Stem of *Salix matsudana* t.s.
- 38 - Stem of Cedarwood sec. (showing bordered pit)
- 39 - Stem of Cedarwood t.s.
- 40 - Woody stem of Pine
- 41 - Young stem of Yew t.s.
- 42 - Stem of *Metasequoia* t.s.
- 43 - Stem of *Cephalotaxus fortunei* t.s.
- 44 - Stem of *Prunus davidiana* t.s.
- 45 - Stem of *Acer palmatum* t.s.
- 46 - Stem of Southern magnolia t.s.
- 47 - Stem of Magnolia t.s.
- 48 - Stem of Magnolia l.s.
- 49 - Stem of *Prunus mume* t.s.
- 50 - Leaf of Cedar t.s.
- 51 - Leaf of Magnolia t.s.
- 52 - Leaf of Ash t.s.
- 53 - Leaf of *Salix* t.s.
- 54 - Leaf of *Fraxinus* t.s.
- 55 - Magnolia flower l.s.

Cat #: JL-BOT8 - GRAINS SLIDE SET - 41 slides



- 1 - Lower Epidermis of *triticum aestivum* leaf w.m.
- 2 - Young root of *triticum aestivum* t.s.
- 3 - Old root of *triticum aestivum* t.s.
- 4 - Root tip of *triticum aestivum* l.s.
- 5 - Root tip of *triticum aestivum* t.s.
- 6 - Primary Stem of *triticum aestivum* t.s.
- 7 - Stem of *triticum aestivum* (geniculum) t.s.
- 8 - Caryopsis of *triticum aestivum* sec.
- 9 - Leaf of *triticum aestivum* t.s.
- 10 - Young anther of *triticum aestivum* t.s.
- 11 - Mature anther of *triticum aestivum* t.s.
- 12 - Flower of *triticum aestivum* w.m.
- 13 - Flower of *triticum aestivum* t.s.
- 14 - Stigma of *triticum aestivum* t.s.
- 15 - Pollen of *triticum aestivum* w.m.

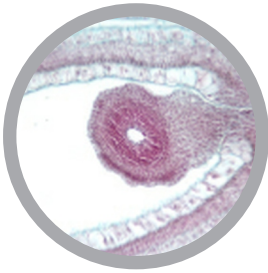
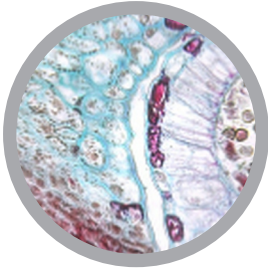
- 16 - Seed of *triticum aestivum* l.s.
- 17 - Bran of *triticum aestivum* w.m.
- 18 - Starch grain of *triticum aestivum* w.m.
- 19 - Metazoa proembryo of wheat sec.
- 20 - Pear shape proembryo of wheat sec.
- 21 - Differentiation period of wheat embryo sec.
- 22 - Maturity embryo of wheat sec.
- 23 - Lower Epidermis of *zea mays* leaf w.m.
- 24 - Stem of monocotyledon t.s. (show closed bundle)(*zea mays*)
- 25 - Seed of *zea mays* l.s.
- 26 - Root tip of *zea mays* l.s.
- 27 - Young root of *zea mays* t.s.
- 28 - Root of *zea mays* t.s.
- 29 - Prop root of *zea mays* t.s. (show thickening endodermis)
- 30 - Stem apex of *zea mays* l.s.
- 31 - Stem of *zea mays* l.s.
- 32 - Stem of *zea mays* t.s. (intergeniculum)
- 33 - Inter-calary meristem of *zea mays* l.s.
- 34 - Leaf of *zea mays* t.s.
- 35 - Starch grain of *zea mays* w.m.
- 36 - Root tip of *oryza sativa* l.s.
- 37 - Young root of *oryza sativa* t.s.
- 38 - Old root of *oryza sativa* t.s. (show air cavity)
- 39 - Stem of *oryza sativa* (geniculum) t.s. (show air cavity)
- 40 - Starch grain of *oryza sativa* w.m.
- 41 - Leaf of rice t.s.



- 1 - Stem tuber of *solanum tuberosum* sec.
- 2 - Stem of potato t.s.
- 3 - Stem of sweet potato t.s.
- 4 - Stem apex of sweet potato l.s.
- 5 - Leaf of potato t.s.
- 6 - Flower of potato l.s.
- 7 - Root of *daucus carota* var. *sativa* t.s.
- 8 - Modified root of *beta vulgaris* t.s.
- 9 - Epidermis of *allium cepa* w.m.
- 10 - Root tip of *allium cepa* l.s. (show mitotic division)
- 11 - Chromosome of *allium* w.m.
- 12 - Young root of *allium fistulosum* t.s.
- 13 - Root of *allium sativum* t.s. (show thickening endodermis)
- 14 - Root of *allium tuberosum* t.s.
- 15 - Root tip of *allium cepa* t.s.
- 16 - Root of *allium cepa* t.s.
- 17 - Onion bulb l.s.
- 18 - Petiole of *apium graveolens* l.s.
- 19 - Rhizome of celery l.s.
- 20 - Stem of celery t.s.
- 21 - Stem of *cucurbita moschata* t.s. (show tracheid)
- 22 - Stem of *cucurbita moschata* l.s.
- 23 - Stem macerated of *cucurbita moschata* w.m. (show trachea type)
- 24 - Old root of *cucurbita moschata* t.s.
- 25 - Young root of *cucurbita moschata* t.s.
- 26 - Pumpkin petiole t.s.
- 27 - Ovary of pumpkin t.s.
- 28 - Flower of cucumber l.s.
- 29 - Ovary of cucumber t.s.
- 30 - Root of eggplant t.s.
- 31 - Leaf of spinach t.s.
- 32 - Epidermis cells of *capsicum frutescens* fruit w.m. (show simple pit-pair)
- 33 - Stem of pepper t.s.
- 34 - Branched stellate hair of *brassica campestris* var. *oleifera* w.m.
- 35 - Flower bud of *brassica pekinensis* l.s.
- 36 - Flower bud of *brassica pekinensis* t.s.
- 37 - Flower of *brassica campestris* l.s.
- 38 - Flower of *brassica campestris* t.s.
- 39 - Stigma of *brassica campestris* var. *oleifera* l.s.
- 40 - Pollen of *brassica campestris* var. *oleifera* w.m.
- 41 - Lower Epidermis of chinese cabbage w.m. (stoma)
- 42 - Stem of cabbage t.s.
- 43 - Berry of *lycopersicon esculentum* sec.

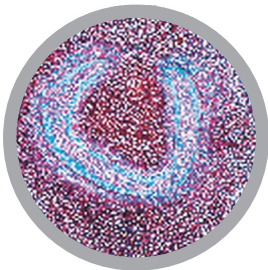
- 44 - Leaf of leek t.s.
- 45 - Lower epidermis of *vicia faba* leaf w.m.
- 46 - Root tip of *vicia faba* t.s.
- 47 - Root tip of *vicia faba* (show mitosis)
- 48 - Young root of *vicia faba* t.s.
- 49 - Old root of *vicia faba* t.s.
- 50 - Lateral root of *vicia faba* t.s.
- 51 - Root of *vicia faba* l.s. (show formation of lateral root)
- 52 - Root tip of *vicia faba* l.s. (hematoxylin staining)
- 53 - Root nodule of *vicia faba* sec.
- 54 - Young stem of *vicia faba* t.s.
- 55 - Old stem of *vicia faba* t.s.
- 56 - Leaf of *vicia faba* t.s.
- 57 - Seed of soybean l.s.
- 58 - Young root of soybean t.s.
- 59 - Old root of soybean t.s.
- 60 - Root of soybean t.s.
- 61 - Root of mung bean t.s.
- 62 - Root of pea t.s.
- 63 - Root tip of pea t.s.
- 64 - Root nodule of soybean sec.
- 65 - Stem of soybean t.s.
- 66 - Flower of pea l.s.

Cat #: JL-BOT10 - BOTANY - FRUITS SLIDE SET - 57 slides



- 1 - Lower epidermis of apple w.m. (showing epidermal hair)
- 2 - Young root of apple t.s.
- 3 - Old root of apple t.s.
- 4 - Bud of apple l.s.
- 5 - The top bud of pear l.s.
- 6 - Stem of pear t.s.
- 7 - Stem tip of pear l.s.
- 8 - Stem of malus spectabilis t.s.
- 9 - Stem of apple t.s.
- 10 - Stem of apple l.s.
- 11 - Apple petioles base t.s.
- 12 - Leaf of apple t.s.
- 13 - Leaf of pear t.s.
- 14 - Pollen of pear w.m.
- 15 - Flower of pear l.s.
- 16 - Flower of apple l.s.
- 17 - Stem macerated of vitis vinifera w.m. (show sclerenchyma)
- 18 - Root of vitis vinifera t.s.
- 19 - Young stem of grape t.s.
- 20 - Stem of grape t.s.
- 21 - Grape petiole t.s.
- 22 - Leaf of grapes t.s.
- 23 - Grape buds l.s.
- 24 - Fruit of grapes t.s.
- 25 - Stem of strawberry t.s.
- 26 - Fruit of strawberry l.s.
- 27 - Bark of mulberry macerated w.m.
- 28 - Stem of mulberry stem t.s. (show primary structure)
- 29 - Branch of mulberry t.s.
- 30 - Mulberry bark t.s. (show lenticel)
- 31 - Stem of bark of paper mulberry t.s.
- 32 - Leaf of mulberry t.s.
- 33 - Leaf of kiwi berry t.s.
- 34 - Leaf of mulberry t.s.
- 35 - Leaf of wolfberry (gogi berry) t.s.
- 36 - Ovary of mulberry l.s.
- 37 - Flower of elderberry l.s.
- 38 - Fruit of mulberry l.s.
- 39 - Old root of peach t.s.
- 40 - Bud of peach l.s.
- 41 - Bud of cherry l.s.
- 42 - Stem of peach t.s.
- 43 - Young stem of peach t.s.
- 44 - Stem of flowering peach t.s.
- 45 - Stem of cherry t.s.
- 46 - Peach petiole t.s.
- 47 - Leaf of peach t.s.
- 48 - Leaf of flowering peach t.s.
- 49 - Leaf of plum flower t.s.
- 50 - Leaf of cherry blossoms t.s.
- 51 - Leaf of cherry t.s.
- 52 - Leaf of petiole cherry nectary sec.
- 53 - Pollen of peach w.m.
- 54 - Peach blossom bud l.s.
- 55 - Flower of peach l.s.
- 56 - Fruit of peach l.s.
- 57 - Stem of apricot t.s.

Cat #: JL-25BM - ARRANGEMENTS AND TYPES OF VASCULAR BUNDLES SLIDE SET - 13 slides



- 1 - Protoste. Psilotum, stem t.s.
- 2 - Actinoste. Lycopodium, stem t.s.
- 3 - Polyste. Pteridium, rhizome t.s. showing concentric vascular bundles with inner xylem
- 4 - Ectophloic siphonoste. Osmunda, rhizome t.s.
- 5 - Amphiphloic siphonoste. Adiantum, rhizome t.s.
- 6 - Dictyoste. Polypodium, rhizome t.s.
- 7 - Eustele. Ranunculus, stem t.s., open collateral bundles
- 8 - Eustele. Lamium, stem t.s.
- 9 - Eustele. Cucurbita pepo, stem t.s., bicollateral bundles
- 10 - Atactoste. Zea mays, stem t.s., closed collateral bundles
- 11 - Arrangement of bundles similar to atactoste in a dicot plant. Podophyllum, stem t.s.
- 12 - Concentric vascular bundles with outer xylem. Convallaria, rhizome t.s.
- 13 - Radial concentric vascular bundle. Ranunculus, root t.s.

For slide set prices see [page 40](#). If you are interested in purchasing individual slides [CLICK HERE](#)