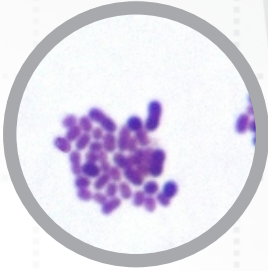


# BACTERIOLOGY SLIDE SETS

## Cat #: CH-BACT1 - COCCUS SLIDE SET - 14 slides



- 1 - Streptococcus faecalis smear
- 2 - Streptococcus pyogenes smear
- 3 - Streptococcus sanguinis smear
- 4 - Streptococcus lactis smear
- 5 - Micrococcus tetragenus smear
- 6 - Sarcina smear
- 7 - Staphylococcus epidermis smear
- 8 - Staphylococcus aureus encephalitis
- 9 - Staphylococcus aureus smear
- 10 - Neisseria gonorrhoeae smear (pure culture)
- 11 - Neisseria gonorrhoeae smear (pathological specimen)
- 12 - Neisseria meningitidis smear (meningococcus)
- 13 - Candida albicans smear
- 14 - Azotobacter chroococcum smear (capsule)

## Cat #: CH-BACT2 - BACILLUS SLIDE SET - 29 slides

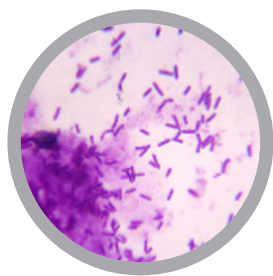


- 1 - Escherichia coli smear
- 2 - Cryptococcus neoformans
- 3 - Salmonella typhi smear (showing flagella)(silver staining)
- 4 - Aerobacter aerogenes smear
- 5 - Acetobacter aceti smear
- 6 - Shigella sonnei smear
- 7 - Bacillus erysipelas smear
- 8 - Bacillus Thuringiensis smear
- 9 - Bacillus cereus smear
- 10 - Bacillus subtilis smear (showing spore)
- 11 - Bacillus anthracis smear
- 12 - Brucella abortus smear
- 13 - Pasteurella maltocida smear
- 14 - Listeria monocytogenes smear
- 15 - Mycobacterium tuberculosis smear
- 16 - Corynebacterium diphtheriae smear
- 17 - Clostridium perfringens smear
- 18 - Clostridium botulinum smear
- 19 - Clostridium tetani smear
- 20 - Pseudomonas aeruginosa smear
- 21 - Bordetella pertussis smear
- 22 - Agrobacterium tumefaciens smear
- 23 - Proteus vulgaris smear
- 24 - Nitrobacter smear
- 25 - Vibrio cholerae
- 26 - Yersinia pestis
- 27 - Bifidobacterium
- 28 - Propionibacterium
- 29 - Campylobacter jejuni

## Cat #: CH-BACT6 - BACTERIA PATHOGENS SLIDE SET - 29 slides



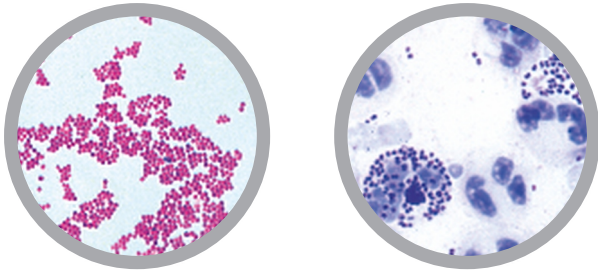
- 1 - Streptococcus faecalis smear
- 2 - Neisseria gonorrhoeae smear (pure culture)
- 3 - Candida albicans smear
- 4 - Streptococcus pyogenes smear
- 5 - Staphylococcus aureus smear
- 6 - Streptococcus sanguinis smear
- 7 - Escherichia coli smear
- 8 - Cryptococcus neoformans
- 9 - Salmonella typhi smear (showing flagella)(silver staining)
- 10 - Aerobacter aerogenes smear
- 11 - Bacillus anthracis smear
- 12 - Clostridium perfringens smear
- 13 - Shigella sonnei smear
- 14 - Salmonella typhi smear
- 15 - Brucella abortus smear
- 16 - Pasteurella maltocida smear
- 17 - Listeria monocytogenes smear
- 18 - Mycobacterium tuberculosis smear
- 19 - Corynebacterium diphtheriae smear
- 20 - Clostridium botulinum smear
- 21 - Clostridium tetani smear
- 22 - Pseudomonas aeruginosa smear
- 23 - Bordetella pertussis smear
- 24 - Bacillus cereus smear
- 25 - Proteus vulgaris smear
- 26 - Vibrio cholerae
- 27 - Yersinia pestis
- 28 - Campylobacter jejune
- 29 - Neisseria meningitidis smear (meningococcus)



- 1 - Streptococcus faecalis smear
- 2 - Streptococcus sanguinis smear
- 3 - Streptococcus lactis smear
- 4 - Streptococcus pyogenes smear
- 5 - Micrococcus tetragenus smear
- 6 - Staphylococcus epidermis smear
- 7 - Staphylococcus aureus encephalitis
- 8 - Staphylococcus aureus smear
- 9 - Sarcina smear
- 10 - Candida albicans smear
- 11 - Bacillus subtilis smear (showing spore)
- 12 - Bacillus anthracis smear
- 13 - Clostridium perfringens smear
- 14 - Bacillus erysipelas smear
- 15 - Bacillus Thuringiensis smear
- 16 - Listeria monocytogenes smear
- 17 - Corynebacterium diphtheriae smear
- 18 - Clostridium botulinum smear
- 19 - Clostridium tetani smear
- 20 - Bacillus cereus smear
- 21 - Bifidobacterium
- 22 - Propionibacterium
- 23 - Neisseria gonorrhoeae smear (pure culture)
- 24 - Neisseria gonorrhoeae smear (pathological specimen)
- 25 - Azotobacter chroococcum smear (capsule)
- 26 - Escherichia coli smear
- 27 - Salmonella typhi smear (showing flagella)(silver staining)
- 28 - Aerobacter aerogenes smear
- 29 - Shigella sonnei smear
- 30 - Salmonella typhi smear
- 31 - Brucella abortus smear
- 32 - Pasteurella maltocida smear
- 33 - Pseudomonas aeruginosa smear
- 34 - Bordetella pertussis smear
- 35 - Agrobacterium tumefaciens smear
- 36 - Proteus vulgaris smear
- 37 - Acetobacter aceti smear
- 38 - Nitrobacter smear
- 39 - Vibrio cholerae
- 40 - Yersinia pestis
- 41 - Campylobacter jejuni
- 42 - Leptospira w.m.
- 43 - Neisseria meningitidis smear (meningococcus)

For slide set prices see [page 31](#). If you are interested in purchasing individual slides [CLICK HERE](#)

Cat #: JL-1BPM - PATHOGENIC BACTERIA SLIDE SET - 25 slides

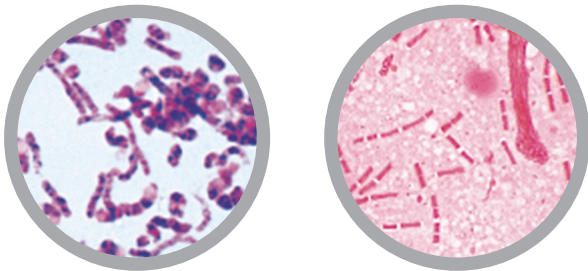


- 1 - *Diplococcus pneumoniae*, causing croupous pneumonia, smear
- 2 - *Neisseria gonorrhoeae*, causing gonorrhoea, smear \*
- 3 - *Neisseria meningitidis* (*intracellularis*), causing epidemic meningitidis, smear from culture
- 4 - *Staphylococcus aureus*, pus organism, smear from culture
- 5 - *Streptococcus pyogenes*, smear from culture showing short chains
- 6 - *Corynebacterium diphtheriae*, smear from culture
- 7 - *Mycobacterium tuberculosis*, smear from positive sputum stained after Ziehl-Neelsen
- 8 - *Bacterium erysipelatos* (*Erysipelothrix rhusiopathiae*), smear
- 9 - *Brucella abortus*, causing abortion in cattle (Bang disease), smear
- 10 - *Proteus vulgaris*, inflammation of urinary system, smear from culture
- 11 - *Escherichia coli*, colon bacteria, possibly pathogen, smear
- 12 - *Eberthella typhi*, causing typhoid fever, smear

- 13 - *Salmonella paratyphi*, paratyphoid fever, smear
- 14 - *Hemophilus influenzae* (Pfeiffer), smear
- 15 - *Klebsiella pneumoniae* (Friedlander), causing pneumonia smear
- 16 - *Pasteurella* (*Yersinia*) *pestis*, bubonic plague, smear
- 17 - *Salmonella enteritidis*, causes meat poisoning, smear
- 18 - *Shigella dysenteriae*, causes bacillary dysentery, smear
- 19 - *Bacillus anthracis*, causes wool sorter's disease, smear
- 20 - *Clostridium botulinum*, causing food poisoning, smear
- 21 - *Clostridium septicum*, smear from culture
- 22 - *Clostridium tetani*, causing lockjaw, smear
- 23 - *Clostridium perfringens*, causing gas gangrene, smear
- 24 - *Vibrio comma*, causing Asiatic cholera, smear
- 25 - *Borrelia duttoni* (*Spirochaeta recurrentis*), causes Central African relapsing fever, blood smear with organisms

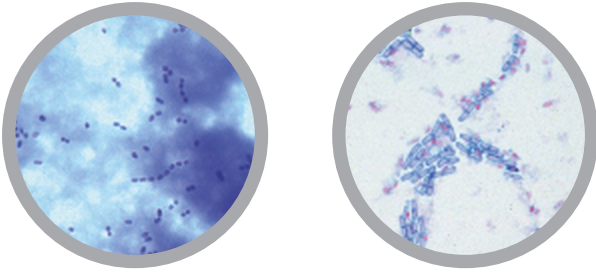
For slide set prices see [page 31](#). If you are interested in purchasing individual slides [CLICK HERE](#)

Cat #: JL-2BPM - BACTERIA BASIC SLIDE SET - 25 slides



- 1 - *Staphylococcus aureus*, pus organism
- 2 - *Sarcina lutea*, chromogenic rods
- 3 - *Streptococcus pyogenes*, pus organism
- 5 - *Bacillus subtilis*, hay bacillus, smear with bacilli and spores
- 4 - *Streptococcus lactis*, milk souring organism, short chains
- 6 - *Bacillus mycoides*, soil organism
- 7 - *Bacillus anthracis*, wool sorters disease
- 8 - *Mycobacterium tuberculosis*, causing tuberculosis
- 9 - *Corynebacterium diphtheriae*, causing diphtheria
- 10 - *Bacterium erysipelatos*, causing red murrain
- 11 - *Rhizobium radicicola*, nitrogen fixing bacteria in root nodules
- 12 - *Proteus vulgaris*, putrefaction
- 13 - *Escherichia coli*, colon bacteria

- 14 - *Eberthella typhi*, causing typhoid fever
- 15 - *Salmonella paratyphi*, causing paratyphoid fever
- 16 - *Vibrio comma*, Asiatic cholera
- 17 - *Shigella dysenteriae*, bacillary dysentery
- 18 - *Hemophilus influenzae*, Pfeiffer bacillus
- 19 - *Spirillum volutans*, from putrid water
- 20 - *Rhodospirillum rubrum*, chromogenic spirilli
- 21 - *Clostridium botulinum* (botulism), causing food poisoning, smear
- 22 - *Spirochaeta duttoni* (*Borrelia recurrentis*), in blood smear
- 23 - Bacteria from mouth, smear with Gram positive and negative rods
- 24 - Bacteria from bread
- 25 - Bacteria from cheese



**Spherical bacteria, cocci**

- 1 - Diplococcus pneumoniae, causing croupous pneumonia, smear
- 2 - Gaffkya tetragena, occurring as tetrads, smear
- 3 - Neisseria gonorrhoeae, causing gonorrhoea, smear \*
- 4 - Neisseria meningitidis (intracellularis), causing epidemic meningitidis, smear from culture
- 5 - Sarcina lutea, chromogenic rods occurring in packets
- 6 - Staphylococcus aureus, pus organism, smear from culture
- 7 - Streptococcus pyogenes, smear from culture showing short chains
- 8 - Streptococcus lactis, milk souring organism, smear from culture showing short chains

**Rod-shaped bacteria, non spore-forming, gram-positive**

- 9 - Corynebacterium diphtheriae, smear from culture
- 10 - Lactobacillus bulgaricus (Thermobacterium), Yoghurt bacteria (Bulgarian soured milk), from culture
- 11 - Mycobacterium leprae, causing leprosy, smear or tissue section \*
- 12 - Mycobacterium tuberculosis, smear from positive sputum stained after Ziehl-Neelsen

**Rod-shaped bacteria, non spore-forming, gram-negative**

- 13 - Acetobacter acetii, manufacture of vinegar, smear
- 14 - Azotobacter, rods from soil, smear
- 15 - Bacterium erysipelatos (Erysipelothrix rhusiopathiae), smear
- 16 - Bacterium prodigiosum (Serratia marcescens), formation of red pigment, smear
- 17 - Brucella abortus, causing abortation in cattle (Bang disease), smear
- 18 - Eberthella typhi, causing typhoid fever, smear
- 19 - Escherichia coli, colon bacteria, smear
- 20 - Hemophilus influenzae (Pfeiffer), smear
- 21 - Klebsiella pneumoniae (Friedlander), causing pneumonia smear
- 22 - Pasteurella pestis, bubonic plague, smear
- 23 - Proteus vulgaris, putrefaction, smear from culture
- 24 - Rhizobium radicum, smear from culture
- 25 - Rhizobium radicum, nitrogen fixing organisms, section through root nodule of lupin showing bacteria in situ
- 26 - Salmonella enteritidis, causes meat poisoning, smear
- 27 - Salmonella paratyphi, paratyphoid fever, smear
- 28 - Shigella dysenteriae, causes bacillary dysentery, smear

**Rod-shaped bacteria, spore-forming (bacilli)**

- 29 - Bacillus anthracis, smear from culture
- 30 - Bacillus mycoides, large soil organisms growing in chains
- 31 - Bacillus subtilis, hay bacillus, smear showing bacilli and spores doubly stained
- 32 - Clostridium botulinum, causing food poisoning, smear
- 33 - Clostridium perfringens, causing gas gangrene, smear
- 34 - Clostridium tetani, causing lockjaw, smear

**Spiral bacteria and spirochaetes**

- 35 - Vibrio comma, causing Asiatic cholera, smear
- 36 - Spirillum volutans, a very large spirillum, smear \*
- 37 - Rhodospirillum rubrum, chromogenic rods, smear
- 38 - Borrelia duttoni (Spirochaeta recurrentis), causes Central African relapsing fever, blood smear with organisms

**Miscellaneous groups**

- 39 - Actinomyces alni, sec. of root nodule showing mycorrhiza of alder
- 40 - Sphaerotilus natans, from putrid water, long chains with sheaths
- 41 - Methanobacterium, forming methane, smear
- 42 - Streptomyces griseus, streptomycin antibiotic, smear
- 43 - Bacteria from mouth, Gram positive and negative bacteria can be observed in this slide, ideal for demonstration
- 44 - Bacteria from sauerkraut, smear
- 45 - Bacteria from cheese, smear or section
- 46 - Bacteria from human intestine, smear

**Cytological slides, special staining techniques**

- 47 - Typical mixed bacteria, including Gram-positive and Gram-negative rods, smear
- 48 - Monotrichous flagella on Vibrio or Pseudomonas, specially stained \*
- 49 - Peritrichous flagella on Salmonella or Proteus, specially stained
- 50 - Nuclear stain (Bacillus cereus), smear specially stained for nuclear material (DNA)