

2011/12



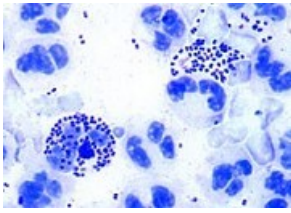
MEDICAL & SCIENCE MEDIA

**Bacteriology & Parasitology
MICROSCOPE SLIDES**

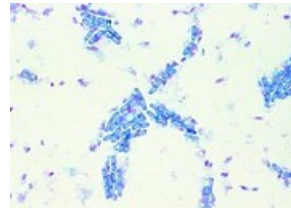
P.O Box 136,
MT DRUITT N.S.W 2770 Australia
Tele: (02) 9675 7750
Fax: (02) 9675 7702

<http://www.msmedia.com.au/bacteriology-parasitology.php>

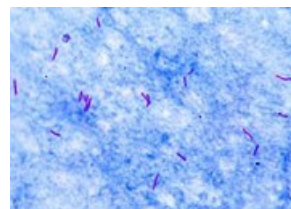


[Cat #: JL-1BPM](#)**Pathogenic Bacteria Slides****25 slides**

- 1 - *Diplococcus pneumoniae*, causing croupous pneumonia, smear
- 2 - *Neisseria gonorrhoeae*, causing gonorrhoea, smear *
- 3 - *Neisseria meningitidis* (*intracellularis*), causing epidemic meningitidis, smear from culture
- 4 - *Staphylococcus aureus*, pus organism, smear from culture
- 5 - *Streptococcus pyogenes*, smear from culture showing short chains
- 6 - *Corynebacterium diphtheriae*, smear from culture
- 7 - *Mycobacterium tuberculosis*, smear from positive sputum stained after Ziehl-Neelsen
- 8 - *Bacterium erysipelas* (*Erysipelothrix rhusiopathiae*), smear
- 9 - *Brucella abortus*, causing abortion in cattle (Bang disease), smear
- 10 - *Proteus vulgaris*, inflammation of urinary system, smear from culture
- 11 - *Escherichia coli*, colon bacteria, possibly pathogen, smear
- 12 - *Eberthella typhi*, causing typhoid fever, smear
- 13 - *Salmonella paratyphi*, paratyphoid fever, smear
- 14 - *Hemophilus influenzae* (Pfeiffer), smear
- 15 - *Klebsiella pneumoniae* (Friedlander), causing pneumonia smear
- 16 - *Pasteurella* (*Yersinia*) *pestis*, bubonic plague, smear
- 17 - *Salmonella enteritidis*, causes meat poisoning, smear
- 18 - *Shigella dysenteriae*, causes bacillary dysentery, smear
- 19 - *Bacillus anthracis*, causes wool sorter's disease, smear
- 20 - *Clostridium botulinum*, causing food poisoning, smear
- 21 - *Clostridium septicum*, smear from culture
- 22 - *Clostridium tetani*, causing lockjaw, smear
- 23 - *Clostridium perfringens*, causing gas gangrene, smear
- 24 - *Vibrio comma*, causing Asiatic cholera, smear
- 25 - *Borrelia duttoni* (*Spirochaeta recurrentis*), causes Central African relapsing fever, blood smear with organisms

[Cat #: JL-2BPM](#)**Bacteria Basic Slide Set****25 slides**

- 1 - *Staphylococcus aureus*, pus organism
- 2 - *Sarcina lutea*, chromogenic rods
- 3 - *Streptococcus pyogenes*, pus organism
- 5 - *Bacillus subtilis*, hay bacillus, smear with bacilli and spores
- 4 - *Streptococcus lactis*, milk souring organism, short chains
- 6 - *Bacillus mycoides*, soil organism
- 7 - *Bacillus anthracis*, wool sorters disease
- 8 - *Mycobacterium tuberculosis*, causing tuberculosis
- 9 - *Corynebacterium diphtheriae*, causing diphtheria
- 10 - *Bacterium erysipelas*, causing red murrain
- 11 - *Rhizobium radicola*, nitrogen fixing bacteria in root nodules
- 12 - *Proteus vulgaris*, putrefaction
- 13 - *Escherichia coli*, colon bacteria
- 14 - *Eberthella typhi*, causing typhoid fever
- 15 - *Salmonella paratyphi*, causing paratyphoid fever
- 16 - *Vibrio comma*, Asiatic cholera
- 17 - *Shigella dysenteriae*, bacillary dysentery
- 18 - *Hemophilus influenzae*, Pfeiffer bacillus
- 19 - *Spirillum volutans*, from putrid water
- 20 - *Rhodospirillum rubrum*, chromogenic spirilli
- 21 - *Clostridium botulinum* (botulism), causing food poisoning, smear
- 22 - *Spirochaeta duttoni* (*Borrelia recurrentis*), in blood smear
- 23 - Bacteria from mouth, smear with Gram positive and negative rods
- 24 - Bacteria from bread
- 25 - Bacteria from cheese

[Cat #: JL-3BPM](#)**Bacteria Large Slide Set****50 slides****Spherical bacteria, cocci**

- 1 - *Diplococcus pneumoniae*, causing croupous pneumonia, smear
- 2 - *Gaffkya tetragena*, occurring as tetrads, smear
- 3 - *Neisseria gonorrhoeae*, causing gonorrhoea, smear *
- 4 - *Neisseria meningitidis* (*intracellularis*), causing epidemic meningitidis, smear from culture

- 5 - *Sarcina lutea*, chromogenic rods occurring in packets
- 6 - *Staphylococcus aureus*, pus organism, smear from culture
- 7 - *Streptococcus pyogenes*, smear from culture showing short chains
- 8 - *Streptococcus lactis*, milk souring organism, smear from culture showing short chains

Rod-shaped bacteria, non spore-forming, gram-positive

- 9 - *Corynebacterium diphtheriae*, smear from culture
- 10 - *Lactobacillus bulgaricus* (Thermobacterium), Yoghurt bacteria (Bulgarian soured milk), from culture
- 11 - *Mycobacterium leprae*, causing leprosy, smear or tissue section *
- 12 - *Mycobacterium tuberculosis*, smear from positive sputum stained after Ziehl-Neelsen

Rod-shaped bacteria, non spore-forming, gram-negative

- 13 - *Acetobacter aceti*, manufacture of vinegar, smear
- 14 - *Azotobacter*, rods from soil, smear
- 15 - *Bacterium erysipelas* (*Erysipelothrix rhusiopathiae*), smear
- 16 - *Bacterium prodigiosum* (*Serratia marcescens*), formation of red pigment, smear
- 17 - *Brucella abortus*, causing abortion in cattle (Bang disease), smear
- 18 - *Eberthella typhi*, causing typhoid fever, smear
- 19 - *Escherichia coli*, colon bacteria, smear
- 20 - *Hemophilus influenzae* (Pfeiffer), smear
- 21 - *Klebsiella pneumoniae* (Friedlander), causing pneumonia smear
- 22 - *Pasteurella pestis*, bubonic plague, smear
- 23 - *Proteus vulgaris*, putrefaction, smear from culture
- 24 - *Rhizobium radicicola*, smear from culture
- 25 - *Rhizobium radicicola*, nitrogen fixing organisms, section through root nodule of lupin showing bacteria in situ
- 26 - *Salmonella enteritidis*, causes meat poisoning, smear
- 27 - *Salmonella paratyphi*, paratyphoid fever, smear
- 28 - *Shigella dysenteriae*, causes bacillary dysentery, smear

Rod-shaped bacteria, spore-forming (bacilli)

- 29 - *Bacillus anthracis*, smear from culture
- 30 - *Bacillus mycoides*, large soil organisms growing in chains
- 31 - *Bacillus subtilis*, hay bacillus, smear showing bacilli and spores doubly stained
- 32 - *Clostridium botulinum*, causing food poisoning, smear
- 33 - *Clostridium perfringens*, causing gas gangrene, smear
- 34 - *Clostridium tetani*, causing lockjaw, smear

Spiral bacteria and spirochaetes

- 35 - *Vibrio comma*, causing Asiatic cholera, smear
- 36 - *Spirillum volutans*, a very large spirillum, smear *
- 37 - *Rhodospirillum rubrum*, chromogenic rods, smear
- 38 - *Borrelia duttoni* (*Spirochaeta recurrentis*), causes Central African relapsing fever, blood smear with organisms

Miscellaneous groups

- 39 - *Actinomyces alni*, sec. of root nodule showing mycorrhiza of alder
- 40 - *Sphaerotilus natans*, from putrid water, long

- chains with sheaths
- 41 - *Methanobacterium*, forming methane, smear
- 42 - *Streptomyces griseus*, streptomycin antibiotic, smear
- 43 - Bacteria from mouth, Gram positive and negative bacteria can be observed in this slide, ideal for demonstration
- 44 - Bacteria from sauerkraut, smear
- 45 - Bacteria from cheese, smear or section
- 46 - Bacteria from human intestine, smear

Cytological slides, special staining techniques

- 47 - Typical mixed bacteria, including Gram-positive and Gram-negative rods, smear
- 48 - Monotrichous flagella on *Vibrio* or *Pseudomonas*, specially stained *
- 49 - Peritrichous flagella on *Salmonella* or *Proteus*, specially stained
- 50 - Nuclear stain (*Bacillus cereus*), smear specially stained for nuclear material (DNA)

Cat #: [JL-4BPM](#)

General Parasitology Large Slide Set



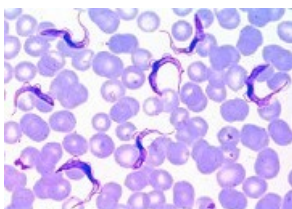
50 slides

- 1 - *Entamoeba histolytica*, amebic dysentery, smear or section
- 2 - *Leishmania donovani*, causes Kala-Azar, smear or section
- 3 - *Trypanosoma gambiense*, Central African sleeping disease, blood smear
- 4 - *Trypanosoma cruzi*, Chagas disease, blood smear
- 5 - *Plasmodium falciparum*, human malaria, blood smear with typical ring stages
- 6 - *Plasmodium berghei*, malaria in rodents, blood smear with vegetative forms and schizogony stages
- 7 - *Plasmodium sp.*, malaria melanemia in human spleen, sec. showing pigment granules in endothelium
- 8 - *Toxoplasma gondii*, causing toxoplasmosis, smear or section of cyst
- 9 - *Babesia canis*, blood smear shows very heavy infection
- 10 - *Sarcocystis sp.*, section of muscle showing the parasites in Miescher's tubes
- 11 - *Nosema apis*, honey bee dysentery, t.s. of diseased bee intestine
- 12 - *Monocystis agilis*, from earthworm seminal vesicle
- 13 - *Eimeria stiedae*, causes coccidiosis in rabbit liver, t.s. shows parasites in all stages
- 14 - *Fasciola hepatica*, beef liver fluke, w.m. of adult flat mount and carefully stained
- 15 - *Fasciola hepatica*, typical t.s. of body in different regions
- 16 - *Fasciola hepatica*, ova w.m.
- 17 - *Fasciola hepatica*, miracidia w.m. *
- 18 - *Schistosoma mansoni*, bilharziosis, adult male or female w.m.
- 19 - *Schistosoma mansoni*, section of infected snail liver showing redia and cercaria *

- 20 - *Schistosoma mansoni*, ova in faeces
- 21 - *Taenia* or *Moniezia*, tapeworm, scolex w.m.
- 22 - *Taenia pisiformis*, dwarf tapeworm, mature proglottids w.m.
- 23 - *Taenia saginata*, tapeworm, proglottids in different stages t.s.
- 24 - *Taenia saginata*, tapeworm, ova in faeces w.m.
- 25 - *Hymenolepis nana*, proglottids w.m.
- 26 - *Echinococcus granulosus*, dog tapeworm, scolices from cyst w.m. showing hooklets
- 27 - *Echinococcus granulosus*, cyst wall and scolices sec.
- 28 - *Ascaris lumbricoides*, roundworm of human, adult female t.s. in region of gonads
- 29 - *Ascaris lumbricoides*, adult male t.s. in region of gonads
- 30 - *Ascaris lumbricoides*, ova from faeces w.m.
- 31 - *Enterobius vermicularis* (*Oxyuris*), pin worm, adult specimen w.m.
- 32 - *Trichinella spiralis*, muscle with encysted larvae l.s.
- 33 - *Ancylostoma*, hookworm, adult male or female w.m.
- 34 - *Trichuris trichiura*, whip worm, ova from faeces w.m.
- 35 - *Strongyloides stercoralis*, larvae w.m.
- 36 - *Heterakis spumosa*, intestinal parasite of rat, adult male or female
- 37 - *Ixodes* sp., tick, adult w.m. Carrier of relapsing fever and borreliosis
- 38 - *Dermanyssus gallinae*, chicken mite w.m.
- 39 - *Acarapis woodi*, varroa, parasitic mite of honey bee, w.m.
- 40 - *Sarcoptes scabiei* (*Acarus siro*), section of diseased skin with parasites
- 41 - *Stomoxys calcitrans*, stable fly, piercing sucking mouth parts w.m.
- 42 - *Anopheles*, malaria mosquito, head and mouth parts of female w.m.
- 43 - *Culex pipiens*, common mosquito, head and mouth parts of female w.m.
- 44 - *Anopheles*, malaria mosquito, larva w.m.
- 45 - *Culex pipiens*, common mosquito, larva w.m.
- 46 - *Culex pipiens*, common mosquito, pupa w.m.
- 47 - *Cimex lectularius*, bed bug, w.m.
- 48 - *Pediculus humanus*, human louse, w.m.
- 49 - *Pediculus humanus*, louse eggs attached to the hair, w.m.
- 50 - *Ctenocephalus canis*, dog flea, adult w.m.

Cat #: [JL-5BPM](#)

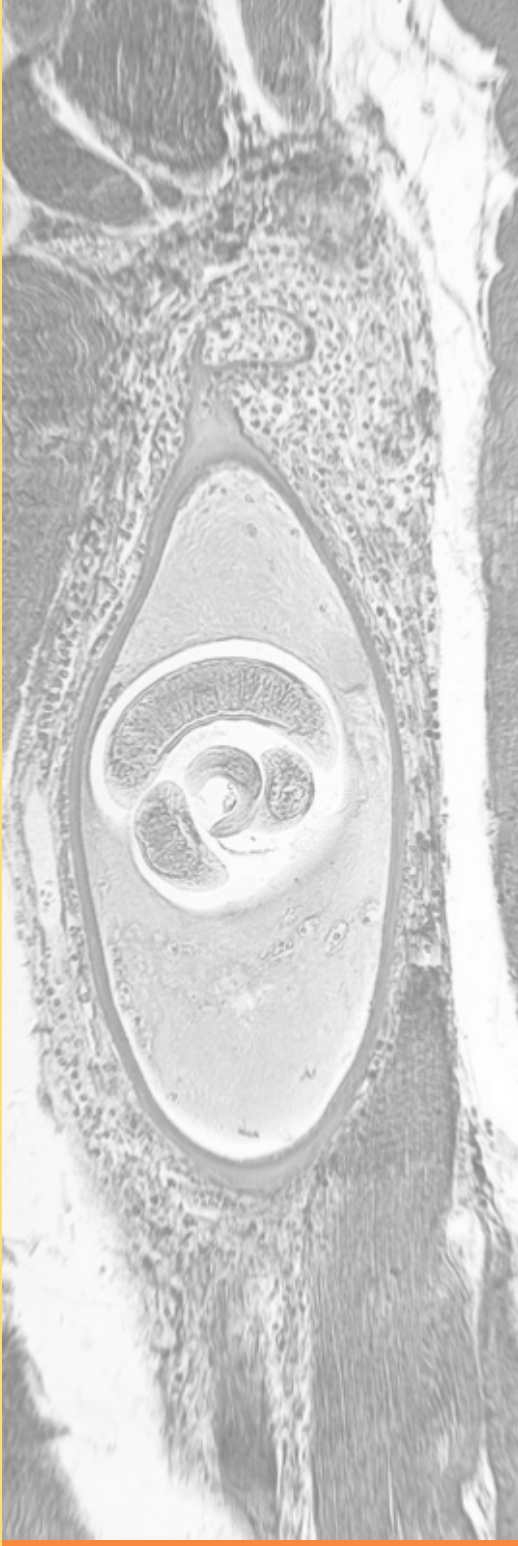
General Parasitology Short Slide Set



25 slides

- 1 - *Trypanosoma gambiense*, Central African sleeping disease, blood smear
- 2 - *Plasmodium berghei*, malaria in rodents, blood smear with vegetative forms and schizogony stages
- 3 - *Sarcocystis* sp., section of muscle showing the

- parasites in Miescher's tubes
- 4 - *Nosema apis*, honey bee dysentery, t.s. of diseased bee intestine
- 5 - *Eimeria stiedae*, causes coccidiosis in rabbit liver, t.s. shows parasites in all stages
- 6 - *Fasciola hepatica*, beef liver fluke, w.m. of adult flat mount and carefully stained
- 7 - *Fasciola hepatica*, ova w.m.
- 8 - *Taenia* or *Moniezia*, tapeworm, scolex w.m.
- 9 - *Taenia pisiformis*, dog tapeworm, mature proglottids w.m.
- 10 - *Taenia saginata*, tapeworm, proglottids in different stages t.s.
- 11 - *Hymenolepis nana*, dwarf tapeworm, proglottids w.m.
- 12 - *Echinococcus granulosus*, cyst wall and scolices sec.
- 13 - *Ascaris lumbricoides*, roundworm of human, adult female t.s. in region of gonads
- 14 - *Ascaris lumbricoides*, ova from faeces w.m.
- 15 - *Enterobius vermicularis* (*Oxyuris*), pin worm, adult specimen w.m.
- 16 - *Trichinella spiralis*, muscle with encysted larvae l.s.
- 17 - *Ixodes* sp., tick, adult w.m. Carrier of relapsing fever and borreliosis
- 18 - *Dermanyssus gallinae*, chicken mite w.m.
- 19 - *Acarapis woodi*, varroa, parasitic mite of honey bee, w.m.
- 20 - *Sarcoptes scabiei* (*Acarus siro*), section of diseased skin with parasites
- 21 - *Anopheles*, malaria mosquito, head and mouth parts of female w.m.
- 22 - *Culex pipiens*, common mosquito, head and mouth parts of female w.m.
- 23 - *Cimex lectularius*, bed bug, w.m.
- 24 - *Pediculus humanus*, human louse, w.m.
- 25 - *Ctenocephalus canis*, dog flea, adult w.m.



P.O Box 136,

MT DRUITT N.S.W 2770

Australia

Tele: (02) 9675 7750

Fax: (02) 9675 7702

<http://www.msmedia.com.au>