

# MEDICAL SLIDE SETS 2017 CATALOGUE



**MEDICAL & SCIENCE MEDIA**

Telephone: (02) 9675-7750 [www.msmedia.com.au](http://www.msmedia.com.au)

**Welcome to our Medical Microscope Slide Sets PDF catalogue.** Thank you for downloading the catalogue, we hope you find it useful. The prices in this catalogue do not include GST. Prices are in Australian dollars.

A Price List is included in this catalogue, but as you know they can change without notice, so we recommend you go to our web site at [www.msmedia.com.au](http://www.msmedia.com.au) regularly to download the latest version.

# CONTENTS

Bacteriology Slide Sets.....	03 - 06
Parasitology Slide Set.....	07 - 10
Human Histology Slide Set.....	11 - 16
Human Pathology Slide Set.....	17 - 30
<b>PRICE LIST.....</b>	<b>31 - 32</b>

## MEDICAL & SCIENCE MEDIA

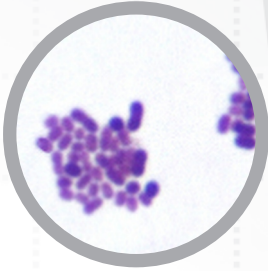
P.O Box 136, Mount Drutt N.S.W 2770 Australia  
Telephone: (02) 9675-7750 Facsimile: (02) 9675-7702



All images in this catalogue are copyright, and cannot be used without permission.

# BACTERIOLOGY SLIDE SETS

## Cat #: CH-BACT1 - COCCUS SLIDE SET - 14 slides



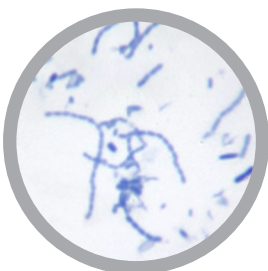
- 1 - Streptococcus faecalis smear
- 2 - Streptococcus pyogenes smear
- 3 - Streptococcus sanguinis smear
- 4 - Streptococcus lactis smear
- 5 - Micrococcus tetragenus smear
- 6 - Sarcina smear
- 7 - Staphylococcus epidermis smear
- 8 - Staphylococcus aureus encephalitis
- 9 - Staphylococcus aureus smear
- 10 - Neisseria gonorrhoeae smear (pure culture)
- 11 - Neisseria gonorrhoeae smear (pathological specimen)
- 12 - Neisseria meningitidis smear (meningococcus)
- 13 - Candida albicans smear
- 14 - Azotobacter chroococcum smear (capsule)

## Cat #: CH-BACT2 - BACILLUS SLIDE SET - 29 slides

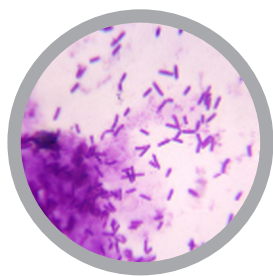


- 1 - Escherichia coli smear
- 2 - Cryptococcus neoformans
- 3 - Salmonella typhi smear (showing flagella)(silver staining)
- 4 - Aerobacter aerogenes smear
- 5 - Acetobacter aceti smear
- 6 - Shigella sonnei smear
- 7 - Bacillus erysipelas smear
- 8 - Bacillus Thuringiensis smear
- 9 - Bacillus cereus smear
- 10 - Bacillus subtilis smear (showing spore)
- 11 - Bacillus anthracis smear
- 12 - Brucella abortus smear
- 13 - Pasteurella maltocida smear
- 14 - Listeria monocytogenes smear
- 15 - Mycobacterium tuberculosis smear
- 16 - Corynebacterium diphtheriae smear
- 17 - Clostridium perfringens smear
- 18 - Clostridium botulinum smear
- 19 - Clostridium tetani smear
- 20 - Pseudomonas aeruginosa smear
- 21 - Bordetella pertussis smear
- 22 - Agrobacterium tumefaciens smear
- 23 - Proteus vulgaris smear
- 24 - Nitrobacter smear
- 25 - Vibrio cholerae
- 26 - Yersinia pestis
- 27 - Bifidobacterium
- 28 - Propionibacterium
- 29 - Campylobacter jejuni

## Cat #: CH-BACT6 - BACTERIA PATHOGENS SLIDE SET - 29 slides



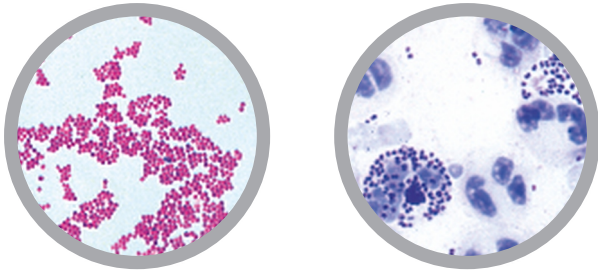
- 1 - Streptococcus faecalis smear
- 2 - Neisseria gonorrhoeae smear (pure culture)
- 3 - Candida albicans smear
- 4 - Streptococcus pyogenes smear
- 5 - Staphylococcus aureus smear
- 6 - Streptococcus sanguinis smear
- 7 - Escherichia coli smear
- 8 - Cryptococcus neoformans
- 9 - Salmonella typhi smear (showing flagella)(silver staining)
- 10 - Aerobacter aerogenes smear
- 11 - Bacillus anthracis smear
- 12 - Clostridium perfringens smear
- 13 - Shigella sonnei smear
- 14 - Salmonella typhi smear
- 15 - Brucella abortus smear
- 16 - Pasteurella maltocida smear
- 17 - Listeria monocytogenes smear
- 18 - Mycobacterium tuberculosis smear
- 19 - Corynebacterium diphtheriae smear
- 20 - Clostridium botulinum smear
- 21 - Clostridium tetani smear
- 22 - Pseudomonas aeruginosa smear
- 23 - Bordetella pertussis smear
- 24 - Bacillus cereus smear
- 25 - Proteus vulgaris smear
- 26 - Vibrio cholerae
- 27 - Yersinia pestis
- 28 - Campylobacter jejune
- 29 - Neisseria meningitidis smear (meningococcus)



- 1 - Streptococcus faecalis smear
- 2 - Streptococcus sanguinis smear
- 3 - Streptococcus lactis smear
- 4 - Streptococcus pyogenes smear
- 5 - Micrococcus tetragenus smear
- 6 - Staphylococcus epidermis smear
- 7 - Staphylococcus aureus encephalitis
- 8 - Staphylococcus aureus smear
- 9 - Sarcina smear
- 10 - Candida albicans smear
- 11 - Bacillus subtilis smear (showing spore)
- 12 - Bacillus anthracis smear
- 13 - Clostridium perfringens smear
- 14 - Bacillus erysipelas smear
- 15 - Bacillus Thuringiensis smear
- 16 - Listeria monocytogenes smear
- 17 - Corynebacterium diphtheriae smear
- 18 - Clostridium botulinum smear
- 19 - Clostridium tetani smear
- 20 - Bacillus cereus smear
- 21 - Bifidobacterium
- 22 - Propionibacterium
- 23 - Neisseria gonorrhoeae smear (pure culture)
- 24 - Neisseria gonorrhoeae smear (pathological specimen)
- 25 - Azotobacter chroococcum smear (capsule)
- 26 - Escherichia coli smear
- 27 - Salmonella typhi smear (showing flagella)(silver staining)
- 28 - Aerobacter aerogenes smear
- 29 - Shigella sonnei smear
- 30 - Salmonella typhi smear
- 31 - Brucella abortus smear
- 32 - Pasteurella maltocida smear
- 33 - Pseudomonas aeruginosa smear
- 34 - Bordetella pertussis smear
- 35 - Agrobacterium tumefaciens smear
- 36 - Proteus vulgaris smear
- 37 - Acetobacter aceti smear
- 38 - Nitrobacter smear
- 39 - Vibrio cholerae
- 40 - Yersinia pestis
- 41 - Campylobacter jejuni
- 42 - Leptospira w.m.
- 43 - Neisseria meningitidis smear (meningococcus)

For slide set prices see [page 31](#). If you are interested in purchasing individual slides [CLICK HERE](#)

Cat #: JL-1BPM - PATHOGENIC BACTERIA SLIDE SET - 25 slides

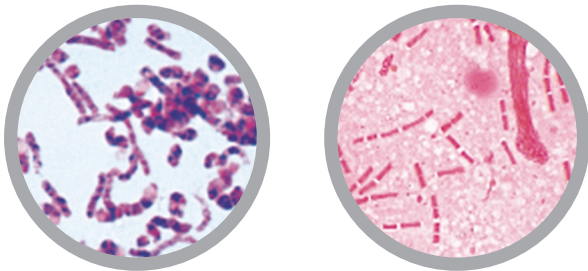


- 1 - *Diplococcus pneumoniae*, causing croupous pneumonia, smear
- 2 - *Neisseria gonorrhoeae*, causing gonorrhoea, smear \*
- 3 - *Neisseria meningitidis* (intracellularis), causing epidemic meningitidis, smear from culture
- 4 - *Staphylococcus aureus*, pus organism, smear from culture
- 5 - *Streptococcus pyogenes*, smear from culture showing short chains
- 6 - *Corynebacterium diphtheriae*, smear from culture
- 7 - *Mycobacterium tuberculosis*, smear from positive sputum stained after Ziehl-Neelsen
- 8 - *Bacterium erysipelas* (*Erysipelothrix rhusiopathiae*), smear
- 9 - *Brucella abortus*, causing abortion in cattle (Bang disease), smear
- 10 - *Proteus vulgaris*, inflammation of urinary system, smear from culture
- 11 - *Escherichia coli*, colon bacteria, possibly pathogen, smear
- 12 - *Eberthella typhi*, causing typhoid fever, smear

- 13 - *Salmonella paratyphi*, paratyphoid fever, smear
- 14 - *Hemophilus influenzae* (Pfeiffer), smear
- 15 - *Klebsiella pneumoniae* (Friedlander), causing pneumonia smear
- 16 - *Pasteurella* (*Yersinia*) *pestis*, bubonic plague, smear
- 17 - *Salmonella enteritidis*, causes meat poisoning, smear
- 18 - *Shigella dysenteriae*, causes bacillary dysentery, smear
- 19 - *Bacillus anthracis*, causes wool sorter's disease, smear
- 20 - *Clostridium botulinum*, causing food poisoning, smear
- 21 - *Clostridium septicum*, smear from culture
- 22 - *Clostridium tetani*, causing lockjaw, smear
- 23 - *Clostridium perfringens*, causing gas gangrene, smear
- 24 - *Vibrio comma*, causing Asiatic cholera, smear
- 25 - *Borrelia duttoni* (*Spirochaeta recurrentis*), causes Central African relapsing fever, blood smear with organisms

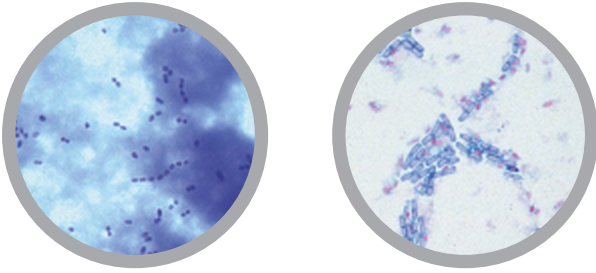
For slide set prices see [page 31](#). If you are interested in purchasing individual slides [CLICK HERE](#)

Cat #: JL-2BPM - BACTERIA BASIC SLIDE SET - 25 slides



- 1 - *Staphylococcus aureus*, pus organism
- 2 - *Sarcina lutea*, chromogenic rods
- 3 - *Streptococcus pyogenes*, pus organism
- 5 - *Bacillus subtilis*, hay bacillus, smear with bacilli and spores
- 4 - *Streptococcus lactis*, milk souring organism, short chains
- 6 - *Bacillus mycoides*, soil organism
- 7 - *Bacillus anthracis*, wool sorters disease
- 8 - *Mycobacterium tuberculosis*, causing tuberculosis
- 9 - *Corynebacterium diphtheriae*, causing diphtheria
- 10 - *Bacterium erysipelas*, causing red murrain
- 11 - *Rhizobium radicicola*, nitrogen fixing bacteria in root nodules
- 12 - *Proteus vulgaris*, putrefaction
- 13 - *Escherichia coli*, colon bacteria

- 14 - *Eberthella typhi*, causing typhoid fever
- 15 - *Salmonella paratyphi*, causing paratyphoid fever
- 16 - *Vibrio comma*, Asiatic cholera
- 17 - *Shigella dysenteriae*, bacillary dysentery
- 18 - *Hemophilus influenzae*, Pfeiffer bacillus
- 19 - *Spirillum volutans*, from putrid water
- 20 - *Rhodospirillum rubrum*, chromogenic spirilli
- 21 - *Clostridium botulinum* (botulism), causing food poisoning, smear
- 22 - *Spirochaeta duttoni* (*Borrelia recurrentis*), in blood smear
- 23 - Bacteria from mouth, smear with Gram positive and negative rods
- 24 - Bacteria from bread
- 25 - Bacteria from cheese



**Spherical bacteria, cocci**

- 1 - Diplococcus pneumoniae, causing croupous pneumonia, smear
- 2 - Gaffkya tetragena, occurring as tetrads, smear
- 3 - Neisseria gonorrhoeae, causing gonorrhoea, smear \*
- 4 - Neisseria meningitidis (intracellularis), causing epidemic meningitidis, smear from culture
- 5 - Sarcina lutea, chromogenic rods occurring in packets
- 6 - Staphylococcus aureus, pus organism, smear from culture
- 7 - Streptococcus pyogenes, smear from culture showing short chains
- 8 - Streptococcus lactis, milk souring organism, smear from culture showing short chains

**Rod-shaped bacteria, non spore-forming, gram-positive**

- 9 - Corynebacterium diphtheriae, smear from culture
- 10 - Lactobacillus bulgaricus (Thermobacterium), Yoghurt bacteria (Bulgarian soured milk), from culture
- 11 - Mycobacterium leprae, causing leprosy, smear or tissue section \*
- 12 - Mycobacterium tuberculosis, smear from positive sputum stained after Ziehl-Neelsen

**Rod-shaped bacteria, non spore-forming, gram-negative**

- 13 - Acetobacter acetii, manufacture of vinegar, smear
- 14 - Azotobacter, rods from soil, smear
- 15 - Bacterium erysipelatos (Erysipelothrix rhusiopathiae), smear
- 16 - Bacterium prodigiosum (Serratia marcescens), formation of red pigment, smear
- 17 - Brucella abortus, causing abortation in cattle (Bang disease), smear
- 18 - Eberthella typhi, causing typhoid fever, smear
- 19 - Escherichia coli, colon bacteria, smear
- 20 - Hemophilus influenzae (Pfeiffer), smear
- 21 - Klebsiella pneumoniae (Friedlander), causing pneumonia smear
- 22 - Pasteurella pestis, bubonic plague, smear
- 23 - Proteus vulgaris, putrefaction, smear from culture
- 24 - Rhizobium radicum, smear from culture
- 25 - Rhizobium radicum, nitrogen fixing organisms, section through root nodule of lupin showing bacteria in situ
- 26 - Salmonella enteritidis, causes meat poisoning, smear
- 27 - Salmonella paratyphi, paratyphoid fever, smear
- 28 - Shigella dysenteriae, causes bacillary dysentery, smear

**Rod-shaped bacteria, spore-forming (bacilli)**

- 29 - Bacillus anthracis, smear from culture
- 30 - Bacillus mycoides, large soil organisms growing in chains
- 31 - Bacillus subtilis, hay bacillus, smear showing bacilli and spores doubly stained
- 32 - Clostridium botulinum, causing food poisoning, smear
- 33 - Clostridium perfringens, causing gas gangrene, smear
- 34 - Clostridium tetani, causing lockjaw, smear

**Spiral bacteria and spirochaetes**

- 35 - Vibrio comma, causing Asiatic cholera, smear
- 36 - Spirillum volutans, a very large spirillum, smear \*
- 37 - Rhodospirillum rubrum, chromogenic rods, smear
- 38 - Borrelia duttoni (Spirochaeta recurrentis), causes Central African relapsing fever, blood smear with organisms

**Miscellaneous groups**

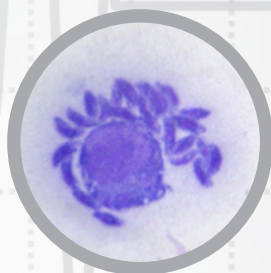
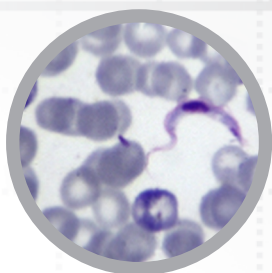
- 39 - Actinomyces alni, sec. of root nodule showing mycorrhiza of alder
- 40 - Sphaerotilus natans, from putrid water, long chains with sheaths
- 41 - Methanobacterium, forming methane, smear
- 42 - Streptomyces griseus, streptomycin antibiotic, smear
- 43 - Bacteria from mouth, Gram positive and negative bacteria can be observed in this slide, ideal for demonstration
- 44 - Bacteria from sauerkraut, smear
- 45 - Bacteria from cheese, smear or section
- 46 - Bacteria from human intestine, smear

**Cytological slides, special staining techniques**

- 47 - Typical mixed bacteria, including Gram-positive and Gram-negative rods, smear
- 48 - Monotrichous flagella on Vibrio or Pseudomonas, specially stained \*
- 49 - Peritrichous flagella on Salmonella or Proteus, specially stained
- 50 - Nuclear stain (Bacillus cereus), smear specially stained for nuclear material (DNA)

# PARASITOLOGY SLIDE SETS

Cat #: CH-PAR1 - PROTOZOA SLIDE SET - 29 slides

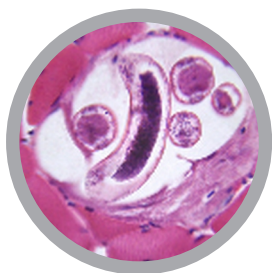


- 1 - Euglena w.m.
- 2 - Amoeba w.m.
- 3 - Paramecium caudatum w.m.
- 4 - Conjugation of Paramecium caudatum w.m.
- 5 - Binary fission of Paramecium caudatum w.m.
- 6 - Vorticella w.m.
- 7 - Stylonychia w.m.
- 8 - Entamoeba histolytica cyst w.m.
- 9 - Entamoeba coli Grassi trichrome smear
- 10 - Entamoeba coli cysts sec.
- 11 - Entamoeba histolytica trophozoites

- 12 - Iodamoeba butschlii von Prowazek smear
- 13 - Leishmania donovani amastigotes
- 14 - Leishmania donovani promastigotes
- 15 - Blood trypanosome smear
- 16 - Giardia lamblia trophozoites w.m.
- 17 - Giardia lamblia cysts w.m.
- 18 - Trichomonas vaginalis trophozoites w.m.
- 19 - Plasmodium vivax w.m.
- 20 - Plasmodium falciparum w.m.
- 21 - Plasmodium malariae
- 22 - Plasmodium berghei
- 23 - Toxoplasma gondii trophozoites w.m.
- 24 - Pneumocystis carinii cysts w.m.
- 25 - Oocyst of Eimeria tenella w.m.
- 26 - Balantidium coli cysts w.m.
- 27 - Balantidium coli trophozoites w.m.
- 28 - Babesia Canis blood smear
- 29 - Cryptosporidium

For slide set prices see [page 31](#). If you are interested in purchasing individual slides [CLICK HERE](#)

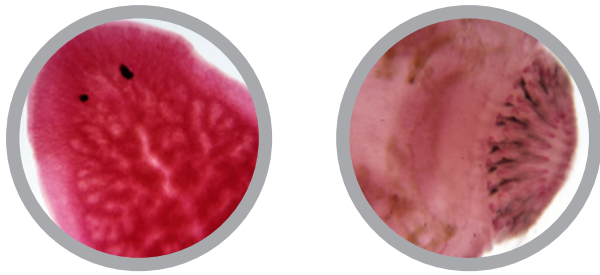
Cat #: CH-PAR3 - ROUNDWORMS SLIDE SET - 25 slides



- 1 - Ascaris lumbricoides (female and male) t.s.
- 2 - Ascaris lumbricoides (show connect sting) t.s.
- 3 - Eggs of Enterobius w.m.(natural color)
- 4 - Rotifera w.m.
- 5 - Zygote of Ascaris lumbricoides w.m. (natural color)
- 6 - Unfertilized eggs of Ascaris lumbricoides w.m. (natural color)
- 7 - Apoprotein zygote of Ascaris lumbricoides w.m. (natural color)
- 8 - Anterior end of Ascaris lumbricoides w.m.
- 9 - Back end of male Ascaris lumbricoides w.m.

- 10 - Parascaris equorum
- 11 - Eggs of Trichuris trichiura w.m.(natural color)
- 12 - Female Trichuris trichiura w.m.
- 13 - Male Trichuris trichiura w.m.
- 14 - Eggs of Ancylostoma w.m. (natural color)
- 15 - Microfilaria of Brugia malayi w.m.
- 16 - Adult of Trichinella spiralis w.m. (female)
- 17 - Trichinella spiralis (male)
- 18 - Larva of Trichinella spiralis w.m.
- 19 - Cyst of larva of Trichinella spiralis t.s. (H&E)
- 20 - Cyst of larva of Trichinella spiralis squash
- 21 - Eggs of Macracanthorhynchus hirudinaceus w.m. (natural color)
- 22 - Mixed eggs of Trematode w.m.
- 23 - Mixed eggs of Nematode w.m.
- 24 - Angiostrongyliasis (male) w.m.
- 25 - Angiostrongyliasis (female) w.m.

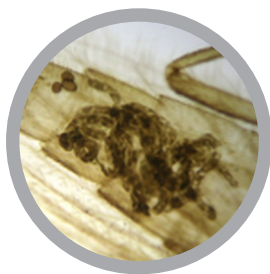
Cat #: CH-PAR2 - FLATWORM SLIDE SET - 49 slides



- 1 - Dugesia japonica (intestine injected) w.m.
- 2 - Dugesia japonica (shows reproduction system) w.m.
- 3 - Dugesia japonica through pharynx t.s.
- 4 - Dugesia japonica w.m.
- 5 - Dugesia japonica sagittal section
- 6 - Dugesia japonica through eyes t.s.
- 7 - Adult of Fasciola hepatica w.m.
- 8 - Fasciola hepatica t.s.
- 9 - Egg of Fasciola hepatica
- 10 - Mature proglottid of Taenia ovis w.m.
- 11 - Adult Clonorchis sinensis w.m.
- 12 - Adult Clonorchis sinensis t.s.
- 13 - Eggs of Clonorchis sinensis w.m. (nature color)
- 14 - Clonorchis sinensis with liver sec.
- 15 - Metacercaria of Clonorchis sinensis w.m.
- 16 - Eggs of Fasciolopsis buski w.m. (natural color)
- 17 - Adult of Fasciolopsis buski w.m.
- 18 - Eggs of Paragonimus westermani w.m. (natural color)
- 19 - Schistosoma japonicum (female) w.m.
- 20 - Schistosoma japonicum (male) w.m.
- 21 - Sexual mosaic of Schistosoma japonicum w.m.
- 22 - Eggs of Schistosoma japonicum w.m. (natural color)
- 23 - Miracidium of Schistosoma japonicum w.m.
- 24 - Sporocyst of Schistosoma japonicum w.m.
- 25 - Cercaria of Schistosoma japonicum w.m.
- 26 - Eggs of Taenia solium w.m. (natural color)
- 27 - Scolex of Taenia solium w.m.
- 28 - Immature proglottid of Taenia solium w.m.
- 29 - Mature proglottid of Taenia solium w.m.
- 30 - Cercaria of Taenia solium w.m.
- 31 - Gravid proglottid of Taenia solium w.m.
- 32 - Mature proglottid of Taenia saginatus w.m.
- 33 - Immature proglottid of Taenia saginatus w.m.
- 34 - Gravid proglottid of Taenia saginatus w.m. (ink injected)
- 35 - Eggs of Taenia saginatus w.m. (natural color)
- 36 - Scolex of Taenia saginatus sec.
- 37 - Echinococcus granulosus adult w.m.
- 38 - Hydatid sand w.m. (protoscolex)
- 39 - Mature proglottid of Dipylidium caninum w.m.
- 40 - Immature proglottid of Dipylidium caninum w.m.
- 41 - Scolex of Dipylidium caninum w.m.
- 42 - Gravid proglottid of Dipylidium caninum w.m.
- 43 - Proglottis of Moniezia expansa t.s.
- 44 - Mansoni Spirometra mature gravid proglottid
- 45 - Egg of Hymenolepis nana
- 46 - Immature section of Hymenolepis nana
- 47 - Mature section of Hymenolepis nana
- 48 - Gravid proglottid of Hymenolepis nana
- 49 - Adult of Hymenolepis nana

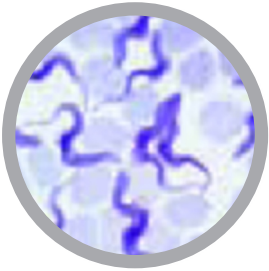
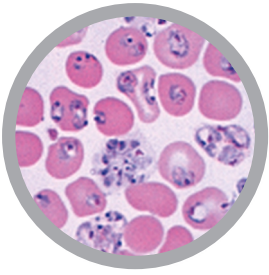
For slide set prices see [page 31](#). If you are interested in purchasing individual slides [CLICK HERE](#)

Cat #: CH-PAR4 - ECTOPARASITE SLIDE SET - 17 slides

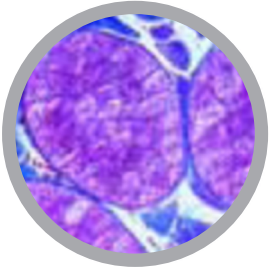


- 1 - Adult of sarcoptidae w.m.
- 2 - Adult of Demodex w.m.
- 3 - Male and female Culex w.m.
- 4 - Male and female Aedes w.m.
- 5 - Maggot w.m.
- 6 - Adult of Ixodes w.m.
- 7 - Adult of Dermatophagoides fariane w.m. (dust mite)
- 8 - Pediculus humanus (female) w.m.
- 9 - Pediculus humanus (male) w.m.
- 10 - Eggs of Pediculus humanus w.m.
- 11 - Adult of female Phlebotomus w.m.
- 12 - Adult of male Phlebotomus w.m.
- 13 - Pulex w.m.
- 14 - Mouthpart of female Culex w.m.
- 15 - Adult pediculus comparison (human, pig and cattle)
- 16 - Bed bug w.m. (female)
- 17 - Bed bug w.m. (male)





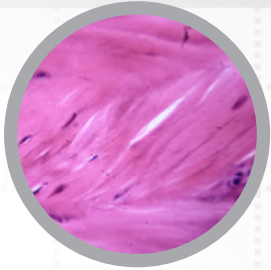
- 1 - *Entamoeba histolytica*, amebic dysentery, smear or section
- 2 - *Leishmania donovani*, causes Kala-Azar, smear or section
- 3 - *Trypanosoma gambiense*, Central African sleeping disease, blood smear
- 4 - *Trypanosoma cruzi*, Chagas disease, blood smear
- 5 - *Plasmodium falciparum*, human malaria, blood smear with typical ring stages
- 6 - *Plasmodium berghei*, malaria in rodents, blood smear with vegetative forms and schizogony stages
- 7 - *Plasmodium* sp., malaria melanemia in human spleen, sec. showing pigment granules in endothelium
- 8 - *Toxoplasma gondii*, causing toxoplasmosis, smear or section of cyst
- 9 - *Babesia canis*, blood smear shows very heavy infection
- 10 - *Sarcocystis* sp., section of muscle showing the parasites in Miescher's tubes
- 11 - *Nosema apis*, honey bee dysentery, t.s. of diseased bee intestine
- 12 - *Monocystis agilis*, from earthworm seminal vesicle
- 13 - *Eimeria stiedae*, causes coccidiosis in rabbit liver, t.s. shows parasites in all stages
- 14 - *Fasciola hepatica*, beef liver fluke, w.m. of adult flat mount and carefully stained
- 15 - *Fasciola hepatica*, typical t.s. of body in different regions
- 16 - *Fasciola hepatica*, ova w.m.
- 17 - *Fasciola hepatica*, miracidia w.m.\*
- 18 - *Schistosoma mansoni*, bilharziosis, adult male or female w.m.
- 19 - *Schistosoma mansoni*, section of infected snail liver showing redia and cercaria \*
- 20 - *Schistosoma mansoni*, ova in faeces
- 21 - *Taenia* or *Moniezia*, tapeworm, scolex w.m.
- 22 - *Taenia pisiformis*, dwarf tapeworm, mature proglottids w.m.
- 23 - *Taenia saginata*, tapeworm, proglottids in different stages t.s.
- 24 - *Taenia saginata*, tapeworm, ova in faeces w.m.
- 25 - *Hymenolepis nana*, proglottids w.m.
- 26 - *Echinococcus granulosus*, dog tapeworm, scolices from cyst w.m. showing hooklets
- 27 - *Echinococcus granulosus*, cyst wall and scolices sec.
- 28 - *Ascaris lumbricoides*, roundworm of human, adult female t.s. in region of gonads
- 29 - *Ascaris lumbricoides*, adult male t.s. in region of gonads
- 30 - *Ascaris lumbricoides*, ova from faeces w.m.
- 31 - *Enterobius vermicularis* (*Oxyuris*), pin worm, adult specimen w.m.
- 32 - *Trichinella spiralis*, muscle with encysted larvae l.s.
- 33 - *Ancylostoma*, hookworm, adult male or female w.m.
- 34 - *Trichuris trichiura*, whip worm, ova from faeces w.m.
- 35 - *Strongyloides stercoralis*, larvae w.m.
- 36 - *Heterakis spumosa*, intestinal parasite of rat, adult male or female
- 37 - *Ixodes* sp., tick, adult w.m. Carrier of relapsing fever and borreliosis
- 38 - *Dermanyssus gallinae*, chicken mite w.m.
- 39 - *Acarapis woodi*, varroa, parasitic mite of honey bee, w.m.
- 40 - *Sarcoptes scabiei* (*Acarus siro*), section of diseased skin with parasites
- 41 - *Stomoxys calcitrans*, stable fly, piercing sucking mouth parts w.m.
- 42 - *Anopheles*, malaria mosquito, head and mouth parts of female w.m.
- 43 - *Culex pipiens*, common mosquito, head and mouth parts of female w.m.
- 44 - *Anopheles*, malaria mosquito, larva w.m.
- 45 - *Culex pipiens*, common mosquito, larva w.m.
- 46 - *Culex pipiens*, common mosquito, pupa w.m.
- 47 - *Cimex lectularius*, bed bug, w.m.
- 48 - *Pediculus humanus*, human louse, w.m.
- 49 - *Pediculus humanus*, louse eggs attached to the hair, w.m.
- 50 - *Ctenocephalus canis*, dog flea, adult w.m.



- 1 - Trypanosoma gambiense, Central African sleeping disease, blood smear
- 2 - Plasmodium berghei, malaria in rodents, blood smear with vegetative forms and schizogony stages
- 3 - Sarcocystis sp., section of muscle showing the parasites in Miescher's tubes
- 4 - Nosema apis, honey bee dysentery, t.s. of diseased bee intestine
- 5 - Eimeria stiedae, causes coccidiosis in rabbit liver, t.s. shows parasites in all stages
- 6 - Fasciola hepatica, beef liver fluke, w.m. of adult flat mount and carefully stained
- 7 - Fasciola hepatica, ova w.m.
- 8 - Taenia or Moniezia, tapeworm, scolex w.m.
- 9 - Taenia pisiformis, dog tapeworm, mature proglottids w.m.
- 10 - Taenia saginata, tapeworm, proglottids in different stages t.s.
- 11 - Hymenolepis nana, dwarf tapeworm, proglottids w.m.
- 12 - Echinococcus granulosus, cyst wall and scolices sec.
- 13 - Ascaris lumbricoides, roundworm of human, adult female t.s. in region of gonads
- 14 - Ascaris lumbricoides, ova from faeces w.m.
- 15 - Enterobius vermicularis (Oxyuris), pin worm, adult specimen w.m.
- 16 - Trichinella spiralis, muscle with encysted larvae l.s.
- 17 - Ixodes sp., tick, adult w.m. Carrier of relapsing fever and borreliosis
- 18 - Dermanyssus gallinae, chicken mite w.m.
- 19 - Acarapis woodi, varroa, parasitic mite of honey bee, w.m.
- 20 - Sarcoptes scabiei (Acarus siro), section of diseased skin with parasites
- 21 - Anopheles, malaria mosquito, head and mouth parts of female w.m.
- 22 - Culex pipiens, common mosquito, head and mouth parts of female w.m.
- 23 - Cimex lectularius, bed bug, w.m.
- 24 - Pediculus humanus, human louse, w.m.
- 25 - Ctenocephalus canis, dog flea, adult w.m.

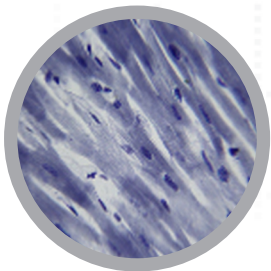
# HUMAN HISTOLOGY SLIDE SETS

## Cat #: CH-HIST1 - EPITHELIAL & CONNECTIVE SLIDE SET - 11 slides



- 1 - Simple columnar epithelium of human sec.
- 2 - Simple cuboidal epithelium of human sec.
- 3 - Pseudostratified ciliated columnar epithelium of human sec.
- 4 - Simple columnar ciliated epithelium of human sec.
- 5 - Stratified squamous epithelium of human sec.
- 6 - Epithelium cells of cavitas oris of human w.s.
- 7 - Loose connective tissue of human sec.
- 8 - Adipose tissue of human sec.
- 9 - Hyaline cartilage of human sec.
- 10 - Fibrous cartilage of human sec.
- 11 - Elastic cartilage of human sec.

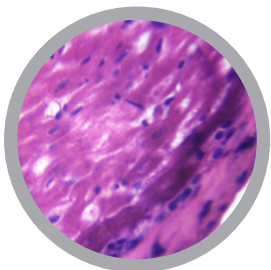
## Cat #: CH-HIST2 - MUSCULAR AND SKELETAL SYSTEM SLIDE SET - 9 slides



- 1 - Smooth muscle isolated of human sec.
- 2 - Skeletal muscle of human t.s. and l.s. (H&E)
- 3 - Skeletal muscle of human l.s. (hematoxylin staining)
- 4 - Skeletal muscle isolated of human w.s.
- 5 - Cardiac muscle of human sec. (H&E)
- 6 - Human bone grinding w.s.
- 7 - Hard bone of human t.s. (thionin-picric acid staining)
- 8 - Hard bone of human l.s. (thionin-picric acid staining)
- 9 - Human toe bone l.s.

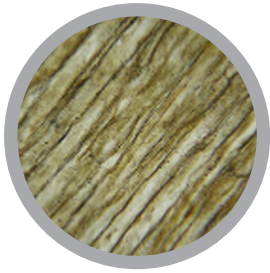
For slide set prices see [page 31](#). If you are interested in purchasing individual slides [CLICK HERE](#)

## Cat #: CH-HIST4 - CARDIOVASCULAR AND RESPIRATORY SYSTEM SLIDE SET - 13 slides



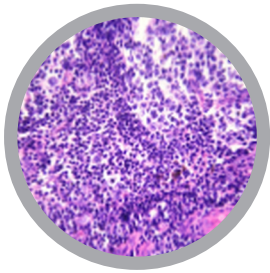
- 1 - Cardiac muscle of human sec.
- 2 - Cardiac valve of human sec.
- 3 - Human medium-sized artery and vein sec.
- 4 - Large artery of human sec.
- 5 - Large vein of human sec.
- 6 - Human Heart sec. (showing Purkinje cell)
- 7 - Blood (TYPE A.B.O) of human smear
- 8 - Blood of human smear (H&E)
- 9 - Blood of human smear (stained with Giemsa)
- 10 - Trachea of human t.s.
- 11 - Trachea of human l.s.
- 12 - Human Lung sec.
- 13 - Epiglottic cartilage of human sagittal section

Cat #: CH-HIST3 - NEUROLOGICAL SYSTEM SLIDE SET - 9 slides



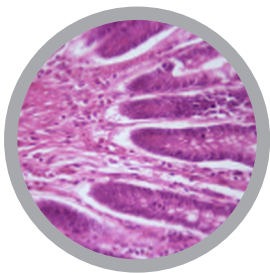
- 1 - Spinal cord of human t.s.
- 2 - Myelinated nerve fiber of human t.s.and l.s. (H&E)
- 3 - Myelinated nerve fiber of human t.s.and l.s. (silver staining)
- 4 - Tactile corpuscle of human sec.
- 5 - Lamellar corpuscle of human sec.
- 6 - Cerebrum of human sec. (silver staining)
- 7 - Cerebrum of human sec. (H&E)
- 8 - Cerebellum of human sec. (H&E)
- 9 - Cerebellum of human sec. (silver staining)

Cat #: CH-HIST5 - IMMUNE SYSTEM SLIDE SET - 10 slides



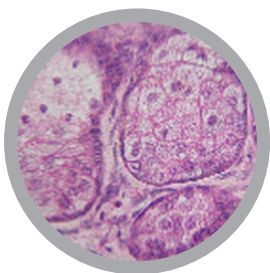
- 1 - Lymphoid node of human sec.
- 2 - Spleen of human sec.
- 3 - Thymus of human sec.
- 4 - Palatine tonsil of human sec.
- 5 - Red bone marrow of human t.s.
- 6 - Vermiform appendix of human sec.
- 7 - T-lymphocyte (E rosette assay)
- 8 - Microphage w.m. (phagocytosis)
- 9 - Macrophage w.m. (phagocytosis)
- 10 - Lymphocyte transformation w.m.

Cat #: CH-HIST6 - DIGESTIVE SYSTEM SLIDE SET - 19 slides



- 1 - Tooth sec.
- 2 - Liver of human sec. (show bile canaliculus of liver)
- 3 - Tongue of human l.s. (show intertal structure)
- 4 - Oesophagus of human t.s.
- 5 - Stomach of human t.s.
- 6 - Gastric section of stomach of human sec.
- 7 - Small intestine of human t.s.
- 8 - Small intestine of human l.s.
- 9 - Jejunum of human sec.
- 10 - Duodenum of human sec.
- 11 - Ileum of human sec.
- 12 - Vermiform appendix of human sec.
- 13 - Large intestine of human l.s.
- 14 - Large intestine of human t.s.
- 15 - Rectum sec.
- 16 - Parotid gland of human sec.
- 17 - Submandibular gland of human sec.
- 18 - Sublingual gland of human sec.
- 19 - Gall bladder of human sec.

Cat #: CH-HIST8 - INTEGUMENTARY SYSTEM SLIDE SET - 8 slides



- 1 - Lip sec.
- 2 - Human eyelid sec.
- 3 - Skin of human (show sweat gland) sec.
- 4 - Skin of human (show hair follicle) sec.
- 5 - Skin of human (show hair follicle) t.s.
- 6 - Skin of human back sec.
- 7 - Abdominal skin of human sec.
- 8 - Skin of human (show stratum corneum) sec.
- 9 - Hair of human w.s.

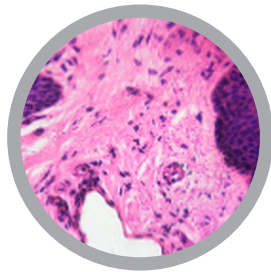
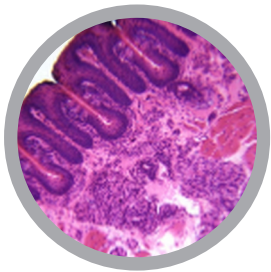
Cat #: CH-HIST7 - URINARY AND REPRODUCTIVE SYSTEM SLIDE SET - 21 slides



- 1 - Urinary bladder of human
- 2 - Kidney of human sec.
- 3 - Ureter of human t.s.
- 4 - Kidney of human through renal cortex t.s.
- 5 - Testis of human sec.
- 6 - Spermatozoon of human smear
- 7 - Epididymis of human sec.
- 8 - Prostate of human sec.
- 9 - Ductus deferens of human t.s.
- 10 - Glandula vesiculosa of human sec.
- 11 - Penis of human sec. (infant)
- 12 - Human uterus (proliferative phase) sec.
- 13 - Human uterus (secretory phase) sec.
- 14 - Uterine cervix of human sec.
- 15 - Oviduct of human t.s.
- 16 - Ampulla of uterine tube of human t.s.
- 17 - Vagina of human sec.
- 18 - Human mammary gland (active phase) sec.
- 19 - Placenta of human sec.
- 20 - Ovary of human sec.
- 21 - Human corpus luteum sec.

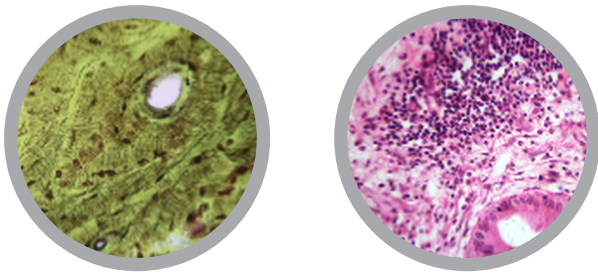
For slide set prices see [page 31](#). If you are interested in purchasing individual slides [CLICK HERE](#)

Cat #: CH-HIST9 - ORAL HISTOLOGY SLIDE SET - 39 slides



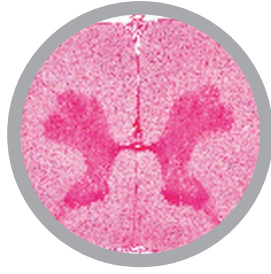
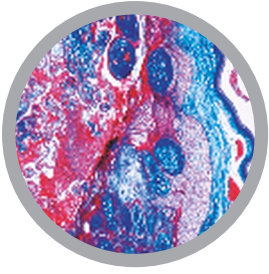
- 1 - Tooth sec.
- 2 - Tooth abrasive disc
- 3 - Periodontal tissue sec.
- 4 - Gum sec.
- 5 - Alveolar bone slides
- 6 - Soft palate slides
- 7 - Hard palate slides
- 8 - Lip slide
- 9 - Buccal mucosa slides
- 10 - Papillae filiformes sec.
- 11 - Circumvallate papillae
- 12 - Foliate papillae
- 13 - Parotid gland sec.
- 14 - Glandula submandibularis sec.
- 15 - Sublingual gland sec.
- 16 - Enamel - Transverse ground section t.s.
- 17 - Enamel - Longitudinal ground section l.s.
- 18 - Enamel - Transverse ground section in human tooth t.s.
- 19 - Dentin - Transverse ground section t.s.
- 20 - Dentin - Longitudinal ground section l.s.

- 21 - Dentin - Decalcified section in a tooth t.s.
- 22 - Dentin - Decalcified section in a tooth l.s.
- 23 - Cementum - Transverse ground section t.s.
- 24 - Cementum - Longitudinal ground section l.s.
- 25 - Cementum - Decalcified section in a tooth t.s.
- 26 - Cementum - Decalcified section in a tooth l.s.
- 27 - Pulp - Decalcified section in human tooth l.s.
- 28 - Pulp - Decalcified section in human tooth t.s.
- 29 - Periodontal ligament - Decalcified section , tooth in-situe (mesio-distal section)
- 30 - Periodontal ligament - Decalcified section of jaw & teeth in-side (buccolingual section)
- 31 - Bone - Longitudinal ground section in long bone l.s.
- 32 - Bone - Transverse ground section in long bone t.s.
- 33 - Bone - Decalcified section in cancellous bone
- 34 - Mucous Membrane - Coronal section in the tongue t.s.
- 35 - Mucous Membrane - Sagital section in the tongue l.s.
- 36 - Mucous Membrane - Filiform papilla
- 37 - Mucous Membrane - Fungiformer papilla
- 38 - Taste Buds
- 39 - Attached epithelium - dentogingival junction



- 1 - Simple columnar epithelium of human sec.
- 2 - Simple cuboidal epithelium of human sec.
- 3 - Pseudostratified ciliated columnar epithelium of human sec.
- 4 - Simple columnar ciliated epithelium of human sec.
- 5 - Stratified squamous epithelium of human sec.
- 6 - Epithelium cells of cavitas oris of human w.s.
- 7 - Loose connective tissue of human sec.
- 8 - Adipose tissue of human sec.
- 9 - Hyaline cartilage of human sec.
- 10 - Fibrous cartilage of human sec.
- 11 - Elastic cartilage of human sec.
- 12 - Smooth muscle isolated of human sec.
- 13 - Skeletal muscle of human t.s.and l.s. (H&E)
- 14 - Skeletal muscle of human l.s. (hematoxylin staining)
- 15 - Skeletal muscle isolated of human w.s.
- 16 - Cardiac muscle of human sec. (H&E)
- 17 - Human bone grinding w.s.
- 18 - Hard bone of human t.s. (thionin-picric acid staining)
- 19 - Hard bone of human l.s. (thionin-picric acid staining)
- 20 - Human toe bone l.s.
- 21 - Spinal cord of human t.s.
- 22 - Myelinated nerve fiber of human t.s.and l.s. (H&E)
- 23 - Myelinated nerve fiber of human t.s.and l.s. (silver staining)
- 24 - Tactile corpuscle of human sec.
- 25 - Lamellar corpuscle of human sec.
- 26 - Cerebrum of human sec. (silver staining)
- 27 - Cerebrum of human sec. (H&E)
- 28 - Cerebellum of human sec. (H&E)
- 29 - Cerebellum of human sec. (silver staining)
- 30 - Cardiac muscle of human sec.
- 31 - Cardiac valve of human sec.
- 32 - Human medium-sized artery and vein sec.
- 33 - Large artery of human sec.
- 34 - Large vein of human sec.
- 35 - Human Heart sec. (showing Purkinje cell)
- 36 - Blood (TYPE A.B.O) of human smear
- 37 - Blood of human smear (H&E)
- 38 - Blood of human smear (stained with Giemsa)
- 39 - Trachea of human t.s.
- 40 - Trachea of human l.s.
- 41 - Human Lung sec.
- 42 - Epiglottic cartilage of human sagittal section
- 43 - Lymphoid node of human sec.
- 44 - Spleen of human sec.
- 45 - Thymus of human sec.
- 46 - Palatine tonsil of human sec.
- 47 - Red bone marrow of human t.s.
- 48 - T-lymphocyte (E rosette assay)
- 49 - Microphage w.m. (phagocytosis)
- 50 - Macrophage w.m. (phagocytosis)
- 51 - Lymphocyte transformation w.m.
- 52 - Pineal gland sec.
- 53 - Thyroid gland of human sec.
- 54 - Adrenal gland of human sec.
- 55 - Human pituitary sec.
- 56 - Circumvallate papillae
- 57 - Liver of human sec. (show bile canaliculus of liver)
- 58 - Tooth sec.
- 59 - Tongue of human l.s. (show intertal structure)
- 60 - Oesophagus of human t.s.
- 61 - Stomach of human t.s.
- 62 - Gastric section of stomach of human sec.
- 63 - Small intestine of human t.s.
- 64 - Small intestine of human l.s.
- 65 - Jejunum of human sec.
- 66 - Duodenum of human sec.
- 67 - Ileum of human sec.
- 68 - Vermiform appendix of human sec.
- 69 - Large intestine of human l.s.
- 70 - Large intestine of human t.s.
- 71 - Rectum sec.
- 72 - Parotid gland of human sec.
- 73 - Submandibular gland of human sec.
- 74 - Sublingual gland of human sec.
- 75 - Gall bladder of human sec.
- 76 - Urinary bladder of human
- 77 - Kidney of human sec.
- 78 - Ureter of human t.s.
- 79 - Kidney of human through renal cortex t.s.
- 80 - Testis of human sec.
- 81 - Spermatozoon of human smear
- 82 - Epididymis of human sec.
- 83 - Prostate of human sec.
- 84 - Ductus deferens of human t.s.
- 85 - Glandula vesiculosa of human sec.
- 86 - Penis of human sec. (infant)
- 87 - Human uterus (proliferative phase) sec.
- 88 - Human uterus (secretory phase) sec.
- 89 - Uterine cervix of human sec.
- 90 - Oviduct of human t.s.
- 91 - Ampulla of uterine tube of human t.s.
- 92 - Vagina of human sec.
- 93 - Human mammary gland (active phase) sec.
- 94 - Placenta of human sec.
- 95 - Ovary of human sec.
- 96 - Human corpus luteum sec.
- 97 - Human eyelid sec.
- 98 - Lip slide
- 99 - Skin of human (show sweat gland) sec.
- 100 - Skin of human (show hair follicle) sec.
- 101 - Skin of human (show hair follicle) t.s.
- 102 - Skin of human back sec.
- 103 - Abdominal skin of human sec.
- 104 - Skin of human (show stratum corneum) sec.
- 105 - Hair of human w.s.

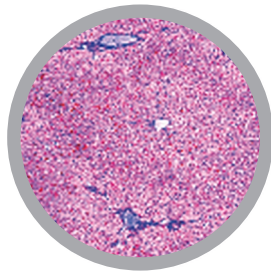
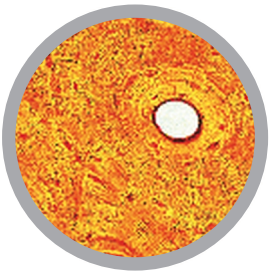
Cat #: JL-1HPM - NORMAL HUMAN HISTOLOGY SLIDE SET - 40 slides



- 1 - Squamous epithelium, human, isolated cells
- 2 - Areolar connective tissue, human w.m.
- 3 - Hyaline cartilage, human t.s.
- 4 - Compact bone, human t.s.
- 5 - Striated muscle, human l.s.
- 6 - Heart muscle, human l.s. and t.s.
- 7 - Artery, human t.s.
- 8 - Vein, human t.s.
- 9 - Lung, human t.s.
- 10 - Blood smear, human
- 11 - Spleen, human t.s.
- 12 - Thyroid gland, human t.s.
- 13 - Thymus gland from human child t.s.
- 14 - Tongue, human t.s.
- 15 - Tooth, human l.s.
- 16 - Parotid, human gland t.s.

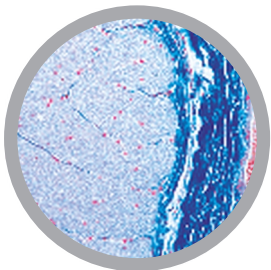
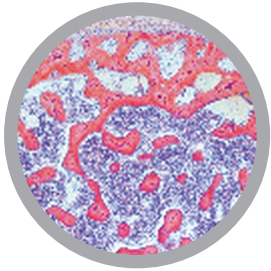
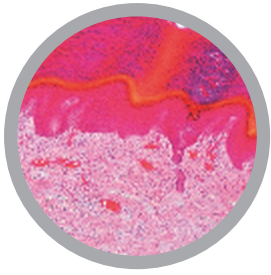
- 17 - Oesophagus, human t.s.
- 18 - Stomach, human, fundic region t.s.
- 19 - Duodenum, human t.s. (small intestine)
- 20 - Colon, human t.s. (large intestine)
- 21 - Pancreas, human t.s.
- 22 - Liver, human t.s.
- 23 - Vermiform appendix, human t.s.
- 24 - Kidney, human t.s.
- 25 - Adrenal (suprarenal) gland, human t.s.
- 26 - Ovary, human t.s.
- 27 - Uterus, human t.s.
- 28 - Placenta, human t.s.
- 29 - Testis, human t.s.
- 30 - Epididymis, human t.s.
- 31 - Cerebrum, human t.s.
- 32 - Cerebellum, human t.s.
- 33 - Spinal cord, human t.s.
- 34 - Sympathetic ganglion, human t.s.
- 35 - Skin of palm, human t.s.
- 36 - Scalp, human, l.s. of hair follicles
- 37 - Scalp, human, t.s. of hair follicles
- 38 - Retina, human t.s.
- 39 - Finger tip from foetus with nail development l.s.
- 40 - Mammary gland, human t.s.

Cat #: JL-2HPM - HUMAN HISTOLOGY PART 1, SLIDE SET - 50 slides



- 1 - Isolated squamous epithelium, human
- 2 - Connective tissue, human, sec.
- 3 - Columnar epithelium, human gall bladder, t.s.
- 4 - Ciliated epithelium, human trachea, t.s.
- 5 - Smooth muscles, human, l.s. and t.s.
- 6 - Striated muscles, human, l.s.
- 7 - Heart muscles, human, l.s. and t.s.
- 8 - Hyaline cartilage, human, sec.
- 9 - Elastic cartilage of epiglottis, human, t.s.
- 10 - Bone, compact substance, human, t.s.
- 11 - White fibrous tissue (tendon), human, l.s.
- 12 - Red bone marrow, human, t.s.
- 13 - Scalp, human, l.s. of hair follicles
- 14 - Artery, human, t.s.
- 15 - Vein, human, t.s.
- 16 - Blood smear, human, Giemsa stain
- 17 - Lung, human, t.s.
- 18 - Larynx of human foetus, t.s.
- 19 - Lymph gland, human, t.s.
- 20 - Thyroid gland, human, t.s.
- 21 - Pituitary gland, human, t.s.

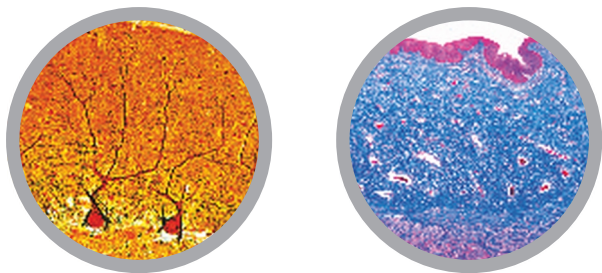
- 22 - Spleen, human, t.s.
- 23 - Tongue, human, t.s.
- 24 - Oesophagus, human, t.s.
- 25 - Sublingual gland, human, t.s.
- 26 - Stomach, pyloric region, human, t.s.
- 27 - Pancreas, human, t.s.
- 28 - Small intestine, human, t.s.
- 29 - Large intestine, human, t.s.
- 30 - Liver, human, t.s.
- 31 - Kidney, human, t.s.
- 32 - Adrenal gland, human, t.s.
- 33 - Ureter, human, t.s.
- 34 - Urinary bladder, human, t.s.
- 35 - Ovary, human, t.s.
- 36 - Uterus, human, t.s.
- 37 - Uterine tube, human, t.s.
- 38 - Placenta, human, t.s.
- 39 - Umbilical cord, human, t.s.
- 40 - Mammary gland, human, sec.
- 41 - Testis, human, t.s.
- 42 - Epididymis, human, t.s.
- 43 - Olfactory epithelium, human, t.s.
- 44 - Retina, human, t.s.
- 45 - Internal ear, human foetal, t.s.
- 46 - Touch corpuscles in human skin, t.s.
- 47 - Nerve, human, l.s.
- 48 - Spinal cord, human, t.s.
- 49 - Cerebellum, human, t.s.
- 50 - Cerebrum, cortex, human, t.s.



- 1 - Soft palate, human t.s.
- 2 - Adipose tissue, human, sec. stained for fat
- 3 - White fibrous cartilage, human intervertebral disc, sec.
- 4 - Striated (skeletal) muscle, human t.s.
- 5 - Spongy (cancellous) bone, human t.s.
- 6 - Bone development (intermembranous), vertical l.s. of foetal skull-cap (cranial bone)
- 7 - Bone development (intracartilaginous), l.s. of foetal finger
- 8 - Joint of human foetus, l.s.
- 9 - Tooth, human, t.s. of crown
- 10 - Tooth, human, complete l.s.
- 11 - Tooth development from human foetus, medium stage l.s.
- 12 - Aorta, human, t.s. routine stained
- 13 - Trachea from human foetus t.s.
- 14 - Thymus from human child, t.s.
- 15 - Parathyroid gland (Gl. parathyreoidea), human t.s.
- 16 - Tonsil (Tonsilla palatina), human t.s.
- 17 - Parotid gland (Gl. parotis), human t.s.
- 18 - Submaxillary gland (Gl. submandibularis), human t.s.
- 19 - Stomach, fundic region, human t.s.
- 20 - Stomach, cardiac region, human t.s.
- 21 - Jejunum, human t.s.
- 22 - Small intestine (Duodenum) t.s. colouring of goblet cells, PAS-HE
- 23 - Vermiform appendix, human t.s.
- 24 - Rectum, human t.s.
- 25 - Gall bladder, human t.s.
- 26 - Liver of human foetus sec., developing blood cells
- 27 - Urethra, human, t.s.
- 28 - Seminal vesicle (Gl. vesiculosa), human t.s.
- 29 - Spermatic cord (Ductus deferens), human t.s.
- 30 - Prostate, human, t.s.
- 31 - Sperm smear, human
- 32 - Corpus luteum in t.s. of human ovary
- 33 - Vagina, human t.s.
- 34 - Cerebral cortex, human, t.s. silvered (Golgi or Palmgren)
- 35 - Cerebral cortex, human, t.s. stained for neuroglial cells after Held
- 36 - Cerebellum, human, t.s. silvered (Golgi or Palmgren)
- 37 - Thalamus, human, stained after Klüver - Barrera
- 38 - Medulla oblongata, human, t.s. routine stained
- 39 - Spinal cord, human, t.s. silvered (Golgi or Palmgren)
- 40 - Sympathetic ganglion, human t.s. routine stained
- 41 - Peripheral nerve, human t.s.
- 42 - Optic nerve, human t.s.
- 43 - Cornea from eye, human t.s.
- 44 - Eyelid, human, t.s.
- 45 - Skin from finger tip, human, vertical l.s.
- 46 - Scalp, human, horizontal l.s. shows t.s. of hair follicles
- 47 - Nail development, sagittal l.s. finger tip of human foetus
- 48 - Human chromosomes in smear from culture of blood, male
- 49 - Human chromosomes in smear from culture of blood, female
- 50 - Barr bodies (human sex chromatin) in smear from female squamous epithelium \*

For slide set prices see [page 31](#). If you are interested in purchasing individual slides [CLICK HERE](#)





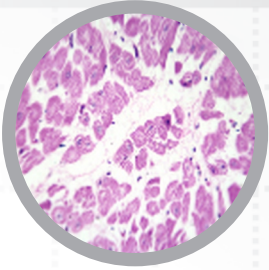
**Mostly stained in clear Hematoxyline - Eosine (HE)**

- 1 - Squamous epithelium, isolated cells from human mouth, smear
- 2 - Stratified, non-cornified squamous epithelium, section of oesophagus
- 3 - Simple columnar epithelium, in sec. of secreting tubules of human kidney
- 4 - Simple ciliated columnar epithelium, in t.s. of oviduct
- 5 - Simple cuboidal epithelium, in sec. of human thyroid gland
- 6 - Transitional epithelium, in sec. of human bladder
- 7 - Glandular epithelium, in sec. of human colon with unicellular mucous glands
- 8 - Areolar connective tissue, human w.m.
- 9 - Embryonic connective tissue from human foetus, sec.
- 10 - Adipose tissue, human, sec. fat removed to show the cells
- 11 - Hyaline cartilage, human t.s.
- 12 - Yellow elastic cartilage, human, sec. stained for elastic fibres
- 13 - White fibrous cartilage, human sec.
- 14 - Compact bone, human t.s.
- 15 - Compact bone, human l.s.
- 16 - Bone development (intracartilaginous), l.s. of foetal finger
- 17 - Bone development (intermembranous), vertical l.s. of foetal skull-cap (cranial bone)
- 18 - Striated (skeletal) muscle, human l.s.
- 19 - Striated (skeletal) muscle, human t.s.
- 20 - Smooth (involuntary) muscle, human l.s. and t.s.
- 21 - Heart (cardiac) muscle, human l.s. and t.s.
- 22 - Artery, human, t.s. stained for elastic fibres
- 23 - Vein, human, t.s. stained for elastic fibres
- 24 - Aorta, human, t.s. routine stained
- 25 - Blood smear, human, Wright's stain
- 26 - Trachea, human t.s.
- 27 - Trachea, human l.s.
- 28 - Trachea from human fetus t.s.
- 29 - Lung, human, sec. routine stained
- 30 - Lung from human foetus, sec.
- 31 - Lymphnode, human t.s.
- 32 - Tonsil (Tonsilla palatina), human t.s.
- 33 - Spleen, human t.s.
- 34 - Bone marrow, human t.s.
- 35 - Thymus from human child, t.s.
- 36 - Thyroid gland (Gl. thyroidea), human t.s.
- 37 - Adrenal gland (Gl. suprarenalis), human t.s.
- 38 - Pituitary gland (Hypophysis), human t.s.
- 39 - Pineal body (Epiphysis), human t.s.
- 40 - Lip, human vertical l.s.
- 41 - Tooth, human, t.s. of crown
- 42 - Tooth, human, l.s. of entire specimen
- 43 - Tooth development from human foetus, medium stage l.s.
- 44 - Tongue, human, sec. with filiform papillae
- 45 - Tongue, human, sec. with fungiform papillae
- 46 - Soft palate, human t.s.
- 47 - Oesophagus, human t.s.
- 48 - Stomach, fundic region, human t.s.
- 49 - Duodenum, human t.s.
- 50 - Jejunum, human t.s.
- 51 - Ileum, human t.s.
- 52 - Vermiform appendix, human t.s.
- 53 - Colon, human t.s.
- 54 - Parotid gland (Gl. parotis), human t.s.
- 55 - Submaxillary gland (Gl. submandibularis), human t.s.
- 56 - Pancreas, human t.s.
- 57 - Liver, human t.s.
- 58 - Gall bladder, human t.s.
- 59 - Kidney, human t.s.
- 60 - Renal papilla, human t.s.
- 61 - Kidney from human foetus, t.s.
- 62 - Ureter, human t.s.
- 63 - Urinary bladder, human t.s.
- 64 - Urethra, prostatic part, human t.s.
- 65 - Ovary, mature, human t.s.
- 66 - Ovary with Corpus luteum, human t.s.
- 67 - Oviduct (fallopian tube), t.s. in region of ampulla
- 68 - Uterus, human, proliferative stage t.s.
- 69 - Uterus, human, pregnant (gravid), t.s.
- 70 - Placenta, human t.s.
- 71 - Umbilical cord (navel string), human t.s.
- 72 - Vagina, human t.s.
- 73 - Testis from human child, t.s.
- 74 - Testis from human adult, mature stage t.s.
- 75 - Epididymis, human t.s.
- 76 - Sperm smear, human
- 77 - Spermatic cord (Ductus deferens), human t.s.
- 78 - Seminal vesicle (Gl. vesiculosa), human t.s.
- 79 - Prostata of young man, t.s.
- 80 - Penis from human foetus, t.s.
- 81 - Cerebral cortex, human, t.s. routine stained
- 82 - Cerebellum, human, t.s. routine stained
- 83 - Cerebellum from human foetus, t.s. routine stained
- 84 - Cerebrum and cerebellum composite slide, human, t.s. routine stained
- 85 - Medulla oblongata, human, t.s. routine stained
- 86 - Medulla oblongata from human foetus, t.s.
- 87 - Spinal cord, human t.s. of cervical region
- 88 - Spinal cord, human t.s. of thoracic region
- 89 - Spinal cord, human t.s. of lumbar region
- 90 - Spinal cord, human l.s. routine stained
- 91 - Spinal ganglion, human t.s.
- 92 - Peripheral nerve, human t.s.
- 93 - Peripheral nerve, human l.s.
- 94 - Optic nerve, human t.s.
- 95 - Retina from eye, t.s.
- 96 - Olfactory epithelium, human t.s.
- 97 - Skin from palm, human, vertical l.s.
- 98 - Body skin, white, vertical l.s.
- 99 - Scalp, vertical l.s. shows l.s. of hair follicles, human
- 100 - Scalp, horizontal l.s. shows t.s. of hair follicles, human
- 101 - Scalp of human foetus, vertical l.s. shows l.s. of hairs
- 102 - Finger tip of human foetus, sagittal l.s. showing nail development
- 103 - Mammary gland, active, human t.s.

\*\* Depending on availability this set can occasionally consist of 100 slides only. It is also possible that some of the slides may be different to the ones advertised. If this occurs suitable replacements are offered. If this is an issue please check with us before ordering.

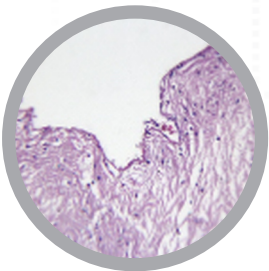
# HUMAN PATHOLOGY SLIDE SETS

## Cat #: CH-PATH1 - CARDIAC DISEASES SLIDE SET - 16 slides



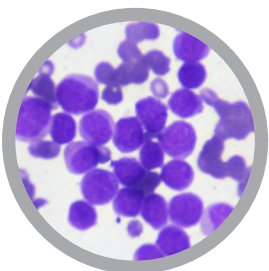
- 1 - Human myocardial hypertrophy sec.
- 2 - Cardiac muscle fatty degeneration sec.
- 3 - Human brown atrophy of myocardium sec.
- 4 - Human myocardial hypertrophy sec.
- 5 - Myocardial infarction sec.
- 6 - Human aortitis sec.
- 7 - Rheumatic endocarditis sec.
- 8 - Bacterial myocarditis sec.
- 9 - Semi-organized fibrous pericarditis sec.
- 10 - Rheumatic myocarditis sec.
- 11 - Angioma sec.
- 12 - Coronary atherosclerosis sec.
- 13 - Cardiac muscle of Keshan disease sec.
- 14 - Cardiac muscle lipofuscin sec.
- 15 - Cardiac muscle cell coagulation necrosis sec.
- 16 - Viral myocarditis sec.

## Cat #: CH-PATH2 - VASCULAR DISEASES SLIDE SET - 17 slides



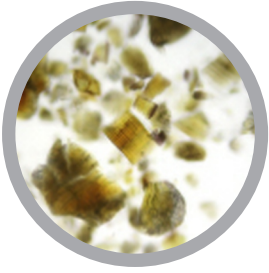
- 1 - Mixed thrombus sec.
- 2 - Hyaline thrombus sec.
- 3 - Hemorrhagic infarct of lung sec.
- 4 - Renal anemic infarct sec.
- 5 - Chronic venous congestion of liver sec.
- 6 - Sanguineous apoplexy sec.
- 7 - Anemic infarct of spleen sec.
- 8 - Pulmonary congestion (heart-failure cells) sec.
- 9 - Pulmonary amniotic embolism sec.
- 10 - Human infarct of brain
- 11 - Organized thrombus sec.
- 12 - Intravenous thrombus sec.
- 13 - Fibrinoid necrosis of vascular wall sec.
- 14 - Atherosclerosis sec.
- 15 - Transparent thrombus sec.
- 16 - Takayasu's sec.

## Cat #: CH-PATH3 - HEMATOLOGIC DISEASES SLIDE SET - 12 slides



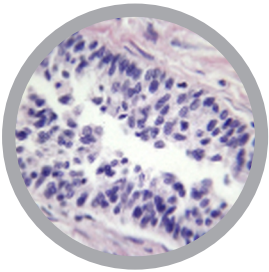
- 1 - Non-Hodgkin lymphoma sec.
- 2 - Hodgkin lymphoma sec.
- 3 - Human tissue system histiocytosis
- 4 - Acute lymphoblastic leukemia (L1)
- 5 - Acute lymphoblastic leukemia (L2)
- 6 - Acute lymphoblastic leukemia (L3)
- 7 - Acute leukemia bone marrow cells differentiated (M0)
- 8 - Immature acute myeloid leukemia (M1)
- 9 - Mature acute myeloid leukemia (M2)
- 10 - Acute promyelocytic leukemia (M3)
- 11 - Acute monocytic leukemia (M4)
- 12 - Acute monocytic leukemia (M5)
- 13 - Acute hemolytic anemia
- 14 - Megaloblastic anaemia B12 deficiency anemia

Cat #: CH-PATH4 - URINARY DISEASES SLIDE SET - 27 slides



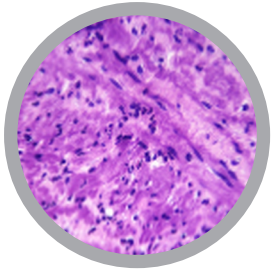
- 1 - Vitreous degeneration of renal arteriole sec.
- 2 - Human renal tubule epithelium edema sec.
- 3 - Human cloudy swelling of kidney sec.
- 4 - Human kidney granular degeneration sec.
- 5 - Human renal tubular epithelial cells
- 6 - Chronic pyelonephritis sec.
- 7 - Acute nephritis sec.
- 8 - Acute glomerulonephritis sec.
- 9 - Chronic glomerulonephritis sec.
- 10 - Diffuse hyperplastic glomerular nephritis sec.
- 11 - Diffuse sclerosing glomerular nephritis sec.
- 12 - Acute pyelonephritis sec.
- 13 - Renal clear cell carcinoma sec.
- 14 - Kidney stone w.m.
- 15 - Renal tuberculosis sec.
- 16 - Pressure atrophy of kidney sec.
- 17 - Interstitial nephritis sec.
- 18 - Diffuse capillary hyperplastic glomerular nephritis sec.
- 19 - Granular contracted kidney sec.
- 20 - Renal Anemic Infarct sec.
- 21 - Wilms' tumor sec.
- 22 - Nephropostasis sec.
- 23 - Transitional cell carcinoma of bladder (1st-degree) sec.
- 24 - Transitional cell carcinoma of bladder (2nd-degree) sec.
- 25 - Transitional cell carcinoma of bladder (3rd-degree) sec.
- 26 - Carcinoma of urinary bladder sec.
- 27 - Abscess of Kidney sec.

Cat #: CH-PATH2 - REPRODUCTIVE DISEASES SLIDE SET - 29 slides



- 1 - Hysteroma sec.
- 2 - Carcinoma in-situ of cervix sec.
- 3 - Adenocarcinoma of cervix sec.
- 4 - Endometrial hyperplasia sec.
- 5 - Adenocarcinoma of endometrium sec.
- 6 - Choriocarcinoma sec.
- 7 - Papillary adenofibroma of ovary sec.
- 8 - Mucous cystadenofibroma of ovary sec.
- 9 - Fibroadenosis of breast sec.
- 10 - Medullary carcinoma of breast sec.
- 11 - Polyp of cervix sec.
- 12 - Cervical erosion sec.
- 13 - Ovarian cyst sec.
- 14 - Chronic endometritis sec.
- 15 - Squamous cell metaplasia of cervical mucosa sec.
- 16 - Adenomyosis sec.
- 17 - Teratoma sec.
- 18 - Hydatidiform mole sec.
- 19 - Invasive ductal carcinoma sec.
- 20 - Pulmonary amniotic embolism sec.
- 21 - Human hyperplasia of prostate sec.
- 22 - Seminoma sec.
- 23 - Congenital agenesis of testis (47, XXY type)
- 24 - Prostatic cancer (well-differentiated)
- 25 - Prostatic cancer (poorly differentiated)
- 26 - Papillary serous cystadenocarcinoma of ovary sec.
- 27 - Leiomyoma of uterus (human) sec.
- 28 - Squamous cell carcinoma of cervix sec.
- 29 - Scirrhus carcinoma of mammary gland sec.

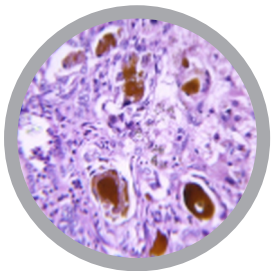
Cat #: CH-PATH6 - DIGESTIVE DISEASES SLIDE SET - 27 slides



- 1 - Stomach mucous carcinoma sec.
- 2 - Adenocarcinoma of stomach sec.
- 3 - Chronic gastric ulcer sec.
- 4 - Squamous cell carcinoma of the esophagus sec.
- 5 - Ordinary gastritis sec.
- 6 - Chronic cholecystitis sec.
- 7 - Epidermoid carcinoma of esophagus sec.
- 8 - Chronic atrophic gastritis sec.
- 9 - Cholangiocarcinoma sec.
- 10 - Chronic appendicitis sec.
- 11 - Bacillary dysentery sec.
- 12 - Suppurative appendicitis sec.
- 13 - Polypous adenoma of intestine sec.
- 14 - Colon adenocarcinoma sec.
- 15 - Ileotyphus sec.
- 16 - Acute simple appendicitis sec.
- 17 - Regional enteritis sec.
- 18 - Fibrinous enteritis sec.
- 19 - Carcinoid of colon sec.
- 20 - Rectal adenocarcinoma sec.
- 21 - Well-differentiated adenocarcinoma of intestine sec.
- 22 - Moderately differentiated adenocarcinoma of intestine sec.
- 23 - Poorly differentiated adenocarcinoma of intestine sec.
- 24 - Villous adenoma sec.
- 25 - Pseudomembranous colitis sec.
- 26 - Human intestinal metaplasia sec.
- 27 - Acute hemorrhagic pancreatitis sec.

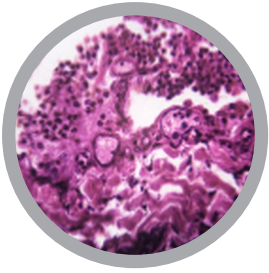
For slide set prices see [page 31](#). If you are interested in purchasing individual slides [CLICK HERE](#)

Cat #: CH-PATH7 - DISEASES OF THE LIVER SLIDE SET - 26 slides



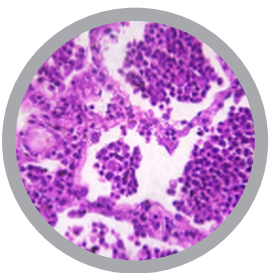
- 1 - Human liver cell hydropic degeneration sec.
- 2 - Human liver cell fatty degeneration sec.
- 3 - Human liver granular degeneration sec.
- 4 - Chronic venous congestion of liver sec.
- 5 - Liver abscess sec.
- 6 - Virus hepatitis sec.
- 7 - Chronic active hepatitis sec.
- 8 - Acute mild hepatitis sec.
- 9 - Acute fatal hepatitis sec.
- 10 - Alcoholic hepatitis sec.
- 11 - Laennec's cirrhosis sec.
- 12 - Hepatic congestion sec.
- 13 - Hepatocirrhosis sec.
- 14 - Hepatic schistosomiasis sec.
- 15 - Hepatic edema sec.
- 16 - Acute general hepatitis sec.
- 17 - Chronic poisoning hepatitis sec.
- 18 - Subacute poisoning hepatitis sec.
- 19 - Micronodular cirrhosis sec.
- 20 - Cloudy swelling of liver sec.
- 21 - Hepatocellular carcinoma sec.
- 22 - Necrosis of liver cells sec.
- 23 - Liver cyst formation sec.
- 24 - Acute viral hepatitis sec.
- 25 - Liver amyloidosis sec.
- 26 - Portal cirrhosis sec.

Cat #: CH-PATH8 - RESPIRATORY DISEASES SLIDE SET - 38 slides



- 1 - Squamous metaplasia of bronchus sec.
- 2 - Human bronchiectasis sec.
- 3 - Chronic pulmonary congestion of the lung sec.
- 4 - Hemorrhagic infarct of lung sec.
- 5 - Pulmonary edema sec.
- 6 - Fibrinous pleurisy sec.
- 7 - Lung abscess sec.
- 8 - Chronic bronchitis sec.
- 9 - Diffuse pulmonary emphysema sec.
- 10 - Lobar pneumonia (red liver period) sec.
- 11 - Lobar pneumonia (grey liver period) sec.
- 12 - Bronchial pneumonia (lobular pneumonia) sec.
- 13 - Viral pneumonia sec.
- 14 - Silicosis sec.
- 15 - Asbestosis sec.
- 16 - Squamous cell carcinoma of lung sec.
- 17 - Small cell lung cancer sec.
- 18 - Adenocarcinoma of lung sec.
- 19 - Anthracosis sec.
- 20 - Nasal polyp sec.
- 21 - Acute pulmonary hemorrhage sec.
- 22 - Smokers lung l.s.
- 23 - White plague (tubercle) sec.
- 24 - Pneumonokoniosis sec.
- 25 - Lung adenosquamous carcinoma sec.
- 26 - Lung adenosquamous carcinoma (3rd-degree) sec.
- 27 - Cheesy necrosis of nodule sec.
- 28 - Tuberculous pneumonia sec.
- 29 - Pulmonary emphysema sec.
- 30 - Tuberculous pleurisy sec.
- 31 - Focal pulmonary tuberculosis sec.
- 32 - Squamous metaplasia of bronchial mucous epithelium sec.
- 33 - Caseous pneumonia sec.
- 34 - Acute miliary tuberculosis sec.
- 35 - Interstitial pneumonia sec.
- 36 - Fibrous pneumonia sec.
- 37 - Nasopharyngeal vacuolar nuclear carcinoma sec.
- 38 - Nasopharyngeal squamous cell carcinoma sec.

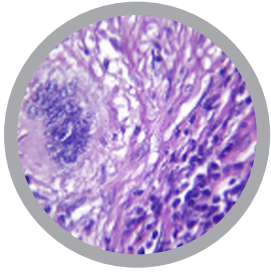
Cat #: CH-PATH9 - PNEUMONIAS SLIDE SET - 8 slides



- 1 - Lobar pneumonia (red liver period) sec.
- 2 - Lobar pneumonia (grey liver period) sec.
- 3 - Bronchial pneumonia (lobular pneumonia) sec.
- 4 - Viral pneumonia sec.
- 5 - Tuberculous pneumonia sec.
- 6 - Caseous pneumonia sec.
- 7 - Interstitial pneumonia sec.
- 8 - Fibrous pneumonia sec.

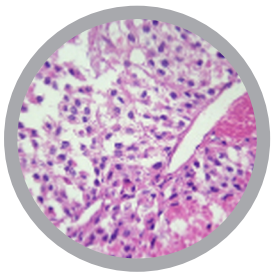
For slide set prices see [page 31](#). If you are interested in purchasing individual slides [CLICK HERE](#)

Cat #: CH-PATH10 - DISEASES OF THE LYMPHATIC SYSTEM SLIDE SET - 19 slides



- 1 - Vitreous degeneration of central artery of spleen sec.
- 2 - Human spleen (kidney) coagulative necrosis sec.
- 3 - Hyaline degeneration of arteriole of human spleen
- 4 - Hyaline degeneration of splenic capsule sec.
- 5 - Anemic infarct of spleen sec.
- 6 - Splenic infarction sec.
- 7 - Non-Hodgkin lymphoma sec.
- 8 - Hodgkin lymphoma sec.
- 9 - Acute lymphoblastic leukemia (L1)
- 10 - Acute lymphoblastic leukemia (L2)
- 11 - Acute lymphoblastic leukemia (L3)
- 12 - Adenocarcinoma of lymph gland sec.
- 13 - Human necrotizing lymphadenitis sec.
- 14 - Malignant lymphoma sec.
- 15 - Lymph node tuberculosis sec.
- 16 - Metastatic carcinoma of lymph node sec.
- 17 - Cheesy necrosis of lymph gland sec.
- 18 - Metastatic carcinoma of lymph node sec.
- 19 - Aplastic anaemia smear (bone marrow smears)

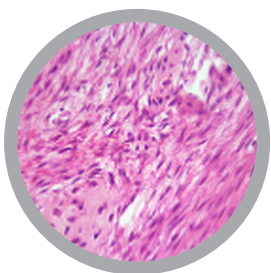
Cat #: CH-PATH11 - ENDOCRINE DISEASES SLIDE SET - 16 slides



- 1 - Endemic goiter sec.
- 2 - Toxic goiter sec.
- 3 - Thyroid adenoma sec.
- 4 - Papillary adenocarcinoma of thyroid gland sec.
- 5 - Follicular adenocarcinoma sec.
- 6 - Adrenal cortical adenomas sec.
- 7 - Adrenal cortical carcinoma sec.
- 8 - Hypophyseal adenoma sec.
- 9 - Simple goiter sec.
- 10 - Fibrous thyroiditis sec.
- 11 - Thyroid adenocarcinoma sec.
- 12 - Papillary adenofibroma of ovary sec.
- 13 - Mucous cystadenofibroma of ovary sec.
- 14 - Ovarian cyst sec.
- 15 - Seminoma sec.
- 16 - Congenital agenesis of testis (47, XXY type)

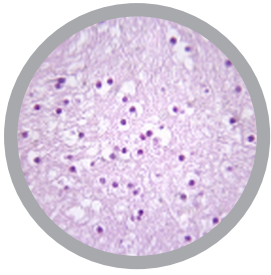
For slide set prices see [page 31](#). If you are interested in purchasing individual slides [CLICK HERE](#)

Cat #: CH-PATH12 - BONE DISEASES SLIDE SET - 13 slides



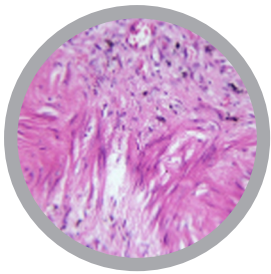
- 1 - Human osseous metaplasia sec.
- 2 - Human vertebral tuberculosis sec.
- 3 - Chronic osteomyelitis of jaw
- 4 - Osteoblastoma
- 5 - Osteoblast sarcoma
- 6 - Complex odontoma
- 7 - Calcifying cystic odontogenic tumor
- 8 - Odontogenic fibroma
- 9 - Ossifying fibroma
- 10 - Osteochondroma sec.
- 11 - Osteogenic sarcoma sec.
- 12 - Giant cell tumor of bone sec.
- 13 - Chondrosarcoma sec.

Cat #: CH-PATH13 - DISEASES OF THE NERVOUS SYSTEM SLIDE SET - 11 slides



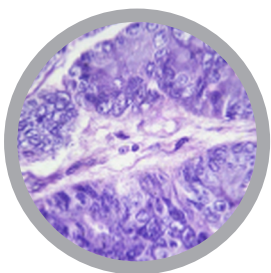
- 1 - Purulent meningitis sec.
- 2 - Epidemic encephalitis sec.
- 3 - Meningioma sec.
- 4 - Neurinoma sec.
- 5 - Neurofibroma sec.
- 6 - Neuroastrocytoma sec.
- 7 - Liquefactive necrosis of brain sec.
- 8 - Human infarct of brain
- 9 - Brain abscess sec.
- 10 - Glioma sec.
- 11 - Pyogenic meningitis sec.

Cat #: CH-PATH14 - BENIGN TUMOURS SLIDE SET - 27 slides

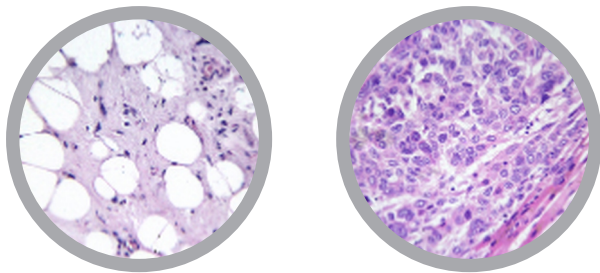


- 1 - Cutaneous papillomatosis sec.
- 2 - Polypoid adenoma of intestine sec.
- 3 - Fibroma sec.
- 4 - Embryonal-cell lipoma sec.
- 5 - Fibroadenoma of breast sec.
- 6 - Oral adenoma sec.
- 7 - Mucinous cystadenoma
- 8 - Thyroid adenoma sec.
- 9 - Hypophyseal adenoma sec.
- 10 - Papillary adenofibroma of ovary sec.
- 11 - Mucous cystadenofibroma of ovary sec.
- 12 - Adrenal cortical adenomas sec.
- 13 - Adamantoblastoma
- 14 - Salivary gland pleomorphic adenoma sec.
- 15 - Complex odontoma
- 16 - Meningioma sec.
- 17 - Neurinoma sec.
- 18 - Neurofibroma sec.
- 19 - Odontogenic keratocyst sec.
- 20 - Neurilemmoma sec.
- 21 - Giant cell tumor of bone sec.
- 22 - Leiomyoma of uterus (human) sec.
- 23 - Papilloma of skin sec.
- 24 - Hemangioma sec.
- 25 - Pindborg tumor (calcifying epithelial odontogenic tumor)
- 26 - Warthin's tumor
- 27 - Odontogenic myxoma

Cat #: CH-PATH18 - ADENOCARCINOMA SLIDE SET - 13 slides

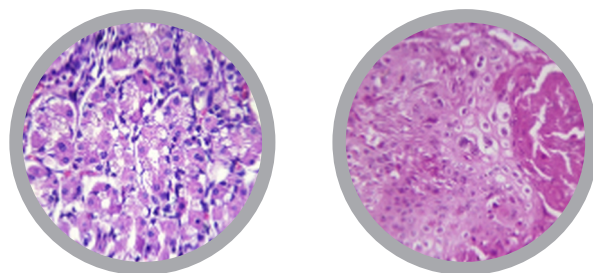


- 1 - Adenocarcinoma of lymph gland sec.
- 2 - Colon adenocarcinoma sec.
- 3 - Adenocarcinoma of lung sec.
- 4 - Adenocarcinoma of stomach sec.
- 5 - Rectal adenocarcinoma sec.
- 6 - Well-differentiated adenocarcinoma of intestine sec.
- 7 - Moderately differentiated adenocarcinoma of intestine sec.
- 8 - Poorly differentiated adenocarcinoma of intestine sec.
- 9 - Adenocarcinoma of cervix sec.
- 10 - Adenocarcinoma of endometrium sec.
- 11 - Follicular adenocarcinoma sec.
- 12 - Thyroid adenocarcinoma sec.
- 13 - Papillary adenocarcinoma of thyroid gland sec.



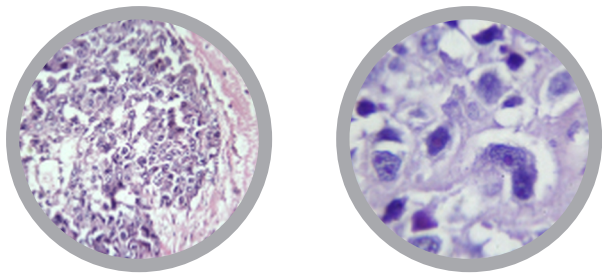
- 1 - Fibrosarcoma sec.
- 2 - Leiomyosarcoma sec.
- 3 - Sarcomatoid carcinoma sec.
- 4 - Endodermal sinus tumor sec.
- 5 - Melanoma sec.
- 6 - Adenocarcinoma of lymph gland sec.
- 7 - Metastatic carcinoma of lymph node sec.
- 8 - Stomach mucous carcinoma sec.
- 9 - Cornifying squamous cell carcinoma sec.
- 10 - Basal cell carcinoma sec.
- 11 - Squamous cell carcinoma of the esophagus sec.
- 12 - Carcinoid of colon sec.
- 13 - Colon adenocarcinoma sec.
- 14 - Squamous cell carcinoma of lung sec.
- 15 - Adenocarcinoma of lung sec.
- 16 - Lung adenosquamous carcinoma sec.
- 17 - Lung adenosquamous carcinoma (3rd-degree) sec.
- 18 - Epidermoid carcinoma of esophagus sec.
- 19 - Adenocarcinoma of stomach sec.
- 20 - Rectal adenocarcinoma sec.
- 21 - Well-differentiated adenocarcinoma of intestine sec.
- 22 - Moderately differentiated adenocarcinoma of intestine sec.
- 23 - Poorly differentiated adenocarcinoma of intestine sec.
- 24 - Hepatocellular carcinoma sec.
- 25 - Cholangiocarcinoma sec.
- 26 - Acinic cell carcinoma
- 27 - Adenoid cystic carcinoma
- 28 - Epithelial-myoepithelial carcinoma
- 29 - Nonspecific clear cell carcinoma
- 30 - Oral squamous cell carcinoma
- 31 - Renal clear cell carcinoma sec.
- 32 - Transitional cell carcinoma of bladder (1st-degree) sec.
- 33 - Transitional cell carcinoma of bladder (2nd-degree) sec.
- 34 - Transitional cell carcinoma of bladder (3rd-degree) sec.
- 35 - Carcinoma of urinary bladder sec.
- 36 - Carcinoma in-situ of cervix sec.
- 37 - Adenocarcinoma of cervix sec.
- 38 - Adenocarcinoma of endometrium sec.
- 39 - Choriocarcinoma sec.
- 40 - Medullary carcinoma of breast sec.
- 41 - Follicular adenocarcinoma sec.
- 42 - Adrenal cortical carcinoma sec.
- 43 - Thyroid adenocarcinoma sec.
- 44 - Wilms' tumor sec.
- 45 - Seminoma sec.
- 46 - Papillary adenocarcinoma of thyroid gland sec.
- 47 - Non-Hodgkin lymphoma sec.
- 48 - Hodgkin lymphoma sec.
- 49 - Prostatic carcinoma (well-differentiated)

- 50 - Prostatic carcinoma (poorly differentiated)
- 51 - Chondrosarcoma sec.
- 52 - Osteoblast sarcoma
- 53 - Osteoblastoma
- 54 - Glioma sec.
- 55 - Neuro astrocytoma sec.
- 56 - Scirrhous carcinoma of mammary gland sec.
- 57 - Papillary serous cystadenocarcinoma of ovary sec.
- 58 - Infiltrating type duct carcinoma of breast sec.
- 59 - Nasopharyngeal vacuolar nuclear carcinoma sec.
- 60 - Squamous cell carcinoma of cervix sec.
- 61 - Carcinoma of gingiva sec.
- 62 - Squamous Cell Carcinoma (SCC) high differentiation
- 63 - Mucoepidermoid carcinoma
- 64 - Liposarcoma sec.
- 65 - Nasopharyngeal squamous cell carcinoma sec.





Cat #: CH-PATH16 - RARE TUMOURS SLIDE SET - 27 slides

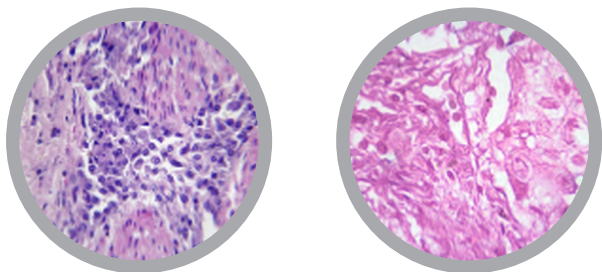


- 1 - Mucinous cystadenoma
- 2 - Giant cell tumor of bone sec.
- 3 - Pindborg tumor (calcifying epithelial odontogenic tumor)
- 4 - Odontogenic myxoma
- 5 - Leiomyosarcoma sec.
- 6 - Sarcomatoid carcinoma sec.
- 7 - Stomach mucous carcinoma sec.
- 8 - Carcinoid of colon sec.
- 9 - Lung adenosquamous carcinoma sec.
- 10 - Lung adenosquamous carcinoma (3rd-degree) sec.
- 11 - Choriocarcinoma sec.
- 12 - Chondrosarcoma sec.

- 13 - Cholangiocarcinoma sec.
- 14 - Acinic cell carcinoma
- 15 - Adenoid cystic carcinoma
- 16 - Epithelial-myoepithelial carcinoma
- 17 - Nonspecific clear cell carcinoma
- 18 - Transitional cell carcinoma of bladder (1st-degree) sec.
- 19 - Transitional cell carcinoma of bladder (2nd-degree) sec.
- 20 - Transitional cell carcinoma of bladder (3rd-degree) sec.
- 21 - Adrenal cortical carcinoma sec.
- 22 - Wilms' tumor sec.
- 23 - Seminoma sec.
- 24 - Osteoblastoma
- 25 - Carcinoma of gingiva sec.
- 26 - Nasopharyngeal vacuolar nuclear carcinoma sec.
- 27 - Nasopharyngeal squamous cell carcinoma sec.

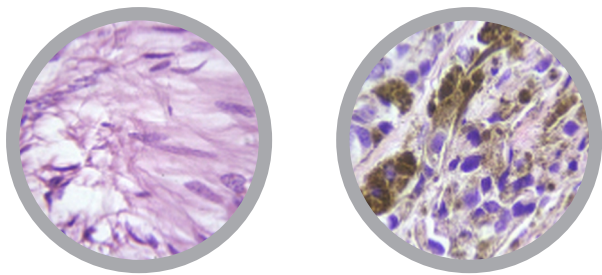
For slide set prices see [page 31](#). If you are interested in purchasing individual slides [CLICK HERE](#)

Cat #: CH-PATH17 - CARCINOMAS SLIDE SET - 35 slides



- 1 - Metastatic carcinoma of lymph node sec.
- 2 - Stomach mucous carcinoma sec.
- 3 - Cornifying squamous cell carcinoma sec.
- 4 - Squamous cell carcinoma of the esophagus sec.
- 5 - Squamous cell carcinoma of lung sec.
- 6 - Lung adenosquamous carcinoma (3rd-degree) sec.
- 7 - Epidermoid carcinoma of esophagus sec.
- 8 - Hepatocellular carcinoma sec.
- 9 - Cholangiocarcinoma sec.
- 10 - Renal clear cell carcinoma sec.
- 11 - Transitional cell carcinoma of bladder (1st-degree) sec.
- 12 - Transitional cell carcinoma of bladder (2nd-degree) sec.
- 13 - Transitional cell carcinoma of bladder (3rd-degree) sec.
- 14 - Carcinoma of urinary bladder sec.
- 15 - Carcinoma in-situ of cervix sec.
- 16 - Choriocarcinoma sec.
- 17 - Medullary carcinoma of breast sec.

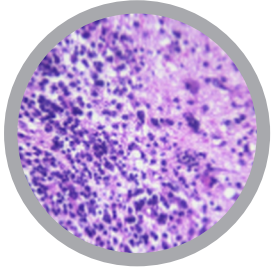
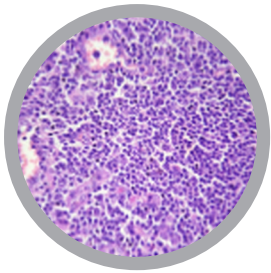
- 18 - Adrenal cortical carcinoma sec.
- 19 - Prostatic carcinoma (well-differentiated)
- 20 - Prostatic carcinoma (poorly differentiated)
- 21 - Acinic cell carcinoma
- 22 - Adenoid cystic carcinoma
- 23 - Epithelial-myoepithelial carcinoma
- 24 - Nonspecific clear cell carcinoma
- 25 - Oral squamous cell carcinoma
- 26 - Scirrhus carcinoma of mammary gland sec.
- 27 - Papillary serous cystadenocarcinoma of ovary sec.
- 28 - Infiltrating type duct carcinoma of breast sec.
- 29 - Mucoepidermoid carcinoma
- 30 - Nasopharyngeal vacuolar nuclear carcinoma sec.
- 31 - Squamous cell carcinoma of cervix sec.
- 32 - Carcinoma of gingiva sec.
- 33 - Squamous Cell Carcinoma (SCC) high differentiation
- 34 - Nasopharyngeal squamous cell carcinoma sec.



- 1 - Cutaneous papillomatosis sec.
- 2 - Polypoid adenoma of intestine sec.
- 3 - Fibroma sec.
- 4 - Embryonal-cell lipoma sec.
- 5 - Fibroadenoma of breast sec.
- 6 - Oral adenoma sec.
- 7 - Mucinous cystadenoma
- 8 - Thyroid adenoma sec.
- 9 - Hypophyseal adenoma sec.
- 10 - Papillary adenofibroma of ovary sec.
- 11 - Mucous cystadenofibroma of ovary sec.
- 12 - Adrenal cortical adenomas sec.
- 13 - Adamantoblastoma
- 14 - Salivary gland pleomorphic adenoma sec.
- 15 - Complex odontoma
- 16 - Meningioma sec.
- 17 - Neurinoma sec.
- 18 - Neurofibroma sec.
- 19 - Neuro astrocytoma sec.
- 20 - Odontogenic keratocyst sec.
- 21 - Neurilemmoma sec.
- 22 - Giant cell tumor of bone sec.
- 23 - Leiomyoma of uterus (human) sec.
- 24 - Papilloma of skin sec.
- 25 - Hemangioma sec.
- 26 - Pindborg tumor (calcifying epithelial odontogenic tumor)
- 27 - Warthin's tumor
- 28 - Odontogenic myxoma
- 29 - Fibrosarcoma sec.
- 30 - Leiomyosarcoma sec.
- 31 - Sarcomatoid carcinoma sec.
- 32 - Endodermal sinus tumor sec.
- 33 - Melanoma sec.
- 34 - Adenocarcinoma of lymph gland sec.
- 35 - Metastatic carcinoma of lymph node sec.
- 36 - Stomach mucous carcinoma sec.
- 37 - Cornifying squamous cell carcinoma sec.
- 38 - Basal cell carcinoma sec.
- 39 - Squamous cell carcinoma of the esophagus sec.
- 40 - Carcinoid of colon sec.
- 41 - Colon adenocarcinoma sec.
- 42 - Squamous cell carcinoma of lung sec.
- 43 - Adenocarcinoma of lung sec.
- 44 - Lung adenosquamous carcinoma sec.
- 45 - Lung adenosquamous carcinoma (3rd-degree) sec.
- 46 - Epidermoid carcinoma of esophagus sec.
- 47 - Adenocarcinoma of stomach sec.
- 48 - Rectal adenocarcinoma sec.
- 49 - Well-differentiated adenocarcinoma of intestine sec.
- 50 - Moderately differentiated adenocarcinoma of intestine sec.
- 51 - Poorly differentiated adenocarcinoma of intestine sec.

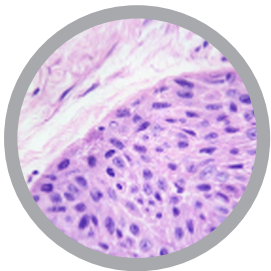
- 52 - Hepatocellular carcinoma sec.
- 53 - Cholangiocarcinoma sec.
- 54 - Acinic cell carcinoma
- 55 - Adenoid cystic carcinoma
- 56 - Epithelial-myoepithelial carcinoma
- 57 - Nonspecific clear cell carcinoma
- 58 - Oral squamous cell carcinoma
- 59 - Renal clear cell carcinoma sec.
- 60 - Transitional cell carcinoma of bladder (1st-degree) sec.
- 61 - Transitional cell carcinoma of bladder (2nd-degree) sec.
- 62 - Transitional cell carcinoma of bladder (3rd-degree) sec.
- 63 - Carcinoma of urinary bladder sec.
- 64 - Carcinoma in-situ of cervix sec.
- 65 - Adenocarcinoma of cervix sec.
- 66 - Adenocarcinoma of endometrium sec.
- 67 - Choriocarcinoma sec.
- 68 - Medullary carcinoma of breast sec.
- 69 - Follicular adenocarcinoma sec.
- 70 - Adrenal cortical carcinoma sec.
- 71 - Thyroid adenocarcinoma sec.
- 72 - Wilms' tumor sec.
- 73 - Seminoma sec.
- 74 - Papillary adenocarcinoma of thyroid gland sec.
- 75 - Non-Hodgkin lymphoma sec.
- 76 - Hodgkin lymphoma sec.
- 77 - Prostatic carcinoma (well-differentiated)
- 78 - Prostatic carcinoma (poorly differentiated)
- 79 - Chondrosarcoma sec.
- 80 - Osteoblast sarcoma
- 81 - Osteoblastoma
- 82 - Glioma sec.
- 83 - Scirrhous carcinoma of mammary gland sec.
- 84 - Papillary serous cystadenocarcinoma of ovary sec.
- 85 - Infiltrating type duct carcinoma of breast sec.
- 86 - Nasopharyngeal vacuolar nuclear carcinoma sec.
- 87 - Squamous cell carcinoma of cervix sec.
- 88 - Carcinoma of gingiva sec.
- 89 - Squamous Cell Carcinoma (SCC) high differentiation
- 90 - Mucoepidermoid carcinoma
- 91 - Liposarcoma sec.
- 92 - Nasopharyngeal squamous cell carcinoma sec.

Cat #: CH-PATH20 - INFLAMMATION AND INFECTION SLIDE SET - 30 slides



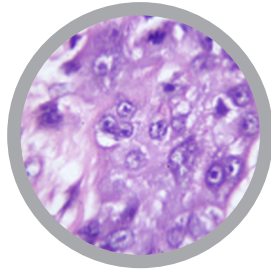
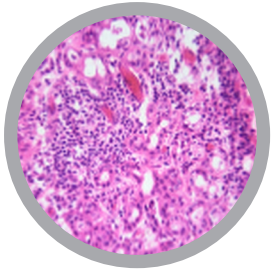
- 1 - Fibrinous pleurisy sec.
- 2 - Liver abscess sec.
- 3 - Chronic granulomatosis sec.
- 4 - Lung abscess sec.
- 5 - Chronic pyelonephritis sec.
- 6 - Human aortitis sec.
- 7 - Rheumatic endocarditis sec.
- 8 - Bacterial myocarditis sec.
- 9 - Bronchial pneumonia (lobular pneumonia) sec.
- 10 - Acute nephritis sec.
- 11 - Acute glomerulonephritis sec.
- 12 - Chronic glomerulonephritis sec.
- 13 - Chronic appendicitis sec.
- 14 - Ordinary gastritis sec.
- 15 - Acute hemorrhagic pancreatitis sec.
- 16 - Chronic cholecystitis sec.
- 17 - Inflammatory polyp sec.
- 18 - Semi-organized fibrous pericarditis sec.
- 19 - Brain abscess sec.
- 20 - Bacillary dysentery sec.
- 21 - Epidemic encephalitis sec.
- 22 - Encephalitis B sec.
- 23 - Foreign body granuloma sec.
- 24 - Human inflammatory cell of all kinds sec.
- 25 - Suppurative appendicitis sec.
- 26 - Marginal gingivitis
- 27 - Hyperplastic gingivitis
- 28 - Cheilitis granulomatosa
- 29 - Glossitis
- 30 - Chronic osteomyelitis of jaw

Cat #: CH-PATH21 - CYSTS SLIDE SET - 14 slides



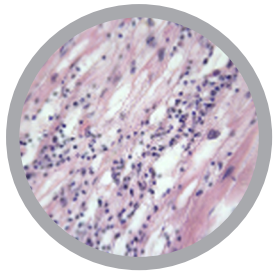
- 1 - Radicular cyst
- 2 - Branchial cyst sec.
- 3 - Periapical cyst
- 4 - Ovarian cyst sec.
- 5 - Thyroglossal cyst sec.
- 6 - Odontogenic cyst sec.
- 7 - Mucinous cyst sec.
- 8 - Calcifying odontogenic cyst (Gorlin cyst)
- 9 - Incisive Canal Cyst or NasoPalatine Duct Cyst (NPDC)
- 10 - Dentigerous cyst
- 11 - Dermoid cyst
- 12 - Lymphoepithelial cyst
- 13 - Mucocele or Mucous cyst
- 14 - Liver cyst formation sec.

For slide set prices see [page 31](#). If you are interested in purchasing individual slides [CLICK HERE](#)



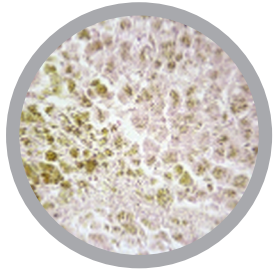
- 1 - Radicular cyst
- 2 - Odontogenic keratocyst sec.
- 3 - Chronic sialadnitis sec.
- 4 - Branchial cyst sec.
- 5 - Salivary gland pleomorphic adenoma sec.
- 6 - Early enamel caries grinding
- 7 - Acute serous pulpitis
- 8 - Chronic closed pulpitis
- 9 - Pulp calcification
- 10 - Periapical cyst
- 11 - Periapical abscess
- 12 - Marginal gingivitis
- 13 - Hyperplastic gingivitis
- 14 - Hereditary gingival fibromatosis
- 15 - Oral leukoplakia
- 16 - Oral lichen planus
- 17 - Chronic discoid lupus erythematosus
- 18 - Cheilitis granulomatosa
- 19 - Glossitis
- 20 - Chronic osteomyelitis of jaw
- 21 - Oral giant cell granuloma
- 22 - Osteoblastoma
- 23 - Osteoblast sarcoma
- 24 - Acinic cell carcinoma
- 25 - Adenoid cystic carcinoma
- 26 - Epithelial-myoepithelial carcinoma
- 27 - Nonspecific clear cell carcinoma
- 28 - Cystadenocarcinoma
- 29 - Complex odontoma
- 30 - Calcifying cystic odontogenic tumor
- 31 - Odontogenic fibroma
- 32 - Ossifying fibroma
- 33 - Cavernous hemangioma
- 34 - Giant cell epulis
- 35 - Oral squamous cell carcinoma
- 36 - Basic cell sample squamous cell carcinoma
- 37 - Thyroglossal cyst sec.
- 38 - Odontogenic cyst sec.
- 39 - Mucinous cyst sec.
- 40 - Adenoid cystic tumour
- 41 - Capillary hemangioma sec.
- 42 - Carcinoma of gingiva sec.
- 43 - Calcifying odontogenic cyst (Gorlin cyst)

- 44 - Pindborg tumor (calcifying epithelial odontogenic tumor)
- 45 - Ameloblastic fibroma
- 46 - Periapical granuloma
- 47 - Pemphigus
- 48 - Hyperkeratosis
- 49 - Incisive Canal Cyst or Nasopalatine Duct Cyst (NPDC)
- 50 - Ameloblastic fibro-odontoma
- 51 - Dentigerous cyst
- 52 - Dermoid cyst
- 53 - Lymphoepithelial cyst
- 54 - Chondrosarcoma
- 55 - Epulis fissuratum or Granuloma fissuratum
- 56 - Odontogenic myxoma
- 57 - Mucocele or Mucous cyst
- 58 - Malignant Fibrous Histiocytoma or Pleomorphic Undifferentiated sarcoma (PUS)
- 59 - Leiomyosarcoma (smooth muscle tumors of mesenchymal origin)
- 60 - Warthin's tumor
- 61 - Ameloblastoma basal cell
- 62 - Nevus intradermal
- 63 - Squamous Cell papilloma
- 64 - Ameloblastoma follicular
- 65 - Ameloblastoma plexiform
- 66 - Ameloblastoma acanthomatous
- 67 - Ameloblastoma granular
- 68 - Mucoepidermoid carcinoma



**Abnormal alterations of cells and tissues**

- 1 - Parenchymatous and fatty degeneration of liver
- 2 - Hemosiderosis of liver
- 3 - Glycogenosis of liver
- 4 - Pigmentary cirrhosis of liver
- 5 - Necrotic esophagitis
- 6 - Foreign body granuloma with hemosiderin and giant cells
- 7 - Tonsillitis
- 8 - Liver cirrhosis



**Injury of circulatory organs and blood-forming organs**

- 9 - Adiposis of heart
- 10 - Cardiac callosity
- 11 - Myocarditis chronica acute recidivans
- 12 - Organized venous thrombosis of muscle
- 13 - Infarct of spleen
- 14 - Chronic myeloid leukaemia of spleen
- 15 - Malarial melanemia of spleen

**Pathologic alterations of lung and liver, tuberculosis, pneumonia**

- 16 - Anthracosis of lung
- 17 - Hemorrhagic infarct of lung
- 18 - Influenzal pneumonia
- 19 - Croupous pneumonia
- 20 - Chronic pneumonia
- 21 - Necrotic (cheesy) pneumonia
- 22 - Miliary tuberculosis of lung
- 23 - Chronic tuberculous pulmonary cavity with bacteria
- 24 - Icterus hepatis

**Reaction of kidney after arteriosclerosis, disturbance of metabolism, and inflammation; colitis**

- 25 - Glomerular atrophy of kidney
- 26 - Amyloid degeneration of kidney
- 27 - Acute hemorrhagic nephritis
- 28 - Chronic glomerulonephritis
- 29 - Septic embolic nephritis
- 30 - Colitis dysenterica Shiga-Kruse

**Specific inflammations after infection with syphilis spirochaetes**

- 31 - Congenital syphilis of liver, spirochaetes silvered after Levaditi
- 32 - Congenital syphilis of liver (feuerstein liver), routine stained
- 33 - Gumma of testicle

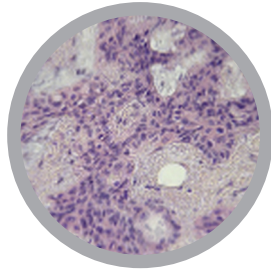
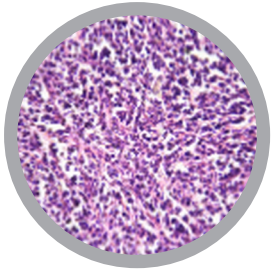
**Progressive alteration of injured tissues and organs (Hypertrophy and hyperplasia)**

- 34 - Atheroma of head
- 35 - Goitre of thyroid gland (Struma colloides)
- 36 - Undescended testicle showing hyperplasia of Leydig's cells
- 37 - Hypertrophy of prostate
- 38 - Giant cell sarcoma of maxilla

**Benignant and malignant tumours**

- 39 - Chondroma of pubic bone
- 40 - Myoma of uterus
- 41 - Fibroadenoma of breast
- 42 - Fibroepithelial mixed tumour of parotid gland
- 43 - Melanosarcoma of skin
- 44 - Spindle cell sarcoma
- 45 - Carcinoma cervicis uteri
- 46 - Sarcoma of testicle
- 47 - Cystadenoma papilliferum of ovary
- 48 - Gelatinous carcinoma of rectum
- 49 - Lymphosarcoma mediastini
- 50 - Metastatic carcinoma of liver

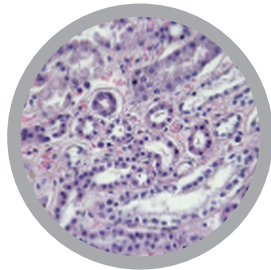
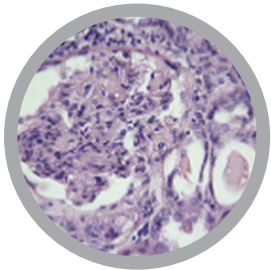
Cat #: JL-5HPM - HUMAN PATHOLOGY PART 1 SLIDE SET - 40 slides



- 1 - Miliary tuberculosis of lung
- 2 - Anthracosis of lung
- 3 - Croupous pneumonia
- 4 - Cyanotic induration of lung
- 5 - Chronic pneumonia
- 6 - Chronic pulmonary emphysema
- 7 - Necrotic (cheesy) pneumonia
- 8 - Influenzal pneumonia
- 9 - Myeloid sarcoma of spleen
- 10 - Malaria melanemia of spleen
- 11 - Myocarditis chronica acuta recidivans
- 12 - Amyloid degeneration of spleen
- 13 - Adiposis of heart
- 14 - Cardiac callosity
- 15 - Cor villosum
- 16 - Lymphosarcoma mediastini
- 17 - Myxoma mandibulae
- 18 - Erysipelas of spleen

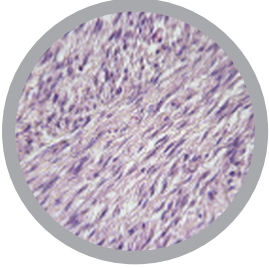
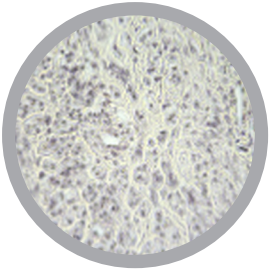
- 19 - Tuberculosis of lymph glands
- 20 - Scirrhus carcinoma of thyroid gland
- 21 - Fibroepithelial mixed tumour of parotid gland
- 22 - Carcinoma medullare glandulae
- 23 - Goitre of thyroid gland (Struma colloides)
- 24 - Miliary tuberculosis of liver
- 25 - Parenchymatous and fatty degeneration of liver
- 26 - Pigmentary cirrhosis of liver
- 27 - Hemosiderosis of liver
- 28 - Adenocarcinoma of colon
- 29 - Colitis dysenterica Shiga-Kruse
- 30 - Cirrhosis hepatitis luetica
- 31 - Carcinoma of liver, primary
- 32 - Cyanotic atrophy of liver (nutmeg liver)
- 33 - Hemorrhagic necrosis of liver (eclampsia)
- 34 - Amyloid degeneration of liver
- 35 - Brown atrophy of liver
- 36 - Lymphatic leukaemia of liver
- 37 - Icterus hepatitis
- 38 - Necrotic oesophagitis
- 39 - Parenchymatous degeneration of liver
- 40 - Cavernous hemangioma of liver

Cat #: JL-6HPM - HUMAN PATHOLOGY PART 2 SLIDE SET - 41 slides



- 1 - Liver metastasis from a melanoma of recti
- 2 - Malignant tumor of gall bladder
- 3 - Myoma of uterus
- 4 - Cardiac kidney
- 5 - Chronic glomerulonephritis
- 6 - Amyloid degeneration of kidney
- 7 - Carcinoma cervicis uteri
- 8 - Septic embolic nephritis
- 9 - Cystadenoma papilliferum of ovary
- 10 - Papilloma of uterine fundus
- 11 - Tuberculosis of kidney
- 12 - Undescended testicle with hyperplasia of Leydig's cells
- 13 - Parenchymatous degeneration of kidney
- 14 - Acute nephritis
- 15 - Acute hemorrhagic nephritis
- 16 - Glycogenosis of kidney
- 17 - Glomerular atrophy of kidney

- 18 - Adenoma of ovary
- 19 - Hypernephroma of kidney
- 20 - Malignant ovarian tumor
- 21 - Sarcoma of testicle
- 22 - Ovarian cysts
- 23 - Hypertrophy of the prostate
- 24 - Fibromyoma uteri
- 25 - Glioma cerebri
- 26 - Organized venous thrombosis of muscle
- 27 - Fibroadenoma of breast
- 28 - Spindle cell sarcoma
- 29 - Scirrhus carcinoma of breast
- 30 - Chondroma of pubic bone
- 31 - Giant cell sarcoma of maxilla
- 32 - Fibroadenoma intracanalicular of mamma
- 33 - Melanosarcoma of skin
- 34 - Sarcoma of thigh
- 35 - Fibroma of skin
- 36 - Myxofibroma of abdominal wall
- 37 - Zenker's degeneration of M. rectus abdominis (influenza)
- 38 - Cicatricial tissue
- 39 - Carcinoma solidum simplex of breast
- 40 - Fat embolism after fracture of the leg
- 41 - Abscessus lumbalis



- 1 - Tuberculosis of lung
- 2 - Tuberculous coal lung
- 3 - Carcinoma of lung
- 4 - Carcinoma of large intestine
- 5 - Carcinoma of stomach
- 6 - Carcinoma of squamous epithelium, skin
- 7 - Carcinoma of mammary gland
- 8 - Nephritis, sec. of kidney
- 9 - Adenoma of adrenal gland
- 10 - Arteriosclerosis
- 11 - Meningitis
- 12 - Leukaemia, blood smear
- 13 - Anaemia, blood smear
- 14 - Adrenal adenoma
- 15 - Struma nodosa of thyroid gland
- 16 - Inflammation of appendix
- 17 - Tonsillitis, sec. of palatine tonsil
- 18 - Ovary, cyst
- 19 - Ovary, teratoma, sec.
- 20 - Uterus, myoma, sec.
- 21 - Tuberculosis, liver, sec.
- 22 - Liver, fatty degeneration, sec.
- 23 - Liver, carcinoma, sec.
- 24 - Peritoneal metastasis of hepatoma, sec.
- 25 - Syphilis of kidney
- 26 - Cirrhosis of kidney
- 27 - Tuberculosis of kidney
- 28 - Icterus (jaundice), sec. of kidney
- 29 - Bleeding of kidney
- 30 - Pneumonia, sec. of lung
- 31 - Papilloma of urinary bladder
- 32 - Diphtheria, sec. of trachea
- 33 - Hypertrophy of prostate
- 34 - Thickening of intestine
- 35 - Bleeding of intestine caused by sublimate
- 36 - Fibroadenoma of mammary gland
- 37 - Icterus (jaundice) of testis
- 38 - Atrophy of testis
- 39 - Inhibition of spermatogenesis, testis (caused by hormone disorder)
- 40 - Carcinoma of praeputium
- 41 - Inflammation of gall bladder

For slide set prices see [page 31](#). If you are interested in purchasing individual slides [CLICK HERE](#)

# PRICE LIST

Valid from May 2017

Cat.#	Product Name	Ex. Tax	Inc. Tax
JL-1BPM	Pathogenic Bacteria - 25 slides	\$281.48	\$309.63
JL-2BPM	Bacteria, Basic Set - 25 slides	\$281.48	\$309.63
JL-3BPM	Bacteria, Large Set - 50 slides	\$526.52	\$579.17
JL-4BPM	General Parasitology, Large Set - 50 slides	\$618.46	\$680.31
JL-5BPM	General Parasitology, Short Set - 25 slides	\$320.74	\$352.81
JL-1HPM	Normal Human Histology, Basic Set - 40 slides	\$524.61	\$577.07
JL-2HPM	Human Histology, Large Set Part 1 - 50 slides	\$558.50	\$614.35
JL-3HPM	Human Histology, Large Set Part 2 - 50 slides	\$611.13	\$672.25
JL-4HPM	Human Pathology, Basic Set - 50 slides	\$541.18	\$595.30
JL-5HPM	Human Pathology Set Part 1 - 40 slides	\$457.23	\$502.95
JL-6HPM	Human Pathology Set Part 2 - 40 slides	\$457.23	\$502.95
JL-16HPM	Human Histology Complete Set - 100 slides	\$1173.74	\$1291.11
JL-17HPM	Human Pathology Supplementary Slide Set - 41 slides	\$486.55	\$535.20
CH-HIST1	Epithelial and Connective Slide Set - 11 slides	\$44.84	\$49.33
CH-HIST2	Muscular and Skeletal System Slide Set - 9 slides	\$48.05	\$52.85
CH-HIST3	Neurological System Slide Set - 9 slides	\$56.53	\$62.18
CH-HIST4	Cardiovascular & Respiratory System - 13 slides	\$49.90	\$54.89
CH-HIST5	Immune System - 10 slides	\$65.44	\$71.99
CH-HIST6	Digestive System - 19 slides	\$84.40	\$92.84
CH-HIST7	Urinary & Reproductive System - 21 slides	\$93.81	\$103.19
CH-HIST8	Integumentary System - 9 slides	\$45.82	\$50.40
CH-HIST9	Oral Histology - 39 slides	\$255.58	\$281.14
CH-HIST10	Human System Complete Set - 105 slides	\$430.92	\$474.01
CH-BACT1	Bacteria - Coccus Slide Set - 14 slides	\$61.08	\$67.19
CH-BACT2	Bacteria - Bacillus Slide Set - 29 slides	\$153.31	\$168.64
CH-BACT6	Bacteria Pathogens Slide Set - 29 slides	\$158.81	\$174.69
CH-BACT7	Complete Bacteriology Slide Set - 43 slides	\$212.98	\$234.28
CH-PAR1	Protozoa Slide Set - 29 slides	\$408.99	\$449.89
CH-PAR2	Platyhelminthes - Flatworms Slide Set - 49 slides	\$327.22	\$359.95
CH-PAR3	Nemathelminthes - Roundworms Slide Set - 25 slides	\$219.21	\$241.13
CH-PAR4	Ectoparasites Slide Set - 17 slides	\$132.82	\$146.11
CH-PAR5	Complete Parasitology Slide Set - 120 slides	\$1033.61	\$1136.97
CH-PATH1	Cardiac Diseases Slide Set - 16 slides	\$87.94	\$96.73
CH-PATH2	Vascular Diseases - 16 slides	\$83.91	\$92.30
CH-PATH3	Hematologic Diseases Slide Set - 14 slides	\$126.81	\$139.49
CH-PATH6	Digestive Diseases Slide Set - 27 slides	\$150.40	\$165.44
CH-PATH7	Diseases of the Liver Slide Set - 26 slides	\$139.05	\$152.96
CH-PATH8	Respiratory Diseases Slide Set - 38 slides	\$199.54	\$219.49
CH-PATH9	Pneumonias Slide Set - 8 slides	\$45.28	\$49.81
CH-PATH4	Urinary Diseases Slide Set - 27 slides	\$144.49	\$158.94
CH-PATH5	Reproductive Diseases Slide Set - 29 slides	\$152.96	\$168.26
CH-PATH10	Diseases of the Lymphatic System Slide Set - 19 slides	\$123.58	\$135.94
CH-PATH11	Endocrine Diseases Slide Set - 16 slides	\$90.38	\$99.42
CH-PATH12	Bone Diseases Slide Set - 13 slides	\$105.11	\$115.62
CH-PATH13	Diseases of the Nervous System Slide Set - 11 slides	\$63.97	\$70.36
CH-PATH14	Benign Tumours Slide Set - 27 slides	\$162.85	\$179.13



Cat.#	Product Name	Ex. Tax	Inc. Tax
CH-PATH15	Malignant Tumours Slide Set - 65 slides	\$357.34	\$393.08
CH-PATH16	Rare Tumours Slide Set - 27 slides	\$174.87	\$192.35
CH-PATH17	Carcinomas Slide Set - 35 slides	\$204.83	\$225.32
CH-PATH18	Adenocarcinomas Slide Set - 13 slides	\$71.11	\$78.22
CH-PATH19	Complete Oncology Slide Set - 92 slides	\$499.61	\$549.57
CH-PATH20	Inflammation and Infection Slide Set - 30 slides	\$196.68	\$216.35
CH-PATH21	Cysts - Slide Set - 14 slides	\$99.94	\$109.94
CH-PATH22	Oral Pathology Slide Set - 68 slides	\$540.22	\$594.25

As prices can change without notice, please visit our site to download the latest version of this PDF catalogue, and Price List.  
<http://www.msmedia.com.au/medical-slides>